



## E510 Access Point USB Module Quick Setup Guide

This Quick Setup Guide provides step-by-step instructions on how to field-install the Ruckus Wireless E510 access point (AP) USB Module (Ruckus Part #902-2003-0000). For detailed information on planning the installation, performing a site survey and operating the E510, refer to the *Ruckus Wireless Outdoor Access Point User Guide*, available at <https://support.ruckuswireless.com>.

**WARNING!** Only trained and qualified personnel should be allowed to install, replace, or service this equipment.

**WARNING!** Installation of this equipment must comply with local and national electrical codes.

**CAUTION!** Make sure that you form a 80mm - 130mm (3"-5") drip loop in any cable that is attached to the AP or the building. This will prevent water from running along the cable and entering the AP or the building where the cable terminates.

**CAUTION!** Be sure that grounding is available and that it meets local and national electrical codes. For additional lightning protection, use lightning rods and lightning arrestors.

**CAUTION!** Make sure that proper lightning surge protection precautions are taken according to local electrical code.

**WARNING!** Ruckus Wireless strongly recommends that you wear eye protection before mounting the AP.

### This Guide in Other Languages

- 请从以下网站获得该指南的简体中文版 <https://support.ruckuswireless.com>.
- Vous trouverez la version française de ce guide à l'adresse suivante <https://support.ruckuswireless.com>.
- このガイドの日本語版は <https://support.ruckuswireless.com> でご覧ください。

- 이 가이드의 한국어 버전은 웹 사이트 (<https://support.ruckuswireless.com>) 에서 확인하시기 바랍니다.
- Veja a versão em português (Brasil) deste guia em <https://support.ruckuswireless.com>.
- Puede ver la versión en español (América Latina) de esta guía en <https://support.ruckuswireless.com>.

### Before You Begin

Before deploying Ruckus Wireless products, please check for the latest software and the release documentation.

- Release Notes and other user documentation are available at <http://support.ruckuswireless.com/documents>.
- Software upgrades are available at <http://support.ruckuswireless.com/software>.
- Open source information is available at <http://opensource.ruckuswireless.com>.
- Software license and limited warranty information are available at <http://support.ruckuswireless.com/warranty>.

Before deploying your Ruckus Wireless Access Point, verify that all items listed in *Package Contents* are included in the package. If any item is damaged or missing, notify your authorized Ruckus Wireless sales representative. Also, make sure that you have the required hardware and tools.

### Package Contents - E510 USB Module

The E510 USB Module package includes all of the following:

- E510 USB Module
- This *Quick Setup Guide*

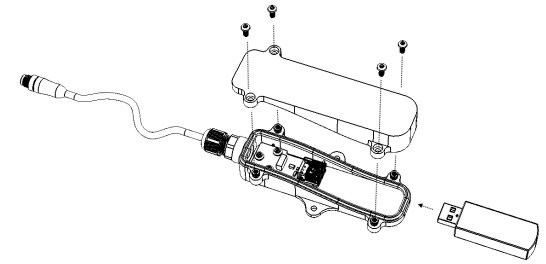
### Assembling the USB Module

1. Remove the four M2.5 Torx screws with flat/lock washers using a Torx screwdriver.
2. Insert the USB dongle into the USB Module.

**NOTE:** The maximum dimensions of the USB dongle that can be inserted are: 6 cm x 2 cm x 1.1 cm.

3. Replace the screws and tighten to 6 in-lbs. (0.678 Nm). Make sure the sealing gasket is properly installed to ensure proper IP67 waterproof protection.

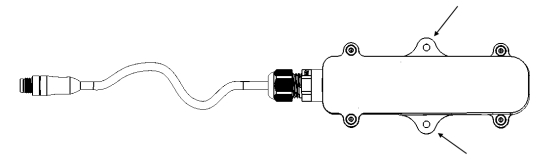
FIGURE 1 Assembling the USB Module



### Mounting the USB Module

Mount the USB Module to a flat surface using the two mounting flanges and customer-supplied mounting hardware.

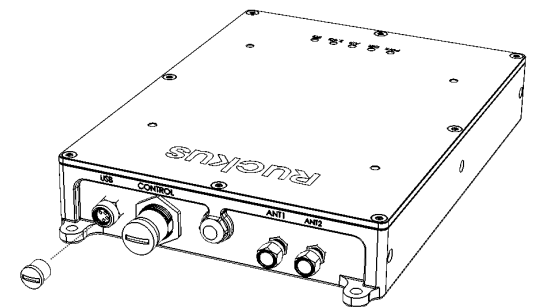
FIGURE 2 Flat surface mounting flanges



### Connecting the USB Module to the AP Module

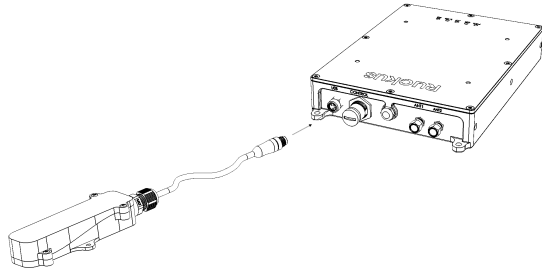
1. Remove the USB port cap on the AP Module using a flat screwdriver.

FIGURE 3 Remove the USB port cap



2. Connect the USB Module cable to the AP Module using the M8 connector.

**FIGURE 4** Connect the USB cable using the M8 connector



### **For More Information**

For information on how to configure and manage the AP, refer to the *Ruckus Wireless Outdoor Access Point User Guide*, available from <https://support.ruckuswireless.com>.