

**W O R K S T A T I O N P L A T F O R M S
& A C C E S S O R I E S**

Workstation Platforms & Accessories

Faceplates (Flush Mount)	342
Specialty Faceplates & Mounting Frames	348
Furniture Faceplates	351
Surface Mounted Boxes	355
Zone Boxes	360
Accessories	362
Multimedia Adapters & Couplers	366

Faceplates (Flush Mount)

LE Type Flush Mounted Faceplates

LE Type Faceplates are flush-mounted US standard plastic faceplates. They offer contoured edges for a contemporary appearance and are available in one, two, three, four and six port configurations. These plates will accept all CommScope UTP/FTP modular information outlets for voice and data, as well as most fiber optic adapters and couplers.

The LE style plates are also compatible with CommScope’s multimedia adapters and couplers. Mounting screws, label covers and label cards are included. Available in six colors.

Physical Specifications

Plastic: High-impact, flame retardant, UL-rated 94 V-0, thermoplastic

LE Type Flush Mounted Faceplates

Catalog Number	Description	Dimensions	Color	Material ID	
M10LE-003	1 Port	Height: 2.84" (7.2 cm)	Black	108332982	
M10LE-148	1 Port	Width: 4.81" (12.2 cm)	Almond	760106179	
M10LE-215	1 Port	Depth: 0.33" (0.84 cm)	Cream	108332990	
M10LE-246	1 Port		Ivory	108333006	
M10LE-262	1 Port		White	108333014	
M10LE-270	1 Port		Gray	108333022	
M12LE-003*	2 Port		Height: 2.84" (7.2 cm)	Black	108333030
M12LE-148*	2 Port		Width: 4.81" (12.2 cm)	Almond	760080812
M12LE-215*	2 Port	Depth: 0.33" (0.84 cm)	Cream	108333048	
M12LE-246*	2 Port		Ivory	108333055	
M12LE-262*	2 Port		White	108333063	
M12LE-270*	2 Port		Gray	108333071	
M13LE-003	3 Port		Height: 2.84" (7.2 cm)	Black	108333089
M13LE-148	3 Port		Width: 4.81" (12.2 cm)	Almond	760106195
M13LE-215	3 Port	Depth: 0.33" (0.84 cm)	Cream	108333097	
M13LE-246	3 Port		Ivory	108333105	
M13LE-262	3 Port		White	108333113	
M13LE-270	3 Port		Gray	108333121	
M14LE-003*	4 Port		Height: 2.84" (7.2 cm)	Black	108333139
M14LE-148*	4 Port		Width: 4.81" (12.2 cm)	Almond	760106203
M14LE-215*	4 Port	Depth: 0.33" (0.84 cm)	Cream	108333147	
M14LE-246*	4 Port		Ivory	108333154	
M14LE-262*	4 Port		White	108333162	
M14LE-270*	4 Port		Gray	108333170	
M16LE-003	6 Port		Height: 2.84" (7.2 cm)	Black	108333188
M16LE-148	6 Port		Width: 4.81" (12.2 cm)	Almond	760106211
M16LE-215	6 Port	Depth: 0.33" (0.84 cm)	Cream	108333196	
M16LE-246	6 Port		Ivory	108333204	
M16LE-262	6 Port		White	108333212	
M16LE-270	6 Port		Gray	108333220	

*Compatible with DYMO Labeling Solution



Uniprise
Copper
Fiber
Coax
Multi-Conductor
Enclosures
Workstation Platforms
Conduit
Packaging
Glossary/Index

Faceplates (Flush Mount)

L Type Flush Mounted Modular Faceplates

L Type Faceplates are flush-mounted US standard plastic faceplates. They are available in one, two, three, four, six and eight port outlet configurations.

These plates will accept all CommScope UTP/FTP modular information outlets for voice and data, as well as most fiber optic adapters and couplers .

The L Type plates are also compatible with CommScope’s multimedia adapters and couplers. Mounting screws, label covers and label cards are included.

They are available in four colors.

Physical Specifications

Plastic: High-impact, flame retardant, UL-rated 94 V-0, thermoplastic

L Type Flush Mounted Faceplates

Catalog Number	Description	Dimensions	Color	Material ID
M10L-003	1 Port	Height: 2.81" (7.1 cm)	Black	108258401
M10L-246	1 Port	Width: 4.81" (12.2 cm)	Ivory	108258419
M10L-262	1 Port	Depth: 0.29" (0.7 cm)	White	108258427
M10L-270	1 Port	(all L Type Faceplates)	Gray	108258435
M10LW-246*	1 Port Wall Mount Telephone	(3.28" lug spacing)	Ivory	108258450
M10LW-262*			White	108258468
M12L-003*	2 Port	Height: 2.81" (7.1 cm)	Black	108168485
M12L-246*	2 Port	Width: 4.81" (12.2 cm)	Ivory	108168477
M12L-262*	2 Port	Depth: 0.29" (0.7 cm)	White	108168469
M12L-270*	2 Port	(all L Type Faceplates)	Gray	108168451
M12AP-246	2 Port (Vertical Alignment)		Ivory	107276172
M12AP-262	2 Port (Vertical Alignment)		White	107276180
M13L-003	3 Port	Height: 2.81" (7.1 cm)	Black	108168527
M13L-246	3 Port	Width: 4.81" (12.2 cm)	Ivory	108168519
M13L-262	3 Port	Depth: 0.29" (0.7 cm)	White	108168501
M13L-270	3 Port	(all L Type Faceplates)	Gray	108168493
M14L-003*	4 Port		Black	108168568
M14L-246*	4 Port		Ivory	108168550
M14L-262*	4 Port		White	108168543
M14L-270*	4 Port		Gray	108168535
M16L-003	6 Port	Height: 2.81" (7.1 cm)	Black	108168600
M16L-246	6 Port	Width: 4.81" (12.2 cm)	Ivory	108168592
M16L-262	6 Port	Depth: 0.29" (0.7 cm)	White	108168584
M16L-270	6 Port	(all L Type Faceplates)	Gray	108168576
M28L-003*	8 Port (Double Gang)		Black	108685009
M28L-246*	8 Port (Double Gang)		Ivory	108685017
M28L-262*	8 Port (Double Gang)		White	108685025
M28L-270*	8 Port (Double Gang)		Gray	108685033

*Compatible with DYMO Labeling Solution



Uniprise

Copper

Fiber

Coax

Multi-Conductor

Enclosures

Workstation Platforms

Conduit

Packaging

Glossary/Index

Faceplates (Flush Mount)

FP Type Flush Mounted Faceplate System

The FP Type (Flexible and Tamper resistant) Faceplate systems provide front access to support future moves, adds and changes without removing the faceplate frame from the wall. The FP system will accommodate all CommScope UTP/STP Information outlets for voice and data, adapters for Video and audio, as well as most fiber optic adapters and couplers. CommScope offers a broad selection of multimedia adapters/couplers that are compatible with the any of the FP system adapter housings and frames. In addition the faceplate frames will accommodate specially designed CommScope S-video, VGA, RCA and DVI bezels also offered in this section. The FP system allows the user to customize each specific application according to the media types and interface required.

Faceplates (Flush Mount)

FP Type (Flexible) Faceplate Frames

There are 2 major components that comprise the FP (Flexible) system:

- (1) Select a faceplate frame: Single gang (M13) "OR" double gang (M26)
- (2) Select the needed adapter housing(s): (M30FP) Adapter housings are offered in "unloaded" single port, dual port, or blanks. Specially designed adapter housings are also available that come pre-populated with S-video, VGA, DVI or a 3 port RCA.

- Flexible Faceplate Frames include: Faceplate Frame, Mounting screws, label covers and labels.
- Adapter housings, Information Outlets, Adapters and couplers, icons, and related accessories are ordered separately.
- Frames and Adapter Housings are available in four color choices.

Physical Specifications

Plastic: High-impact, flame retardant, UL-rated 94 V-0, thermoplastic

FP Type (Flexible) Faceplate Frames

Catalog Number	Description	Dimensions	Color	Material ID
M13FP-003	Flexible Faceplate - Single Gang Frame	Height: 4.81" (12.2 cm)	Black	760010009
M13FP-246	Flexible Faceplate - Single Gang Frame	Width: 2.84" (7.2 cm)	Ivory	760010017
M13FP-262	Flexible Faceplate - Single Gang Frame	Depth: 0.64" (1.6 cm)	White	760010025
M13FP-270	Flexible Faceplate - Single Gang Frame		Gray	760010033
M26FP-003	Flexible Faceplate - Double Gang Frame	Height: 4.81" (12.2 cm)	Black	760008607
M26FP-246	Flexible Faceplate - Double Gang Frame	Width: 4.61" (11.7 cm)	Ivory	760008615
M26FP-262	Flexible Faceplate - Double Gang Frame	Depth: 0.67" (1.7 cm)	White	760008623
M26FP-270	Flexible Faceplate - Double Gang Frame		Gray	760008631



M26FP-262

M13FP-003

Uniprise
 Copper
 Fiber
 Coax
 Multi-Conductor
 Enclosures
 Workstation Platforms
 Conduit
 Packaging
 Glossary/Index

Faceplates (Flush Mount)

FP Type (Tamper Resistant) Faceplate Frames

The FP Type (Tamper Resistant) Faceplate is a front access system designed to provide security to the connection points being made at the work space location.

It provides a degree of protection from intentional or inadvertent removal of the connection points at the faceplate with a secured transparent cover that allows for easy visual inspection. The Tamper Resistant Faceplate Frames are constructed so that the housings and subsequent outlets or adapters are positioned at a 45 degree downward angle, providing bend radius protection and strain relief on the cables and connection points. Optional graphical and color coded icons provide a means for color-coding on the faceplate frame for easy service identification. Each kit includes all necessary hardware for mounting the frame, in addition to a std. Philips head screw and Torx head screw to secure the protective cover.

There are two major components that comprise the FP (Tamper Resistant) system:

- (1) Select a faceplate frame kit: Std. profile (M13FP-TR) "OR" Low profile (M13FP-TR1)
- (2) Select the needed adapter housing(s): (M30FP) Adapter housings are offered in "unloaded" single port, dual port, or blanks. Specially designed adapter housings are also available that come pre-populated with S-video, VGA, DVI or a 3 port RCA.

- Tamper Resistant Frame kits include: Faceplate frame, Protective cover, All necessary mounting and security screws, label covers and label cards
- Frame Kits are available in a std. profile or low profile in two color choices
- Adapter housings, Information Outlets, Adapters and couplers, Icons, and related accessories are ordered separately.

FP Type (Tamper Resistant) Faceplate Frames Kits & Covers

Catalog Number	Description	Color	Material ID
M13FP-TR-262	Faceplate Kit-Tamper Res. (Std.) (Single Gang)	White	760091231
M13FP-TR-246	Faceplate Kit-Tamper Res. (Std.) (Single Gang)	Ivory	760091249
M13FP-TR1-262	Faceplate Kit-Tamper Res. (Low Prof.) (Single Gang)	White	760091280
M13FP-TR1-246	Faceplate Kit-Tamper Res. (Low Prof.) (Single Gang)	Ivory	760091298
M13FP-TRC	Faceplate Cover-Tamper Res. (Std.) (Single Gang)	Clear	760091330
M13FP-TRC1	Faceplate Cover-Tamper Res. (Low Prof.) (Single Gang)	Clear	760091348



M13FP-TR-246
(Standard Profile)



M13FP-TR1-262
(Low Profile)

Faceplates (Flush Mount)

FP Type Adapter Housings

M30FP adapter housings are offered in empty 1 port, 2 port or solid blanks. Pre-populated adapter housings for audio and video are also available with S-video, VGA, and RCA adapters. M30FP adapter housing will accept all CommScope UTP/FTP modular information outlets for voice and data, as well as, most fiber optic adapters and couplers.

Note: In addition to the FP system frames, the M30FP Type adapter housings are also compatible with all 200 series Surface Mounted Boxes.

RCA and S-Video (SVHS) Adapters for the flexible faceplate are front access adapters that will accommodate the flush mount S-Video Adapter and the 3-Port RCA Adapter. These adapters will easily snap into the flexible faceplate. The RCA Adapter uses a 110 IDC (Insulation Displacement Contact) block to directly terminate the 4-pair building wiring. RCA outlets are used for connecting audio and video appliances to 24 AWG UTP wiring.

The S-Video Adapter uses a 110 IDC block to directly terminate to 4-pair building wiring. The S-Video or Super VHS (SVHS) Modular Adapter provides baseband video connectivity to 24 AWG UTP wiring. These outlets provide point-to-point transmission of analog baseband National Television System Committee (NTSC)/Phase-Alteration Line (PAL)/SECAM S-Video signals.

FP Type Adapter Housings

Catalog Number	Description	Dimensions	Color	Material ID
M30FP-1RJ45-246	Single Port Adapter	Height: 4.81" (12.2 cm)	Ivory	760009431
M30FP-1RJ45-262	Single Port Adapter	Width: 4.61" (11.7 cm)	White	760009449
M30FP-1RJ45-270	Single Port Adapter	Depth: 0.67" (1.7 cm)	Gray	760009456
M30FP-2RJ45-003	Double Port Adapter		Black	760008649
M30FP-2RJ45-246	Double Port Adapter		Ivory	760008656
M30FP-2RJ45-262	Double Port Adapter		White	760008664
M30FP-2RJ45-270	Double Port Adapter		Gray	760008672
M30FP-BLANK-003	Blank Adapter		Black	760009464
M30FP-BLANK-246	Blank Adapter		Ivory	760009472
M30FP-BLANK-262	Blank Adapter		White	760009480
M30FP-BLANK-270	Blank Adapter		Gray	760009498
M30FP-SVHS-110-003	Flush Mount S-VHS Adapter	Height: 4.81" (12.2 cm)	Black	760013094
M30FP-SVHS-110-246	Flush Mount S-VHS Adapter	Width: 4.61" (11.7 cm)	Ivory	760013102
M30FP-SVHS-110-262	Flush Mount S-VHS Adapter	Depth: 0.67" (1.7 cm)	White	760013110
M30FP-SVHS-110-270	Flush Mount S-VHS Adapter		Gray	760013128
M30FP-3RCA-110-003	3-Port RCA Adapter		Black	760017541
M30FP-3RCA-110-246	3-Port RCA Adapter		Ivory	760017558
M30FP-3RCA-110-262	3-Port RCA Adapter		White	760017566
M30FP-3RCA-110-270	3-Port RCA Adapter		Gray	760017574
M30FP-VGA-PT-262	M30FP VGA Adapter		White	760028720
M30FP-VGA-PT-270	M30FP VGA Adapter		Gray	760028738
M30FP-VGA-PT-003	M30FP VGA Adapter		Black	760028704
M30FP-VGA-PT-246	M30FP VGA Adapter		Ivory	760028712
M30FP-DVI-DVI-262	M30FP DVI Adapter	Height: 2.01" (5.1 cm)	White	760106294
M30FP-DVI-DVI-270	M30FP DVI Adapter	Width: 0.92" (2.3 cm)	Gray	760106310
M30FP-DVI-DVI-003	M30FP DVI Adapter	Depth: 0.69" (1.8 cm)	Black	760106328
M30FP-DVI-DVI-246	M30FP DVI Adapter		Ivory	760106302



M30FP-1RJ45-246



M30FP-2RJ45-246



M30FP-BLANK-246



M30FP-SVHS-110



M30FP-RCA-110



M30FP-VGA-PT-003

Uniprise
Copper
Fiber
Coax
Multi-Conductor
Enclosures
Workstation Platforms
Conduit
Packaging
Glossary/Index

Faceplates (Flush Mount)

SP-L Type (Stainless Steel - Labeled) Faceplates

SP-L Type Faceplates are flush-mounted US standard stainless steel faceplates that provide a labeling feature. They are available in one, two, three, four, and six port outlet configurations.

These plates will accept all CommScope UTP/FTP modular information outlets for voice and data, as well as a select group of fiber optic adapters and couplers .

The SP-L Type plates are also compatible with CommScope’s multimedia adapters / couplers. Mounting screws, label covers and label cards are included.



M13SP-L



M16SP-L

SP-L Type Flush Mounted Faceplates

Catalog Number	Description	Dimensions	Material ID
M11SP-L	1 Port with label field	Height: 4.50" (11.2 cm)	760072074
M12SP-L	2 Port with label field	Width: 2.75" (7.0 cm)	760072181
M13SP-L	3 Port with label field	Depth: 0.16" (0.4 cm)	760072199
M14SP-L	4 Port with label field		760072207
M16SP-L	6 Port with label field		760072215
M24SP-L	4 Port with label field (Double gang)	Height: 4.50" (11.2 cm) Width: 4.60" (11.7 cm)	760100875
M28SP-L	6 Port with label field (Double gang)	Depth: 0.16" (0.4 cm)	760100883

Faceplates (Flush Mount)

SP Type (Stainless Steel) Faceplates

SP Type Faceplates are flush-mounted US standard stainless steel faceplates. They are available in one, two, three, four and six port outlet configurations.

These plates will accept all CommScope UTP/FTP modular information outlets for voice and data, as well as a select group of fiber optic adapters and couplers .

The SP style plates are also compatible with CommScope’s multimedia adapters / couplers. Mounting screws are included.



M14SP



M10LW

SP Type Flush Mounted Faceplates

Catalog Number	Description	Dimensions	Material ID
M11SP	1 Port	Height: 4.50" (11.2 cm)	760100867
M12SP	2 Port	Width: 2.75" (7.0 cm)	108615188
M13SP	3 Port	Depth: 0.16" (0.4 cm)	108615196
M14SP	4 Port		108615204
M16SP	6 Port		108615212
M10LW	1 port wall phone plate (3.28" lug spacing)		760117572
M10LW4	Stainless Phone Mount 4" lug spacing		760100891

Uniprise

Copper

Fiber

Coax

Multi-Conductor

Enclosures

Workstation Platforms

Conduit

Packaging

Glossary/Index

Specialty Faceplates & Mounting Frames

MMFP Type Flush Mounted Multimedia Faceplate

The M10MMFP faceplate provides the opportunity to deploy copper and fiber media to the workstation for new and existing installations. The product enables you to fasten a flush mount faceplate (i.e. M12L, M14L, M12LE, M14LE, etc.) to the front of the unit—for installation of up to 6 copper CommScope information outlets and provides alternatives for fiber connectors installed vertically at the base of the product. It may be configured with ST, SC or LC adapters in various densities.

Adapter plates are provided for use with the SC duplex, LC duplex or the high-density modular adapter strips available for ST, SC and LC connectors. The plates can be installed either right at the base (exposed) or recessed in unit, providing additional protection for the fibers. Additionally, the fiber adapter strips provide high-density capability for customer applications.

The M10MMFP incorporates fiber slack storage to manage fiber termination. The M10MMFP also features either rear (4) or side (2) entry ports for cabling, providing flexibility for either wall-mount or raceway installs.

The attractive cover snaps onto the base, providing protection for the fiber connections. The cover also provides labeling features such as a paper label for circuit identification and plastic icon strips (in 9 colors). In addition, the cover may be attached to the base with the screws, affording tamper resistance.

The M10MMFP Multimedia Faceplate includes: 1 multimedia unit (cover and base); 3 Fiber Adapter Plates- SC Adapter Plate, LC Adapter Plate and Plate for SC, ST or LC adapter strips; 1-1/4 in truss head screws; K35 by 12 mm pan head Phillips PT® screws; label; clear plastic label cover; installation instructions; plastic icon strips in 9 colors (gray, blue, yellow, orange, red, white, brown and purple).

MMFP Type Flush Mounted Multimedia Faceplate

Catalog Number	Description	Dimensions	Color	Material ID
10MMFP-003	Multimedia	Height: 4.50" (11.2 cm)	Black	108502287
M10MMFP-246	Multimedia	Width: 2.75" (7.0 cm)	Ivory	108502303
M10MMFP-262	Multimedia	Depth: 0.16" (0.4 cm)	White	108502329
M10MMFP-270	Multimedia		Gray	108502337



M10MMFP-246

Uniprise

Copper

Fiber

Coax

Multi-Conductor

Enclosures

Workstation Platforms

Conduit

Packaging

Glossary/Index

Specialty Faceplates & Mounting Frames

Mounting Frames

The M105, M106 and M108 Modular Mounting Frames are flush mounted multi-outlet modular mounting frames designed for use with all CommScope modular information outlets. The 105 and 106 series mount behind a standard 106 NEMA faceplate. 108 series frames mount behind standard Decora electrical faceplates.

Physical Specifications

Plastic: High-impact, flame retardant, UL-rated 94 V-0, thermoplastic

Mounting Frames

Model	Ports	Dimensions	Color	Material ID
M105FR1-246	1 Port	Height: 4.10" (10.4 cm) Width: 1.75" (4.4 cm) Depth: 0.50" (1.3 cm)		106622160
M105FR1-262	1 Port		White	106622178
M105FR1-270	1 Port			106688401
M106FR2-148	2 Port			760101287
M106FR2-003	2 Port			106628852
M106FR2-246	2 Port			106622210
M106FR2-262	2 Port		White	106622251
M106FR2-270	2 Port		106688393	
M106FR4-003	4 Port	Height: 2.81" (7.1 cm) Width: 4.81" (12.2 cm) Depth: 0.29" (0.7 cm)		106627763
M106FR4-246	4 Port			106622277
M106FR4-262	4 Port		White	106622285
M106FR4-270	4 Port			106688385
M108FR1-148	1 Port*		Height: 4.16" (10.0 cm) Width: 1.40" (3.6 cm) Depth: 0.29" (0.7 cm)	
M108FR1-003	1 Port*			760092163
M108FR1-246	1 Port*			760092171
M108FR1-262	1 Port*	White		760092189
M108FR1-270	1 Port*			760092197
M108FR3-148	3 Port	Height: 3.93" (10.0 cm) Width: 1.40" (3.6 cm) Depth: 0.29" (0.7 cm)		760074229
M108FR3-003	3 Port			108265430
M108FR3-246	3 Port			108265448
M108FR3-262	3 Port		White	108265455
M108FR3-270	3 Port			108265463

* Denotes Decora Mounting Frame



M106FR4-003

Specialty Faceplates & Mounting Frames

Mounting Frame (Extron Cable Cubby®)

The CommScope 6 Port Adapter Plate for Extron Enclosure Applications allows the user to integrate any CommScope information outlet, adapter or coupler into an Extron Cable Cubby type enclosure. The metal adapter plate features a snap-in plastic bezel and four K-Lock nuts to secure the unit inside the enclosures.

Using the CommScope adapter plates in unison with the Extron Cable Cubby extends the choices of audio, video, and data connections to the user work space in an enclosed and very aesthetically pleasing manner. Typical environments that benefit from this combination of products would range from commercial office or educational facilities, as well as high-end residential and retail spaces.



MFR6-EXT-003

Catalog Number	Description	Material ID
MFR6-EXT-003	6 Port Adapter Plate for Extron Enclosure Applications	760077859

- Uniprise
- Copper
- Fiber
- Coax
- Multi-Conductor
- Enclosures
- Workstation Platforms
- Conduit
- Packaging
- Glossary/Index

Specialty Faceplates & Mounting Frames

MMO Type Flush Mounted (Angled) Faceplate

This 4-Port faceplate is designed to mount on a wall surface and will fit any standard National Electrical Manufacturers Association (NEMA) electrical box. The flush mounted faceplate has 45 degree angular ports for fiber and copper connectors and has a protective angled hood. The hinged base of the faceplate allows changes and maintenance to occur without reinstalling the faceplate. The fiber organizer spool bend-radius provides control and storage for fiber slack.

This faceplate can be used in the following environments:

- In an ALL COPPER environment, the 4-Port Flush Mount Faceplate will support up to four CommScope information outlets, four LC mounting modules, or up to two CommScope information outlets or adapters. When fiber is introduced into the application, the number of ports available for connectors is reduced by one
- In an ALL FIBER environment, the M14MMO will support two simplex ST or SC connectors, four LC connectors, or two duplex SC connectors
- In an integrated FIBER/COPPER environment, the 4-Port Flush Mount Faceplate will support one CommScope information outlet and two simplex SC or ST connectors, or one CommScope information outlet and one duplex SC connector

Physical Specifications

Plastic: High-impact, flame retardant, UL-rated 94 V-0, thermoplastic

MMO Type Flush Mounted (Angled) Faceplate

Catalog Number	Description	Dimensions	Color	Material ID
M14MMO-003	4 Port	Height: 5.69" (14.5 cm)	Black	107655169
M14MMO-246	4 Port	Width: 3.28" (8.30 cm)	Ivory	107655177
M14MMO-262	4 Port	Faceplate Depth: 1.29" (3.3 cm)	White	107655185
M14MMO-270	4 Port	Hood & Faceplate Depth: 2.77" (7.0 cm)	Gray	107655193
		Hood, Faceplate & Spool Depth: 5.30" (13.5 cm)		



M14MMO-246

Uniprise

Copper

Fiber

Coax

Multi-Conductor

Enclosures

Workstation Platforms

Conduit

Packaging

Glossary/Index

Furniture Faceplates

M4CA Type (Adjustable) Furniture Faceplate

M4CA faceplate is designed for modular furniture applications requiring either fiber and/or copper connectivity. The M4CA will accommodate up to 4 CommScope information outlets or adapters. The M4CA will also accommodate 4 fiber modular telecommunications outlets such as the “LC couplings and jumpers for modular furniture” within TIA standard cavity depth of 1.2 inch minimum. The angle mount fiber jumper assemblies may also be used with this faceplate.

Modular office furniture manufacturers have used a wide range of panel openings for their data and voice outlets. The M4CA will adjust to fit many of these. It may be mounted on any flat surface with a material thickness of 0.025 in to 0.125 in (0.63 mm to 3.18 mm). It may be easily installed in any rectangular opening size ranging from 1.7 in high by 2.792 in wide (4.32 cm x 7.09 cm) to 2.375 in high by 4.125 in wide (6.03 cm x 10.48 cm).

The surface finish is the same as that used on the LE series faceplates. Each M4CA kit includes frame, cover, latch bars (shipped attached to the frame) and a paper label that may be used for identification of each port, along with a protective clear plastic label cover.



M4CA-262

Physical Specifications

Plastic: High-impact, flame retardant, UL-rated 94 V-0, thermoplastic

M4CA Type (Adjustable) Furniture Faceplate

Catalog Number	Description	Dimensions	Color	Material ID
M4CA-003	4 Port	Height: 2.98" (7.6 cm)	Black	700189046
M4CA-262	4 Port	Width: 3.28" (8.03 cm)	White	700191588
M4CA-246	4 Port	Depth: 0.5" (1.3 cm)	Ivory	700191570
M4CA-270	4 Port		Gray	700191596

*Compatible with DYMO Labeling Solution

Furniture Faceplates

M26C Type Furniture Faceplate

The M26C Modular Furniture Six Port Faceplate is a flush mounted faceplate designed to snap into modular furniture raceway covers. The M26C holds up to six CommScope information outlets or adapters. Both sides of the faceplate are numbered for easy installation and maintenance identification. The M20AP dust cover/blank can be used to protect unused outlets and cover unused faceplate openings. Fits modular furniture knock-out size 1.374 in (3.49 cm) high x 5.251 in (13.34 cm) wide.

Physical Specifications

Plastic: High-impact, flame retardant, UL-rated 94 V-0, thermoplastic

M26C Type Furniture Faceplate

Catalog Number	Description	Dimensions	Color	Material ID
M26C-246	6 Port	Height: 1.9" (4.8 cm) Width: 5.6" (14.2 cm) Depth: 0.5" (1.3 cm)	Ivory	107167496

- Uniprise
- Copper
- Fiber
- Coax
- Multi-Conductor
- Enclosures
- Workstation Platforms
- Conduit
- Packaging
- Glossary/Index

Furniture Faceplates

M13C/M13CLS Type Furniture Faceplates

The M13C and M13CLS Modular Furniture Triplex Outlet Faceplates are flush mounted triplex modular faceplates designed to fit modular furniture raceway covers for the following SteelCase furniture lines: (E)9000, Segment (with correct bezel), Answer, Montage, Avenir, Elective Elements and Contex. The M13C holds up to three CommScope information outlets and has numbering on both sides of the faceplate for installation and maintenance identification. The M13C Faceplate is used in an opening size of 1.38 inches (35.1 mm) in height and 2.71 inches (68.8 mm) in width (dimensions are +/-0.01 in).

The M13CLS Faceplate is part of the LazrSPEED Solution and it holds modules that snap in vertically and can also be angled. The M13CLS Faceplate is used in an opening size of 1.375 in +/- 0.025 in (34.93 mm +/- 0.64 mm) in height and 2.700 in +/- 0.050 in (68.58 mm +/-1.27 mm) in width. This 1.38H x 2.71W dimension is part of the TIA569 spec for modular furniture.

Physical Specifications

Plastic: High-impact, flame retardant, UL-rated 94 V-0, thermoplastic

M13C/M13CLS Type Furniture Faceplates

Catalog Number	Description	Dimensions	Color	Material ID
M13C-003	3 Port	Height: 1.84" (4.7 cm)	Black	106650864
M13C-246	3 Port	Width: 3.13" (7.9 cm)	Ivory	106650880
M13C-262	3 Port	Depth: 0.29" (0.7 cm)	White	106650898
M13C-270	3 Port		Gray	106701154
M13CLS-003*	3 Port		Black	108564709
M13CLS-246*	3 Port		Ivory	108564675
M13CLS-262*	3 Port		White	108564683
M13CLS-270*	3 Port		Gray	108564691

*Compatible with DYMO Labeling Solution



Furniture Faceplates

M13HM Type Furniture Faceplate

The M13HM faceplate is designed to fit to the data communications opening in the Herman-Miller Action Office System series of modular furniture.

The M13HM will accommodate three CommScope information outlets or adapters. Above the port openings is space for a paper label insert with a clear plastic label holder (included). Mounting clips are molded within the M13HM faceplate. No screws required for mounting and securing the faceplate to the opening.

M13HM Type Furniture Faceplate

Catalog Number	Description	Dimensions	Color	Material ID
M13HM-003	3 Port	Height: 2.13" (5.5 cm)	Black	760045039
M13HM-246	3 Port	Width: 3.5" (8.8 cm)	Ivory	760045047
M13HM-262	3 Port	Depth: 0.25" (0.65 cm)	White	760045054
M13HM-270	3 Port		Gray	760045062

Uniprise
Copper
Fiber
Coax
Multi-Conductor
Enclosures
Workstation Platforms
Conduit
Packaging
Glossary/Index

Furniture Faceplates

M14C Type Furniture Faceplates

The M14 Series Modular Furniture 4 port faceplates hold up to four CommScope information outlets or M81-Series Mounting Modules. Both sides of the faceplate are numbered for easy installation and maintenance identification.

The M14C Faceplate is a flush mounted modular faceplate designed to fit the Knoll, Inc. line of modular furniture raceway covers. Packaged with two color coordinated M20AP dust cover/blanks to cover unused ports. The M14C Faceplate is used in an opening size of 1.609 inches in height and 3.358 inches in width (dimensions are +/- .01 inch).

The M14CE faceplate is designed to fit SteelCase modular furniture and is used in an opening size of 1.38 in (3.51 cm) in height and 2.71 in (6.88 cm) in width.

The M14CH is a 4-Port flush mounted modular faceplate. The M14CH Faceplate is used in an opening of 1.750 inches in height and 2.832 inches in width (dimensions are +/- 0.005 in.).

Physical Specifications

Plastic: High-impact, flame retardant, UL-rated 94 V-0, thermoplastic

M14C Type Furniture Faceplates

Catalog Number	Description	Dimensions	Color	Material ID
M14C-003	4 Port	Height: 2.11" (5.4 cm)	Black	106650849
M14C-262	4 Port	Width: 4.07" (10.3 cm)	White	760071258
M14C-270	4 Port	Depth: 0.53" (1.3 cm)	Gray	107167462
M14C-148	4 Port		Almond	107167488
M14CE-003	4 Port		Height: 2.16" (5.5 cm)	Black
M14CE-246	4 Port	Width: 4.07" (10.3 cm)	Ivory	108216144
M14CE-262	4 Port	Depth: 1.27" (3.2 cm)	White	108216128
M14CE-270	4 Port		Gray	108216136
M14CH-003	4 Port		Height: 2.0" (5.1 cm)	Black
M14CH-246	4 Port	Width: 3.13" (7.9 cm)	Ivory	108406422
M14CH-262	4 Port		White	108406430
M14CH-270	4 Port		Gray	108406448



M14C-003



M14CE-262



M14CH-246

*Compatible with DYMO Labeling Solution

Furniture Faceplates

M14CE-E Modular Furniture Faceplates

The M14CE-E consists of a faceplate frame, 4-port faceplate label and label cover. It is designed to mount to a TIA-569 specified modular furniture opening of 2.71 inches (6.9 cm) inches wide by 1.38 inches (3.5 cm) high. The 4 port faceplate snaps easily into the frame.

The M14CE-E consists of two versions. Both versions have modified frames to allow easier routing and termination of cable diameters up to .315 inches (0.8 cm). The M14CE-E .08 fits into wall thickness up to .08 inches (2 cm) and the M14CE-E .125 fits into wall thickness up to .125 inches (3.2 cm).

M14CE-E Modular Furniture Faceplates

Catalog Number	Ports	Dimensions	Color	Material ID
M14CE-E -262 Faceplate 0.08 Snap	4 Port	Height: 2.20" (5.8 cm) Width: 4.09" (10.4 cm) Depth: 1.596" (4.1 cm)	White	760118232
M14CE-E -003 Faceplate 0.08 Snap	4 Port		Black	760118240
M14CE-E -246 Faceplate 0.08 Snap	4 Port		Ivory	760118257
M14CE-E -270 Faceplate 0.08 Snap	4 Port		Gray	760115265
M14CE-E -148 Faceplate 0.08 Snap	4 Port		Almond	760121756
M14CE-E -262 Faceplate 0.125 Snap	4 Port		White	760118273
M14CE-E -003 Faceplate 0.125 Snap	4 Port		Black	760118281
M14CE-E -246 Faceplate 0.125 Snap	4 Port		Ivory	760118299
M14CE-E -270 Faceplate 0.125 Snap	4 Port		Gray	760118307
M14CE-E -148 Faceplate 0.125 Snap	4 Port		Almond	760121764



M14CE-E-246

Furniture Faceplates

M30MC Mounting Collar

The M30MC Mounting Collar is designed to fit into a rectangular opening. The width of the opening will always be 0.763 inch (19.38 mm). However, the height of the opening is variable based on the thickness of the material into which the collar is pressed. The material thickness is restricted to the range, 0.025 inch to 0.125 inch (0.64 mm to 3.17 mm).

The M30MC collar supports a single voice or data outlet or any M81 series adapter or coupler.

Physical Specifications

Plastic: High-impact, flame retardant, UL-rated 94 V-0, thermoplastic

M30MC Mounting Collar

Catalog Number	Dimensions	Color	Material ID
M30MC-003	Height: 1.00" (2.5 cm)	Black	106664154
M30MC-246	Width: 1.03" (2.6 cm)	Ivory	106664139
M30MC-262	Depth: 0.46" (1.2 cm)	White	106664147
M30MC-270		Gray	106697089



M30MC-246

Furniture Faceplates

M30CC Mounting Collar

The M30CC Circular Collar is a plastic circular collar designed to support CommScope information outlets. The M30CC can be used in furniture such as a desk or cabinet, on a flat wall panel, or on a flat metal panel. The supporting panel or wall structure must be between 0.04 in. and 0.13 in (0.1 cm and 0.32 cm) in thickness, inclusively.

The M30CC collar supports a single voice or data outlet or any M81series adapter or coupler.

Physical Specifications

Plastic: High-impact, flame retardant, UL-rated 94 V-0, thermoplastic

M30CC Mounting Collar

Catalog Number	Dimensions	Color	Material ID
M30CC-246	Outside Diameter: 1.60" (4.1 cm) Depth: 0.50" (1.3 cm)	Ivory	106986110



M30CC-246

Plate Thickness (inches)	Opening (inches)	Plate Thickness (inches)	Opening (inches)
0.025	0.828	0.080	0.884
0.030	0.833	0.085	0.889
0.035	0.838	0.090	0.894
0.040	0.843	0.095	0.900
0.045	0.849	0.100	0.905
0.050	0.854	0.105	0.910
0.055	0.859	0.110	0.915
0.060	0.864	0.115	0.920
0.065	0.869	0.120	0.925
0.070	0.874	0.125	0.930
0.075	0.879		

* Chart provides recommended openings for bare metal only (manufacturer should consider coating/plating thickness)

Uniprise
Copper
Fiber
Coax
Multi-Conductor
Enclosures
Workstation Platforms
Conduit
Packaging
Glossary/Index

Surface Mounted Boxes

M40 Surface Mounted Box and Accessories

The M40 is a surface-mounted plastic enclosure designed to support a copper/fiber intergrated environment, an all copper environment or an all fiber environment.

The M40 design makes it versatile by utilizing removable panel inserts allowing termination of copper, fiber or composite cables. Panels are available to hold CommScope information outlets or adapters, ST, SC and LC adapters.

The M40 outlet comes equipped with one M40RJ4A and one M40ST8 panel. Other panels and accessories must be ordered separately.

Physical Specifications

Plastic: High-impact, flame retardant, UL-rated 94 V-0, thermoplastic

M40 Surface Mounted Box and Accessories

Catalog Number	Description	Dimensions	Color	Material ID
M40A1-B-262	Surface Box with M40RJ4A and M40ST8	Height: 6.88" (17.5 cm)	White	107992927
M40ST8-B-262	Insert Panel Holds 8 ST Couplings	Width: 5.79" (14.7 cm)	White	107239485
M40DSC4-B-262	Insert Panel Holds 4 Duplex SC Couplings	Depth: 1.70" (4.3 cm)	White	107239493
M40R-J2-246	Insert Panel Holds 4 RJ45 Jacks		White	106669278
M40RJ4A-262	Insert Panel Holds 4 RJ45 Jacks, 4 M81 Mounting Modules		White	108004268
M40ST4-262	Insert Panel Holds 4 ST Couplings		White	107800658



M40A1-B-262

Surface Mounted Boxes

M101 Type Surface Mounted Box

The M101SMB Modular Surface-Mount Box is designed for use with one modular information outlet (copper or fiber). It can be mounted on a flat surface using the screws or the double-sided adhesive tape provided. This unit will accept 22-26 gauge cable.

Physical Specifications

Plastic: High-impact, flame retardant, UL-rated 94 V-0, thermoplastic

M101 Type Surface Mount Box

Catalog Number	Dimensions	Color	Material ID
M101SMB-B-003	Height: 2.26" (5.7 cm)	Black	107983983
M101SMB-B-246	Width: 1.22" (3.1 cm)	Ivory	107984007
M101SMB-B-262	Depth: 1.29" (3.3 cm)	White	107984015
M101SMB-B-270		Gray	107984007



M101SMB-B-270

Surface Mounted Boxes

M102 Type Surface Mounted Box

The M102SMB Modular Surface-Mount Box is a modular surface-mounted duplex box designed for use with one or two CommScope modular information outlets (copper and/or fiber). It can be mounted on a flat surface using the screws or the double-sided adhesive tape provided. This unit will accept 22-26 gauge cable.

Physical Specifications

Plastic: High-impact, flame retardant, UL-rated 94 V-0, thermoplastic

M102 Type Surface Mount Box

Catalog Number	Dimensions	Color	Material ID
M102SMB-B-003	Height: 2.26" (5.7 cm)	Black	107984031
M102SMB-B-246	Width: 2.06" (5.2 cm)	Ivory	107984049
M102SMB-B-262	Depth: 1.29" (3.3 cm)	White	107984056
M102SMB-B-270		Gray	107984064



M102SMB-B-262

Uniprise

Copper

Fiber

Coax

Multi-Conductor

Enclosures

Workstation Platforms

Conduit

Packaging

Glossary/Index

Surface Mounted Boxes

M104 Type Surface Mount Box

The M104SMB Modular Surface-Mount Box is a modular multimedia surface-mounted 4 port box designed for use with one to four modular jacks (copper and/or fiber). The M104SMB can be mounted on a flat surface using the screws or the double-sided adhesive tape provided. One mounting magnet kit is required for mounting on steel walls or furniture.

The outlet openings are numbered on both the base and cover for installation and maintenance identification. The M104SMB is packaged with three color-coordinated M20AP Dust Covers/Blanks to cover any unused jacks. This unit will accept 22-26 gauge cable.

Physical Specifications

Plastic: High-impact, flame retardant, UL-rated 94 V-0, thermoplastic

M104 Type Surface Mount Box

Catalog Number	Dimensions	Color	Material ID
M104SMB-A-003	Height: 2.83" (7.2 cm)	Black	107952475
M104SMB-A-246	Width: 3.92" (10.0 cm)	Ivory	107952442
M104SMB-A-262	Depth: 1.20" (3.0 cm)	White	107952459
M104SMB-A-270		Gray	107952467

Surface Mounted Boxes

M106 Type Surface Mount Box

The M106SMB Modular Surface-Mount Box is a modular multimedia surface-mounted 6 port box designed for use with one to six modular jacks (copper and/or fiber). It is used to terminate 25-pair Category 5 cable at the transition point or to terminate 4-pair wiring in the work location subsystem or to terminate 4 strands of fiber. The M106SMB can be mounted on a flat horizontal surface or on a wall using two mounting screws, double-sided sticky tape or magnets.

The M106SMB has a storage device/area for storing unterminated copper conductors.

Physical Specifications

Plastic: High-impact, flame retardant, UL-rated 94 V-0, thermoplastic

M106 Type Surface Mount Box

Catalog Number	Dimensions	Color	Material ID
M106SMB-003	Height: 5.49" (13.9 cm)	Black	107431520
M106SMB-246	Width: 4.81" (12.2 cm)	Ivory	107431546
M106SMB-262	Depth: 1.22" (3.1 cm)	White	107431538
M106SMB-270		Gray	107431553

- Uniprise
- Copper
- Fiber
- Coax
- Multi-Conductor
- Enclosures
- Workstation Platforms
- Conduit
- Packaging
- Glossary/Index

Surface Mounted Boxes

M112 Surface Mount Box

The M112SMB Modular Surface-Mount Box is a 12-Port modular multimedia surface-mounted box designed for use with 1 to 12 modular jacks and/or fiber modules. The M112SMB can be mounted on a flat surface using the screws or the double-sided adhesive tape provided. Four mounting magnets (optional) are required for mounting on steel walls or furniture. The M112SMB is packaged with six color-coordinated M20AP Dust Cover/Blanks to cover any unused jacks. The outlet openings are numbered on both the base and cover for installation and maintenance identification.

Physical Specifications

Plastic: High-impact, flame retardant, UL-rated 94 V-0, thermoplastic

M112 Type Surface Mount Box

Catalog Number	Dimensions	Color	Material ID
M112SMB-003	Height: 9.13" (23.2 cm)	Black	106658164
M112SMB-246	Width: 4.81" (12.2 cm)	Ivory	106658149
M112SMB-262	Depth: 1.30" (3.3 cm)	White	106658156
M112SMB-270		Gray	106688419



M112SMB-246

Surface Mounted Box Accessories

Accessories For Surface Mount Boxes (100 Series)

The SMBFG fiber organizer has a small spindle to protect and support the fiber bend radius and two guides to route the fiber to the connector. It supports up to four fibers in an all-fiber environment in the M106SMB modular surface-mount box and supports up to six fibers in an all-fiber environment in the M112SMB modular surface-mount box.

The 345A mounting magnet contains two magnets and is used with the M104SMB modular surface-mount box.

The 362PS zone wiring kit labels are used with the M106SMB and M112SMB modular surface-mount boxes.

The D180880 mounting magnet kit contains four magnets and is used with the M106SMB and M112SMB modular surface-mount boxes.

Catalog Number	Description	Material ID
SMBFG	Fiber Organizer	107431512
345A	Mounting Magnet	106928765
362PS	Zone Wiring Kit Labels	108035049
D180880	Kit	106928765

- Uniprise
- Copper
- Fiber
- Coax
- Multi-Conductor
- Enclosures
- Workstation Platforms
- Conduit
- Packaging
- Glossary/Index

Surface Mounted Boxes

M200 Surface Mount Boxes

200 Series Surface Mount Boxes are designed for interior surface-mount applications and can support copper and fiber terminations. All information outlets simply snap into place. The 2, 4, and 8-port boxes are UL-rated and available in four standard colors.

The 200 series surface mount boxes can support new generation, larger diameter data cables, and offer multiple cable entrances through the base and/or sides.

The 200 series surface mount boxes are equipped with the corresponding number of dust covers and two port adapter housings. These adapter housings support two outlets each. A variety of other adapters are available but not included to configure LC, ST and SC fiber couplers, copper outlets, VGA, S-Video, Coax, BNC, and RCA couplers.

Features

- Support a wide range of applications and configurations using the following snap-in components: 8 Position Modular Outlets; S-Video Outlets; VGA Adapters; RCA Adapters; BNC Adapters; Coaxial Couplers
- Can support new generation, larger diameter data cables
- Cable entrances available through the base and/or sides
- Can mount to solid surfaces or single gang electrical boxes
- Easy front access to outlets, adapters and couplers
- Includes dust covers, cable ties, labels/label holders, adhesive backed velcro, double sided tape and screws
- Comes with label and label cover as well as a smooth surface for labeling the front of the enclosure
- Snap-in fiber spool is included to assist with fiber management (does not apply to the M202SMB and M204ASMB)
- Material: Plastic

Applications

- Consolidation point for zone wiring
- High speed data applications where larger cables are required (10G)
- Multimedia applications using copper, fiber and coaxial
- Utilized on kick plates for modular office furniture
- Plenum version for wireless access points and IP cameras

M200 Surface Mount Boxes

Catalog Number	Description	Color	Material ID
M202SMB-003	2 Port Surface Mount Box	Black	760057349
M202SMB-262	2 Port Surface Mount Box	White	760057364
M202SMB-246	2 Port Surface Mount Box	Ivory	760057356
M202SMB-270	2 Port Surface Mount Box	Gray	760057331
M202 Plenum SMB-262	2 Port Surface Mount Box	White	760067207
M204ASMB-003	4-Port Surface-Mount Box	Black	760057380
M204ASMB-262	4-Port Surface-Mount Box	White	760057372
M204ASMB-246	4-Port Surface-Mount Box	Ivory	760057398
M204ASMB-270	4-Port Surface-Mount Box	Gray	760057406
M204SMB-003	4-Port Surface-Mount Box	Black	760045005
M204SMB-246	4-Port Surface-Mount Box	Ivory	760045013
M204SMB-262	4-Port Surface-Mount Box	White	760044990
M204SMB-270	4-Port Surface-Mount Box	Gray	760045021
M208SMB-003	8-Port Surface-Mount Box	Black	760057422
M208SMB-262	8-Port Surface-Mount Box	White	760057414
M208SMB-246	8-Port Surface-Mount Box	Ivory	760057430
M208SMB-270	8-Port Surface-Mount Box	Gray	760057448



M208SMB-246

M202SMB-003



M204SMB-003

- Uniprise
- Copper
- Fiber
- Coax
- Multi-Conductor
- Enclosures
- Workstation Platforms
- Conduit
- Packaging
- Glossary/Index

Zone Boxes

M224 Type Zone Box

The new low profile M224CPN Consolidation Box is introduced as an enhancement to the zone wiring architecture.

This product provides a connection and distribution point for data and telecom cables in installations requiring a consolidation point. The slim design permits installation in a variety of non-plenum spaces such as under floors, limited space closets, inside paneled furniture, on walls in plain view and on shelves. The box can be mounted, with additional support, to single- or dual-gang electrical type boxes. For best results, the box is mounted on a flat surface, horizontally or vertically. The new M224CPN is substantially smaller than the M36P (36-Port plenum) box, only 27% of the box volume and 36% of the box area.

The box design utilizes four removable panels that can accommodate a variety of copper and fiber based connectors. Each panel will hold up to six connectors each. The box has a capacity of 24 dual SC connectors, single SC connectors, dual LC connectors, ST connectors, copper outlets, S-Video, RCA, BNC and F-type video connectors, or any combination thereof. Connector types can be mixed and matched within the box by using two different panels. The box comes equipped with four 6-port inserts, two blank inserts, 12 dust covers for port openings, closing screws, wire ties, and instructions.

This panel has the most variety in connector options; it accommodates all but the dual SC connectors. Three fiber optic splice organizers are available which will accommodate fusion, mechanical or mass fusion splices.



M224CPN-246

Features

- Non-metallic housing
- 24-Port capacity
- Accommodates copper information outlets, fiber connectors and copper and fiber terminations
- Can be populated with any CommScope voice, data or video outlet
- Expandable/Stackable features
- Easy access for terminations and moves, adds and changes
- Designed for mounting in various non-plenum environments (i.e., on the floor, under floor tile, surface-mount, wall, furniture, inside cabinets)
- Supports cable/port labeling
- Equipped with removable cover section for cord/label access that does not expose horizontal cables/terminations

Physical Specifications

Burn Rating: Non-plenum

M224 Type Zone Box

Catalog Number	Description	Dimensions	Color	Material ID
M224CPN-003	24-Port Zone Box, non-plenum (Includes 1 box, 1 cover, 4 six port panels, 2 blank panels)	Height: 12.14" (30.8 cm)	Black	700016462
M224CPN-246	24-Port Zone Box, non-plenum (Includes 1 box, 1 cover, 4 six port panels, 2 blank panels)	Width: 8.45" (21.5 cm)	Ivory	700016470
M224CPN-270	24-Port Zone Box, non-plenum (Includes 1 box, 1 cover, 4 six port panels, 2 blank panels)	Depth: 1.44" (3.7 cm)	Gray	700016496
M224CPN-262	24-Port Zone Box, non-plenum (Includes 1 box, 1 cover, 4 six port panels, 2 blank panels)		White	700016488
M224MSP-003	Panel Kit Includes 4 Six Port Panels of One Color		Black	700016504
M224MSP-246	Panel Kit Includes 4 Six Port Panels of One Color		Ivory	700016512
M224MSP-262	Panel Kit Includes 4 Six Port Panels of One Color		White	700016520
M224MSP-270	Panel Kit Includes 4 Six Port Panels of One Color		Gray	700016538
M224SCP-003	Panel Kit Includes 4-Dual SC Panels of One Color		Black	700019482
M224SCP-246	Panel Kit Includes 4-Dual SC Panels of One Color		Ivory	700019490
M224SCP-262	Panel Kit Includes 4-Dual SC Panels of One Color		White	700019508
M224SCP-270	Panel Kit Includes 4-Dual SC Panels of One Color		Gray	700019516
M224FOS-262	Fiber Optic Spool Kit Includes 2 White Spools		White	700016553

Uniprise

Copper

Fiber

Coax

Multi-Conductor

Enclosures

Workstation Platforms

Conduit

Packaging

Glossary/Index

Zone Boxes

M36CPP Type Zone Box

The M36CPP Data/Communication Distribution Box is a zone wiring box (i.e. consolidation point [CP]) that provides for the distribution of data and telecommunication signals throughout the work area environment. The box has 36 positions for copper and/or fiber connectors. It is intended to mount above ceilings or below floors in open office buildings.

The key benefit is that it saves costs in moves, adds and changes (MACs) when zone cabling is required in a plenum environment. The Box is UL Listed to meet the stringent plenum requirements. The National Electric Code allows locating this type of zone box in space used for environmental air.

The M36CPP Distribution Box Assembly comes with: connector bracket, plenum cover, plenum box, foam fence, fiber reel (optional to use), foam retainer, bushing (optional to use), fire foam, interconnection label, installation instructions, hex nut (No. 4-40), long pan-head screw (No. 8-32 by 3/38 in [9.5 mm]) and plenum cable tie.

M36CPP Type Zone Box

Catalog Number	Description	Dimensions	Material ID
M36CPP DATA	36-Port Zone Wiring Box	Height: 19.12" (48.6 cm) Width: 14.14" (35.9 cm) Depth: 1.82" (4.6 cm)	108482845



M36CPP DATA

Zone Boxes

M48CPP Type Zone Box

The 48-Port Plenum Zone Wiring Box provides a connection and distribution point for data and telecom cables in installations requiring a consolidation point. The design includes a 3.35 in x 2.566 in (85.04 mm x 65.18 mm) rectangular bottom knockout to be used in conjunction with a standard dual-gang electrical box, in addition to twelve 0.75 in (19.05 mm) knockouts for use with conduit.

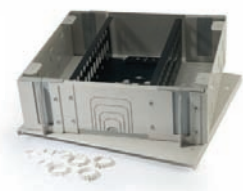
The size of the M48CCP design will allow installation in a variety of plenum spaces such as under floors and above ceilings. The design has 48 positions that accommodate a variety of copper, fiber and video connectors. It also has one fire foam entrance and four fire foam exit areas for plenum-rated cable (4-pair and 25-pair).

Features

- 48-port capacity
- Support copper outlets, fiber connectors, copper and fiber terminations
- Easy access for terminations, moves, adds and changes
- Designed for mounting in various plenum and non-plenum environments (floor, under floor, surface mount or wall)
- Supports cable/port labeling
- Equipped with removable cover section for cord/label access and does not expose horizontal cables

M48CPP Type Zone Box

Catalog Number	Description	Dimensions	Material ID
M48CPP	48-Port Zone Wiring Box	Height: 13.08" (33.2 cm) Width: 14.0" (35.6 cm) Depth: 4.25" (10.8 cm)	700188923
110C Connecting Block	110C Connecting Block Kit for Plenum Box		760006395



M48CPP

Accessories

L, LE and FP Type Faceplate Labels and Label Covers

Labels are on 8-1/2 x 11 inch sheets of paper that are to be used with a printer. The labels are easy to punch out since the paper is perforated in the shape of the labels. The clear label covers protect and hold the labels in place.

L, LE and FP Type Faceplate Labels and Label Covers

Catalog Number	Package	Min. Order Quantity	Material ID
108492927	L-Type faceplate label cover	5 pkgs, 100 covers per pkg.	108492927
108492935	LE/FP-Type faceplate label cover	5 pkgs, 100 covers per pkg.	108492935
108492943	L-Type faceplate label card sheet	50 pkgs, 10 sheets per pkg.	108492943
108492950	LE/FP-Type faceplate label card sheet	50 pkgs, 10 sheets per pkg.	108492950

Accessories

M20/M21/M81 Dust Covers

The M20AP Covers are dual-purpose blank Dust Covers designed for use with the modular outlets and modular faceplate kits (except for the Shuttered clips and Benelux faceplates). When the M20AP is used as a Dust Cover, it is inserted over the outlet opening and will protect the jack wires from dust. The M20AP can also be used with modular faceplates as a blank cover for empty jack openings which are not populated with modular outlets.

The M21A Dust Covers are for use with CommScope information outlets. The M21A installs over the Jack opening of the outlet, leaving the Icon area visible.

The M20AP and the M21A are packaged 100 to a bag with 5 bags in a box.

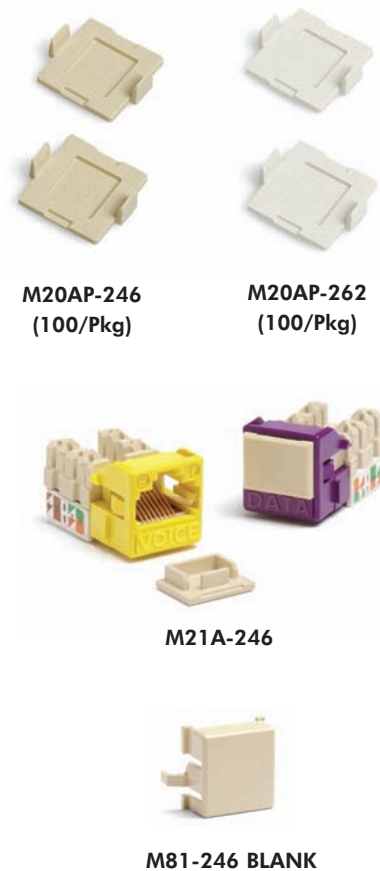
The M81 (Blank) is a rear snap-in dust cover to fill empty or unused ports in all CommScope f-plates, surface and multi-media boxes, Mod style panels or related mounting housings where you would normally deploy an outlet or adapter.

Physical Specifications

Plastic: High-impact, flame retardant, UL-rated 94 V-0, thermoplastic

M20/M21/M81 Dust Covers

Catalog Number	Dimensions	Color	Material ID
M20AP-003	Height: 0.69" (1.8 cm)	Black	107065583
M20AP-246	Width: 0.75" (1.9 cm)	Ivory	107067860
M20AP-262	Depth: 0.20" (0.05 cm)	White	107067928
M20AP-270		Gray	107067951
M20AP-215		Cream	108481003
M20AP-148		Almond	760075051
M21A-003		Black	108066325
M21A-112		Orange	108066333
M21A-123		Yellow	108066341
M21A-226		Green	108066358
M21A-246		Ivory	108066457
M21A-262		White	108066465
M21A-270		Gray	108066473
M21A-317		Red	108066481
M21A-318		Blue	108066499
M21A-361		Violet	108337692
M21A-215		Misty Cream	108480997
M81-003 (BLANK)	Height: 0.69" (17 mm)	Black	106837206
M81-148 (BLANK)	Width: 0.69" (17 mm)	Almond	760074237
M81-246 (BLANK)	Depth: .514" (13 mm)	Ivory	106837222
M81-262 (BLANK)		White	106837230



Uniprise

Copper

Fiber

Coax

Multi-Conductor

Enclosures

Workstation Platforms

Conduit

Packaging

Glossary/Index

Accessories

M60/M61 Icon Inserts

The M60 and M61 ICONs are small plastic inserts used to depict applications on the Commscope information outlets. Both the M60 and M61 are packaged in 25 in a polybag and 20 polybags in a box.

The M60 is a single piece ICON that mounts with the jack into the faceplate opening. When installed with the jack and faceplate the M60 ICON appears directly above the jack and is flush with the faceplate.

- Telephone – symbol representing a telephone application
- Computer – symbol representing a computer application
- DATA – word representing a data application
- VOICE – word representing a voice application
- Blank – has blank space for writing or denoting any application the user may designate or require

The M61 ICON is a strip of (3) ICONs. Each ICON in the M61 ICON strip will mount directly to the MGS or UNJ style jack.

- Comp – Computer symbol representing computer application
- Data – Word representing data application
- Voice – Word representing voice application
- Blank – Blank space for denoting any application the user may designate or require



M61 Icon Inserts

M60 Icon Inserts



- Uniprise
- Copper
- Fiber
- Coax
- Multi-Conductor
- Enclosures
- Workstation Platforms
- Conduit
- Packaging
- Glossary/Index

Accessories

M60 Icon Inserts

M60 Icon Inserts

Catalog Number	Description	Color	Material ID
M60A-003	Telephone ICON	Black	107296386
M60A-112	Telephone ICON	Orange	107296402
M60A-123	Telephone ICON	Yellow	107296394
M60A-246	Telephone ICON	Ivory	107296352
M60A-262	Telephone ICON	White	107296378
M60A-270	Telephone ICON	Gray	107296360
M60A-317	Telephone ICON	Red	107296428
M60A-318	Telephone ICON	Blue	107296436
M60B-003	Blank ICON	Black	107296485
M60B-112	Blank ICON	Orange	107296501
M60B-123	Blank ICON	Yellow	107296493
M60B-226	Blank ICON	Green	107296519
M60B-246	Blank ICON	Ivory	107296451
M60B-262	Blank ICON	White	107296477
M60B-270	Blank ICON	Gray	107296469
M60B-317	Blank ICON	Red	107296527
M60B-318	Blank ICON	Blue	107296444
M60C-112	Computer ICON	Orange	107296584
M60C-123	Computer ICON	Yellow	107296576
M60C-226	Computer ICON	Green	107296592
M60C-246	Computer ICON	Ivory	107296535
M60C-262	Computer ICON	White	107296550
M60C-270	Computer ICON	Gray	107296543
M60C-317	Computer ICON	Red	107296600
M60C-318	Computer ICON	Blue	107296618
M60D-003	DATA ICON	Black	107296659
M60D-112	DATA ICON	Orange	107296675
M60D-123	DATA ICON	Yellow	107296667
M60D-226	DATA ICON	Green	107296683
M60D-246	DATA ICON	Ivory	107296626
M60D-262	DATA ICON	White	107296642
M60D-270	DATA ICON	Gray	107296634
M60D-317	DATA ICON	Red	107296691
M60D-318	DATA ICON	Blue	107296709
M60E-003	Voice ICON	Black	107296741
M60E-112	Voice ICON	Orange	107296766
M60E-123	Voice ICON	Yellow	107296758
M60E-226	Voice ICON	Green	107296774
M60E-246	Voice ICON	Ivory	107296717
M60E-262	Voice ICON	White	107296733
M60E-270	Voice ICON	Gray	107296725
M60E-317	Voice ICON	Red	107296782
M60E-318	Voice ICON	Blue	107296790
M60M-148	Voice/Computer/Telephone ICON	Almond	760076034

- Uniprise
- Copper
- Fiber
- Coax
- Multi-Conductor
- Enclosures
- Workstation Platforms
- Conduit
- Packaging
- Glossary/Index

Accessories

M61 Icon Inserts

M61 Icon Inserts

Catalog Number	Description	Color	Material ID
M61K-003	Icon for MGS400	Black	760103762
M61K-112	Icon for MGS400	Blue	760103770
M61K-123	Icon for MGS400	Misty Cream	760103796
M61K-215	Icon for MGS400	Green	760103838
M61K-226	Icon for MGS400	Gray	760103788
M61K-246	Icon for MGS400	Ivory	760103747
M61K-262	Icon for MGS400	Orange	760103739
M61K-270	Icon for MGS400	Red	760103754
M61K-317	Icon for MGS400	White	760103812
M61K-318	Icon for MGS400	Yellow	760103804
M61K-361	Icon for MGS400	Violet	760100909
M61F-003	Voice Icon Connector	Black	108066234
M61F-112	Voice Icon Connector	Orange	108066242
M61F-123	Voice Icon Connector	Yellow	108066259
M61F-226	Voice Icon Connector	Green	108066267
M61F-246	Voice Icon Connector	Ivory	108066275
M61F-262	Voice Icon Connector	White	108066283
M61F-270	Voice Icon Connector	Gray	108066291
M61F-317	Voice Icon Connector	Red	108066309
M61F-318	Voice Icon Connector	Blue	108066317
M61H-003	Computer Icon, MPSE, DATA	Black	108373515
M61H-112	Computer Icon, MPSE, DATA	Orange	108373523
M61H-123	Computer Icon, MPSE, DATA	Yellow	108373531
M61H-215	Computer Icon, MPSE, DATA	Misty Cream	108481029
M61H-226	Computer Icon, MPSE, DATA	Green	108373549
M61H-246	Computer Icon, MPSE, DATA	Ivory	108373564
M61H-262	Computer Icon, MPSE, DATA	White	108373572
M61H-270	Computer Icon, MPSE, DATA	Gray	108373580
M61H-317	Computer Icon, MPSE, DATA	Red	108373598
M61H-318	Computer Icon, MPSE, DATA	Blue	108373606
M61H-361	Computer Icon, MPSE, DATA	Violet	108373614

Uniprise

Copper

Fiber

Coax

Multi-Conductor

Enclosures

Workstation Platforms

Conduit

Packaging

Glossary/Index

Multimedia Adapters/Couplers

Each individually packaged adapter/coupler comes with (4) adapter housings (black, gray, ivory and white), with the exception of S-Video to 110 and the RCA to 110 products.

Catalog Number	Description	Material ID
S-Video to 110 Punchdown Module		
M81-SVHS-110-003	Black S-Video/110 Connector	760005256
M81-SVHS-110-246	Ivory S-Video/110 Connector	760005264
M81-SVHS-110-262	White S-Video/110 Connector	760005272
M81-SVHS-110-270	Gray S-Video/110 Connector	760005280
S-Video to S-Video		
M81-SVHS-SVHS-003	S-Video Pass Through, Black	760101014
M81-SVHS-SVHS-246	S-Video Pass Through, Ivory	760101030
M81-SVHS-SVHS-262	S-Video Pass Through, White	760101048
M81-SVHS-SVHS-270	S-Video Pass Through, Gray	760101022
RCA to 110 Punchdown Module		
M81-RCA-110-003-W	Black Housing/White Connector	760005298
M81-RCA-110-246-W	Ivory Housing/White Connector	760005306
M81-RCA-110-262-W	White Housing/White Connector	760005314
M81-RCA-110-270-W	Gray Housing/White Connector	760005322
M81-RCA-110-003-Y	Black Housing/Yellow Connector	760005330
M81-RCA-110-246-Y	Ivory Housing/Yellow Connector	760005348
M81-RCA-110-262-Y	White Housing/Yellow Connector	760005355
M81-RCA-110-270-Y	Gray Housing/Yellow Connector	760005363
M81-RCA-110-003-R	Black Housing/Red Connector	760005371
M81-RCA-110-246-R	Ivory Housing/Red Connector	760005389
M81-RCA-110-262-R	White Housing/Red Connector	760005397
M81-RCA-110-270-R	Gray Housing/Red Connector	760005405
M81-RCA-110-003-B	Black Housing/Black Connector	760005413
M81-RCA-110-246-B	Ivory Housing/Black Connector	760005421
M81-RCA-110-262-B	White Housing/Black Connector	760005439
M81-RCA-110-270-B	Gray Housing/Black Connector	760005447
RCA to RCA Module (pass-through)		
M81-RCA-PT-W	White Coupler	760005454
M81-RCA-PT-Y	Yellow Coupler	760005462
M81-RCA-PT-R	Red Coupler	760005470
M81-RCA-PT-B	Black Coupler	760005488
BNC to BNC Module (pass-through)		
M81-BNC-B COUPLER	BNC to BNC (50 ohm)	108009424
M81-BNC	BNC Coax Coupler (75 ohm)	760074914
F Coax to F Coax Module (pass-through)		
M81C	F-Coax Pass Through	108009432
Audio Jack		
M81-S35MM-S35MM	3.5 mm Audio Jack (Ivory, White, Black, and Gray Mounting Modules Included)	760101006



M81 Blank Dust Covers



M81-SVHS-110-003



M81-SVHS-SVHS-270



M81-RCA-110-270-R



M81-RCA-PT-R



M81-BNC-B



M81C-COUPLER



M81-S35MM-S35MM

Uniprise

Copper

Fiber

Coax

Multi-Conductor

Enclosures

Workstation Platforms

Conduit

Packaging

Glossary/Index

Multimedia Adapters/Couplers

The M30FP series of adapters are for use with the FP series faceplates or any 200 series surface mount box.

Easy snap-in mounting and no assembly or tools required.

Catalog Number	Description	Color	Material ID
VGA to VGA (15 pin pass-through)			
M30-FP-VGA-PT-003	Black VGA Coupler	Black	760028704
M30-FP-VGA-PT-246	Ivory VGA Coupler	Ivory	760028712
M30-FP-VGA-PT-262	White VGA Coupler	White	760028720
M30-FP-VGA-PT-270	Gray VGA Coupler	Gray	760028738
S-Video to 110			
M30-FP-SVHS-110-003	Black S-Video to 110	Black	760013094
M30-FP-SVHS-110-246	Ivory S-Video to 110	Ivory	760013102
M30-FP-SVHS-110-262	White S-Video to 110	White	760013110
M30-FP-SVHS-110-270	Gray S-Video to 110	Gray	760013128
RCA to 110			
M30-FP-3RCA-110-003	Black 3 Port RCA to 110	Black	760017541
M30-FP-3RCA-110-246	Ivory 3 Port RCA to 110	Ivory	760017558
M30-FP-3RCA-110-262	White 3 Port RCA to 110	White	760017566
M30-FP-3RCA-110-270	Gray 3 Port RCA to 110	Gray	760017574



M30-FP-SVHS-110-246



M30-FP-3RCA-110-270



M30-FP-VGA-PT-003

DVI adapters can support one DVI connector and can be snapped on to all CommScope flexible faceplates (single or double gang), Tamper Resistant Faceplates, and the M208SMB Surface Mount Box.

The DVI is a dual link female to female connector with three rows of eight pins and four contacts around the blade.

Catalog Number	Dimensions	Color	Material ID
DVI to DVI			
M30FP DVI to DVI Adapter-003	2.012 x 0.924 x 0.689 in.	Black	760106328
M30FP DVI to DVI Adapter-246	2.012 x 0.924 x 0.689 in.	Ivory	760106302
M30FP DVI to DVI Adapter-262	2.012 x 0.924 x 0.689 in.	White	760106294
M30FP DVI to DVI Adapter-270	2.012 x 0.924 x 0.689 in.	Gray	760106310



M30FP DVI to DVI Adapter

Uniprise

Copper

Fiber

Coax

Multi-Conductor

Enclosures

Workstation Platforms

Conduit

Packaging

Glossary/Index