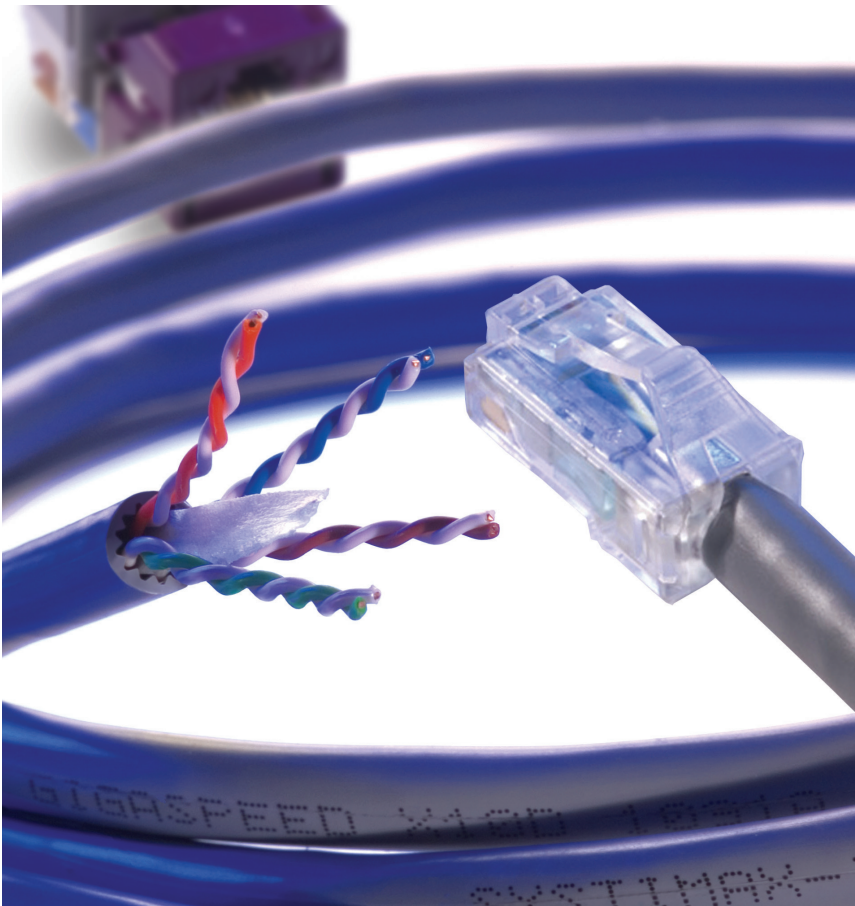


CommScope's 10 Gigabit SYSTIMAX® Copper Cabling Gets Toshiba's Benelux Headquarters Ready for the Future

GigaSPEED® X10D Solution ensures fast speech and data transmission combined with continuous network access



Toshiba is one of the world's biggest suppliers of notebooks for professional and consumer markets. In the past, the company had two offices in the Benelux countries: one in Capelle aan den IJssel, the other in Zaventem in Netherlands. In 2005 it decided to merge these offices and establish a new Benelux headquarters at Breda in Netherlands.

"We acquired the office in Capelle aan den IJssel in 1992 and completely renovated it in 2002. We renovated the network as well - everything from the positioning of connection points to the laying of cable. We chose KPN to work out a complete concept for us," said Gerard Zandstra, Project Leader Internal Automation at Toshiba.

To guarantee a fast network, KPN drew up a concept with SYSTIMAX GigaSPEED XL cabling as a key component. This provided Toshiba with a total solution for data, voice and video traffic. To handle this, the gigabit performance of GigaSPEED XL cabling far exceeded specifications of the Category 6 cabling standard.

SYSTIMAX®
SOLUTIONS

“ As provider and seller of the solutions, KPN let us know that the capacity of copper cabling had been considerably increased since the previous work was done. In fact, the introduction of the 10 Gb/s SYSTIMAX GigaSPEED X10D copper cabling was something of a revolution. For us, this would mean a radical improvement in our transmission speed. ”

Gerard Zandstra, Project Leader Internal Automation at Toshiba

When the management of Toshiba decided to merge the offices in Capelle and Zaventem in a single office at Breda, Gerard Zandstra faced a new challenge. The new premises did not have a network infrastructure in place, so everything had to be built from scratch.

“The network plays a central role in our communication with customers, partners and branch offices,” he said. “We are completely dependent on the network, not just for data communications but telephony as well. The most important requirements for the new office set-up were therefore reliability and speed.”

Based on Toshiba’s prior positive experience in Capelle, Gerard Zandstra once again opted for the services of KPN and cabling from CommScope’s range of SYSTIMAX infrastructure solutions.

“As provider and seller of the solutions, KPN let us know that the capacity of copper cabling had been considerably increased since the previous work was done,” he said. “In fact, the introduction of the 10 Gb/s SYSTIMAX GigaSPEED X10D copper cabling was something of a revolution. For us, this would mean a radical improvement in our transmission speed.”

Toshiba decided on the Category6A/Class E_A GigaSPEED X10D cabling for the new office, and soon noticed that the migration was relatively easy. “It was reasonably cheap and simple for us to migrate to this level,” said Gerard Zandstra. “The GigaSPEED X10D cabling also uses RJ45 connectors. This meant it was straightforward to connect existing equipment and there was no need to purchase new components.”

In Gerard Zandstra’s opinion, with Category 6A/Class E_A cabling installed, the biggest difference is that the system response stays at an optimal level even when using extremely heavy applications such as video conferencing. This helps Toshiba save a lot of time and money on trips between branches as a result of the fast new connections.

“At present we are not using the full capacity of our cabling network, but it is good to know that our cabling will not be a limiting factor for years to come. With 10 Gigabit performance we are ready for the future.”

Adding to this, Frits Kuus, Business Development Manager of CommScope Netherlands said: “GigaSPEED X10D network infrastructure immediately delivers higher performance and smoothes the path towards tomorrow’s more network intensive applications. Proven, reliable copper cabling technology has taken a big step forward without making life complex for network users.”