



# E-ATM300 Field Configuration Tool (EFCT)

## Installation and Operation User Guide



Visit the Andrew tab on the Commscope website at [www.commscope.com](http://www.commscope.com) to download latest firmware (software) and antenna definition file before initial installation.

Register online to receive email notifications of file updates.

---

Andrew, A CommScope Company

**Customer Support Center**

North America: +1-800-255-1479, Option 1

International: +1-779-435-6500, Option 1

[www.commscope.com/andrew](http://www.commscope.com/andrew)

Visit our Web site at [aw.commscope.com](http://aw.commscope.com) or contact your local Andrew representative for more information.

© 2009 CommScope, Inc. All rights reserved.

Andrew Wireless Solutions is a trademark of CommScope. All trademarks identified by ® or ™ are registered trademarks or trademarks, respectively, of CommScope. This document is for planning purposes only and is not intended to modify or supplement any specifications or warranties relating to Andrew products or services.



# Table of Contents

<b>Introduction.....</b>	<b>iii</b>
<b>Section 1 Initial Installation of EFCT on the PC.....</b>	<b>1-1</b>
<b>Section 2 Operation .....</b>	<b>2-1</b>
<b>Section 3 Updating the Antenna Definition File .....</b>	<b>3-1</b>
<b>Section 4 Error Messages .....</b>	<b>4-1</b>

This page intentionally left blank.

# Introduction

The E-ATM300 Field Configuration Tool (EFCT) is a software tool that controls the E-ATM300 actuator specifically designed for the Ericsson RBS controller, which uses the Ericsson proprietary protocol to control the actuator. The EFCT resides on a PC and allows the user to communicate tilt commands to the actuator through an ATC200-LITE-USB controller.

Note that the E-ATM300 EFCT has the following limitations:

- Communicates with one actuator at a time directly connected to the controller by a control cable. The Ericsson RBS controller only controls one actuator per sector. Therefore daisy chaining is not recommended.
- Works only over a serial port and not a USB port.
- Only use the EFCT software and not the ATCLite software.

# Notices and Precautions

## **IMPORTANT**

Before installing the EFCT Tool to operate the ATC200-LITE-USB controller, please **DOWNLOAD the latest antenna definition file and controller software** from the Commscope web site at [www.commscope.com](http://www.commscope.com). Please register online to receive E-mail notifications for software updates.

## **WARRANTY NOTICE**

Proper installation procedures must be followed when installing and operating RET equipment. Failure to assure installations are done properly by trained installation personnel and to follow procedures discussed in this bulletin may cause warranty for such products to be void.

Andrew requires that all RET installations be pre-tested and configured prior to installation. Failure to conduct pre-test and pre-installation procedures defined by Andrew will void warranty.

## **SAFETY NOTICE**

The installation, maintenance, or removal of an antenna requires qualified, experienced personnel. Andrew installation instructions are written for such installation personnel. Antenna systems should be inspected once a year by qualified personnel to verify proper installation, maintenance, and condition of equipment.

Andrew disclaims any liability or responsibility for the results of improper or unsafe installation practices.



Do not install near power lines. Power lines, telephone lines, and guy wires look the same. Assume any wire or line can electrocute you.



Do not install on a wet or windy day or when lightning or thunder is in the area. Do not use metal ladder.



Wear shoes with rubber soles and heels. Wear protective clothing including a long-sleeved shirt and rubber gloves.

*Installation Training Available at Andrew Institute*

# Section 1

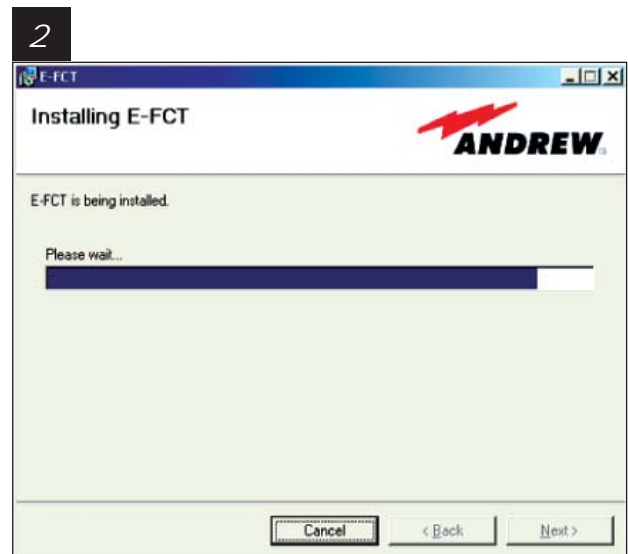
## Initial Installation of EFCT Software on the PC

The installation program is obtained from the CommScope website ([www.commscope.com](http://www.commscope.com)): go to **Andrew**→**Products**→**Antennas**→**Base Station Antenna Systems**→**Teletilt RET System**→**Downloads**→**Teletilt® RET Products Software, Firmware, Tools, and Manuals**.

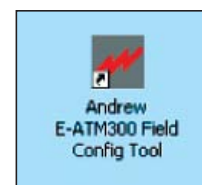
Download the zip file, E-FCTSetup, to the Desktop of the PC and expand the zip file.

Begin the installation by double-clicking on E-FCTSetup.msi.

The following screens show the installation process.



4  
Shortcut Icon for EFCT on Desktop.

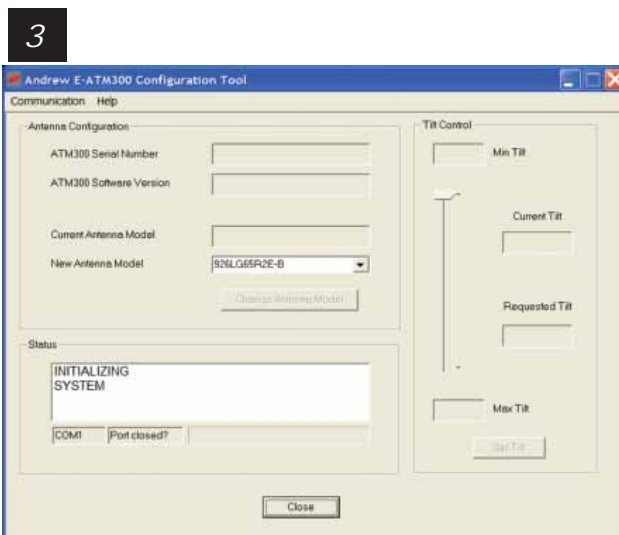
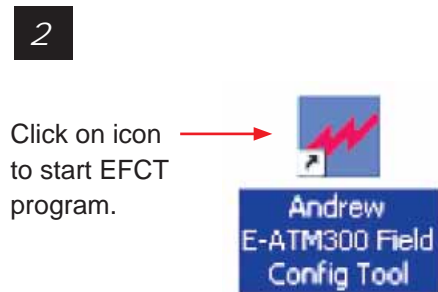
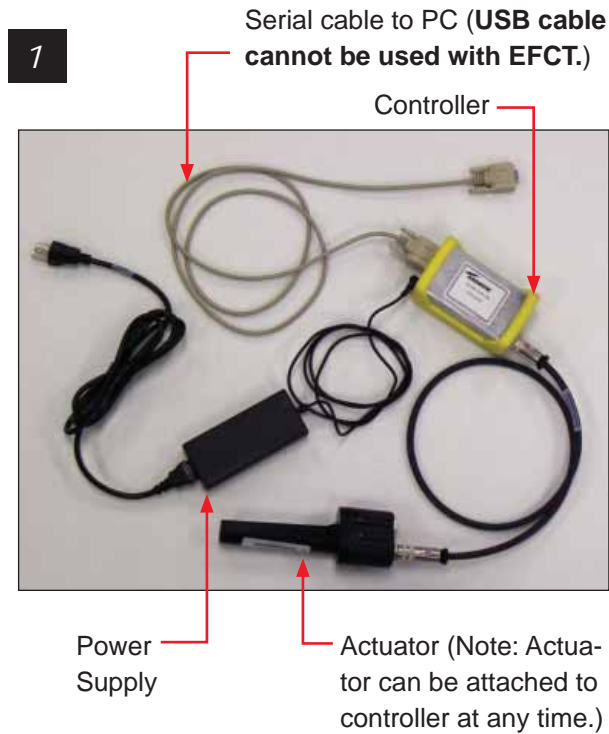


This page intentionally left blank.

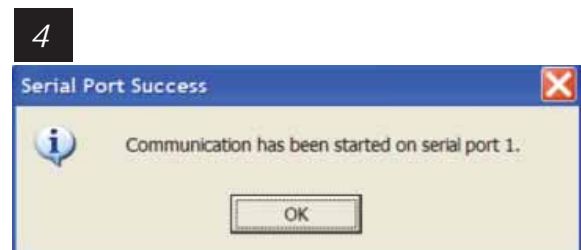
# Section 2

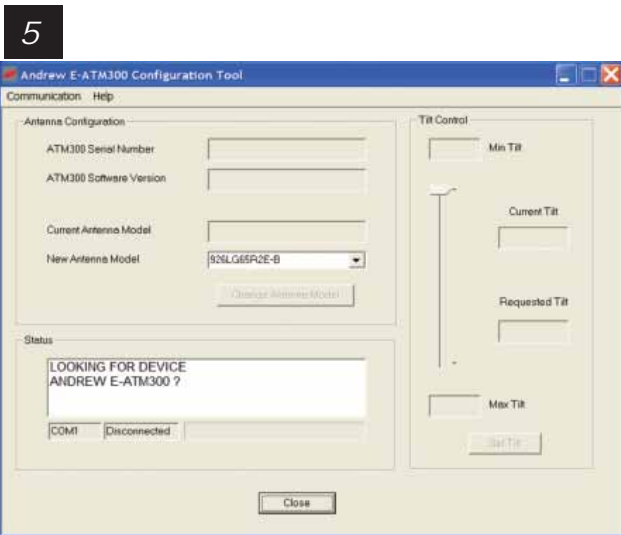
## Operation

Typical setup:

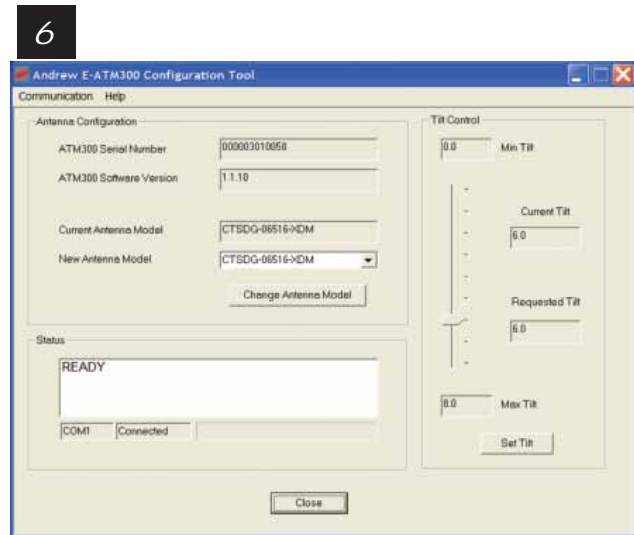


Wait for initialization.



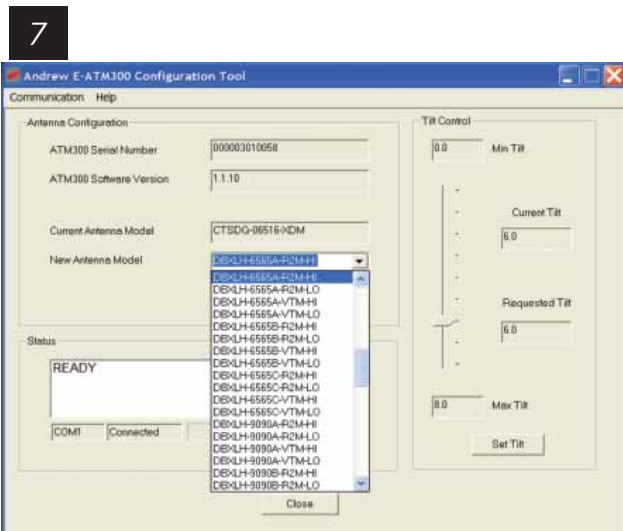


Searching for actuator.

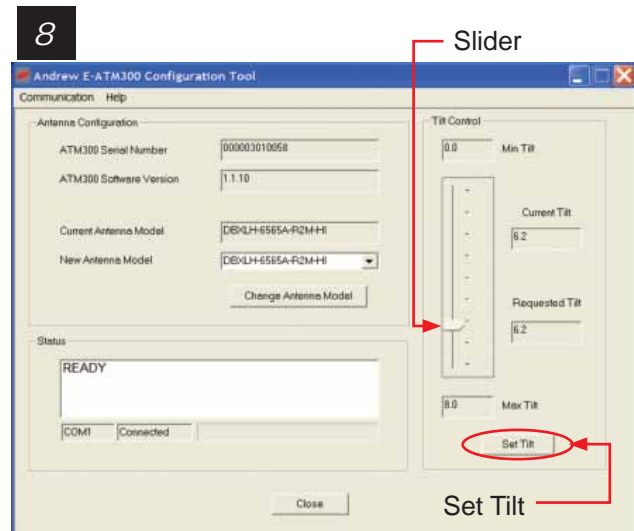


Actuator found.

(Note: If not previously configured, **Current Antenna Model** window is blank.)



Choose correct antenna model type.



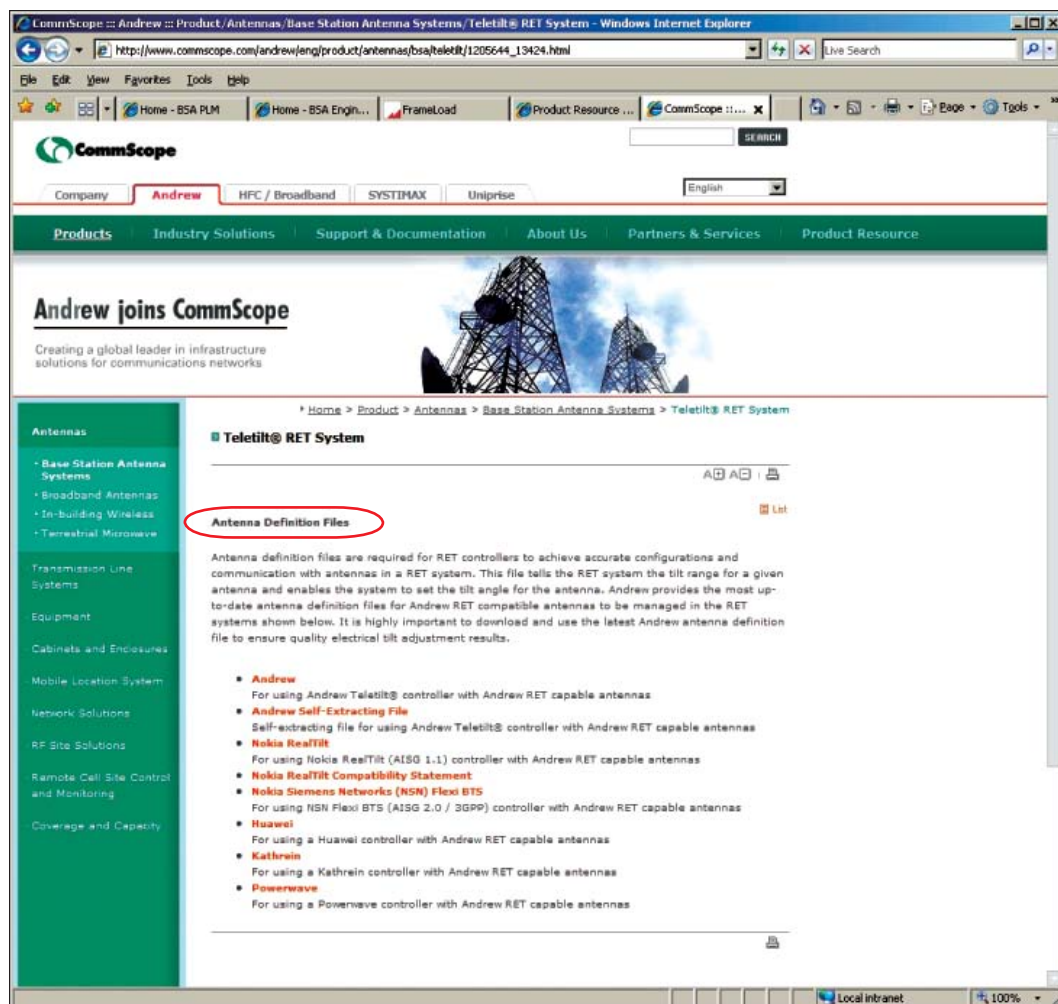
Change tilt (drag slider and click **Set Tilt** button).

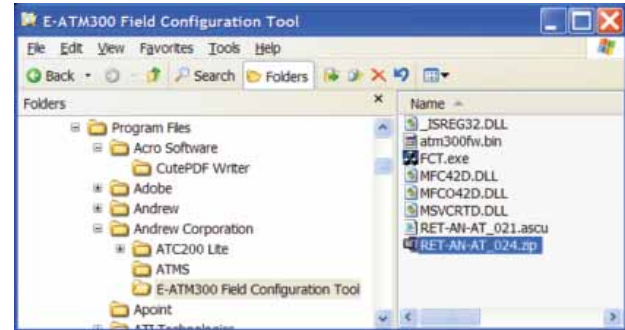
# Section 3

## Updating the Antenna Definition File

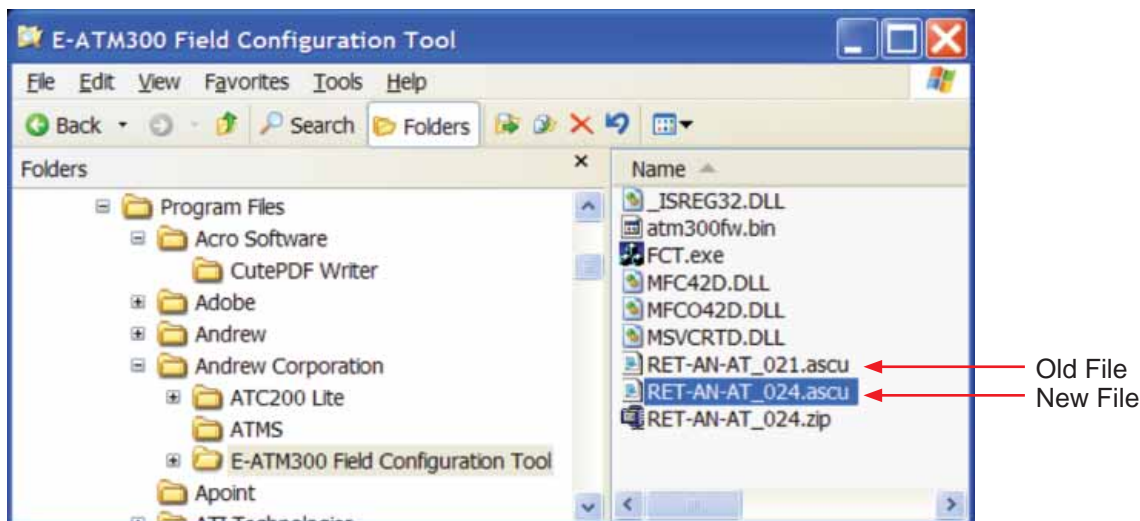
EFCT uses an antenna definition file to provide the pull-down menu listing the antenna models with their electrical tilt ranges. If an antenna is missing from the list, it is necessary to update the antenna definition file.

- To download the latest antenna definition file from the CommScope website (www.commscope.com), go to: **Andrew**→**Products**→**Antennas**→**Base Station Antenna Systems**→**Teletilt RET System**→**Downloads**→**Antenna Definition Files**.
- Locate the **Andrew** firmware on the Antenna Definition Files page. Click on the **Andrew Antenna Definition File** hyperlink to download the latest data file.





Choose the save option, and save the zip file in the folder where the EFCT program was installed (default: **C:**→**Program files**→**Andrew Corporation**→**E-ATM300 Field Configuration Tool**).



Extract the antenna definition file to the same folder and delete the old file. Note: The antenna definition file always begins with RET-AN-AT and the latest revision will have the highest number following this prefix.

If EFCT is open, close it and click on the EFCT icon to restart the program. If EFCT is left open, it will not access the new antenna definition file.

# Section 4

## Troubleshooting

Error/Symptom	Possible Cause	Remedy
<b>No recognized Antenna Model?</b>	The actuator was previously configured with an antenna model not in the current antenna definition file.	Update the antenna definition file (see Section 4).
	The antenna definition file is missing.	Restore the antenna definition file (see Section 4).
<b>Not connected</b>	The actuator is not connected.	Check connection.
	Not using the Ericsson special actuator.	Use appropriate actuator.
<b>Problem opening port?</b>	Something is already using the COM port.	Make sure only one EFCT is running.
		Make sure nothing else is using the same COM port.
Desired Antenna Model is not found in pull-down list	Antenna definition file is outdated or corrupted.	Update the antenna definition file (see Section 4).
No model in antenna model window	Actuator not connected to controller.	Verify actuator is properly connected to the controller.
	EFCT program does not work with USB cable.	Use the serial cable to connect the controller to the PC (USB cable will not work with E-ATM300 actuator).
Incorrect tilt range or same tilt for all antenna models	Corrupted antenna definition file.	Update the antenna definition file (see Section 4).
Device scan does not find actuator	Used USB cable.	Use serial cable.

This page intentionally left blank.