



ATC300-1000 Teletilt® Control System Computer Interface Setup



Andrew Solutions
Customer Support Center

North America: +1-800-255-1479, Option 1

International: +1-779-435-6500, Option 1

www.commscope.com/andrew

Visit our Web site at www.commscope.com or contact your local Andrew Solutions representative for more information.

© 2010 CommScope, Inc. All rights reserved.

Andrew Solutions is a trademark of CommScope. All trademarks identified by ® or ™ are registered trademarks or trademarks, respectively, of CommScope. This document is for planning purposes only and is not intended to modify or supplement any specifications or warranties relating to Andrew Solutions products or services.

Statement of Purpose:

This guide applies to ATC300-1000 firmware version **2.26** or earlier.

Starting with version **2.27** and later versions, the ATC300-1000 can be connected to the network out of the box and will establish a DHCP connection.

The ATC300-1000 default hostname is its serial number.

An upgrade to the latest firmware is still recommended and may be performed once network communication is established. See Bulletin 639544, ATC300-1000 Teletilt Remote Control Variable Electrical Downtilt System Installation and Operation User Guide, Section 9.

Please contact the Andrew Customer Support Center, (see bottom of cover page), for any questions.

Notices and Precautions

WARRANTY NOTICE

Proper installation procedures must be followed when installing and operating RET equipment. Failure to assure installations are done properly by trained installation personnel and to follow procedures discussed in this bulletin may cause warranty for such products to be void.

Andrew requires pretesting actuators on the ground prior to installation using the Andrew portable controller and the latest version of the controller software (available online at www.commscope.com/andrew under **Products**→**Antennas**→**Teletilt® RET System**). This will verify proper actuator functionality and also ensure that the latest available actuator firmware release is installed on the actuator. Failure to conduct pre-test and pre-installation procedures defined by Andrew will void warranty.

SAFETY NOTICE

The installation, maintenance, or removal of an antenna requires qualified, experienced personnel. Andrew installation instructions are written for such installation personnel. Antenna systems should be inspected once a year by qualified personnel to verify proper installation, maintenance, and condition of equipment. Andrew disclaims any liability or responsibility for the results of improper or unsafe installation practices.

It is recommended that transmit power be turned off when the field installation is performed. Follow all applicable safety precautions as shown on this page.



Do not install near power lines. Power lines, telephone lines, and guy wires look the same. Assume any wire or line can electrocute you.



Do not install on a wet or windy day or when lightning or thunder is in the area. Do not use metal ladder.



Wear shoes with rubber soles and heels. Wear protective clothing including a long-sleeved shirt and rubber gloves.

Installation Training Available at Andrew Institute

1.0 Introduction

This bulletin provides a quick reference approach to establishing communication between the ATC300-1000 Teletilt® controller and a local PC/laptop (see Bulletin 639544 for the complete user guide). Generally, the IP address is temporarily configured on the PC/laptop to be compatible with the ATC300-1000 controller.

Andrew Solutions has developed an IP configuration tool to provide a safe and easy method for configuring the IP addressing on the PC/laptop. This bulletin covers setup using the Andrew IP Config Tool program.

Pre-Installation Notes:

- The Andrew IP Config Tool is compatible with Windows® 2000 and Windows® XP.
- Andrew recommends that you register online to receive notifications for updates made to the software file. It is also recommended that the Andrew web site be checked every 30 days for updated software/documentation.
- **Both +24 and -48 V dc connections for the power supply module are available. For proper operation, ensure wires are connected with correct polarity.**
- Before installing antennas equipped with actuators to the tower, each actuator should be connected to the controller and tested for proper operation. A quick reference guide is included with the ATC300-1000 controller or Teletilt antenna.
- It is recommended that prior to antenna installation on the tower, the serial number, antenna type, and location where the antenna will be installed on the tower be recorded on the Site Configuration Worksheet provided.

2.0 Using Andrew IP Config Tool to Access Controller

1. Download Andrew IP Config Tool.

- From the Andrew Products tab on www.commscope.com, click on **Antennas→Teletilt RET System→ Downloads→RET Controller Software and Firmware**. Scroll down to the **ATC300-1000 Teletilt® Rack Mount Controller** link.

- Download these files to a local drive:

ATC300-1000 software,
IP Configuration Software tool,
Documentation from the links provided.

- Unzip the **ipconfigtool.exe** file.

Double click this file and follow the on-screen prompts to complete the Andrew IP Config Tool installation.

2. Use Andrew IP Config Tool to set up a new connection on the local computer.

- Double-click on the IP Config Tool icon that was placed on the computer's desktop during installation.
- To temporarily change the IP settings on the local PC/laptop, follow these steps (Figure 2-1):
 1. Click on **New IP Info** tab.
 2. Click on **Local Area Connection**.
 3. Enter a new IP address that is one digit lower than the controller's default setting:
i.e. **192.168.255.141**.
 4. Click **Apply new IP configuration** button.
 5. New IP settings shown, replacing the original IP settings on the local PC/laptop.

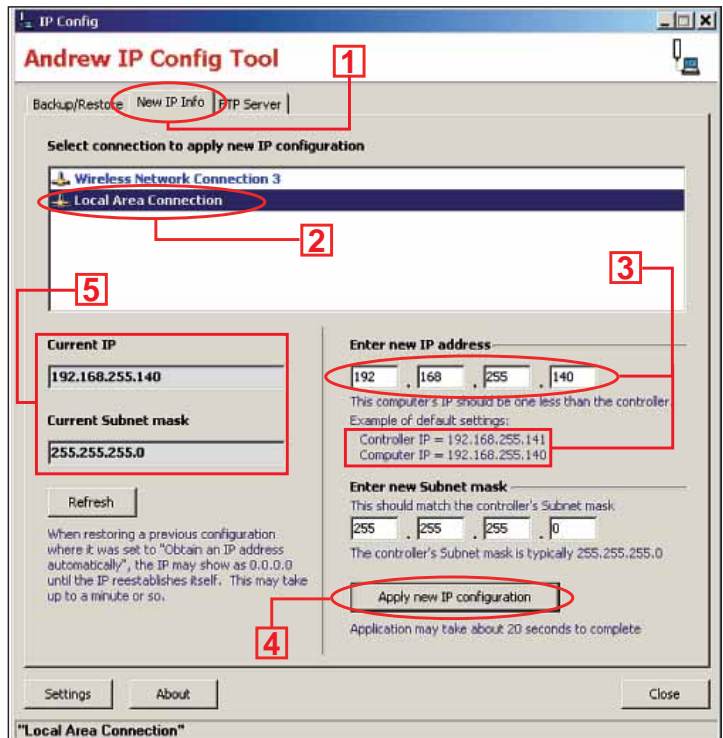


Figure 2-1. Using The IP Config Tool To Connect The Controller To The Network.

3. Create a backup file for future sessions.

1. Click on **Backup/Restore** tab (Figure 2-2).
2. Click on the **Backup** button.
3. Type in a name for the new IP backup file. (Example: Cellsite name where controller resides)
4. Click on **OK**.

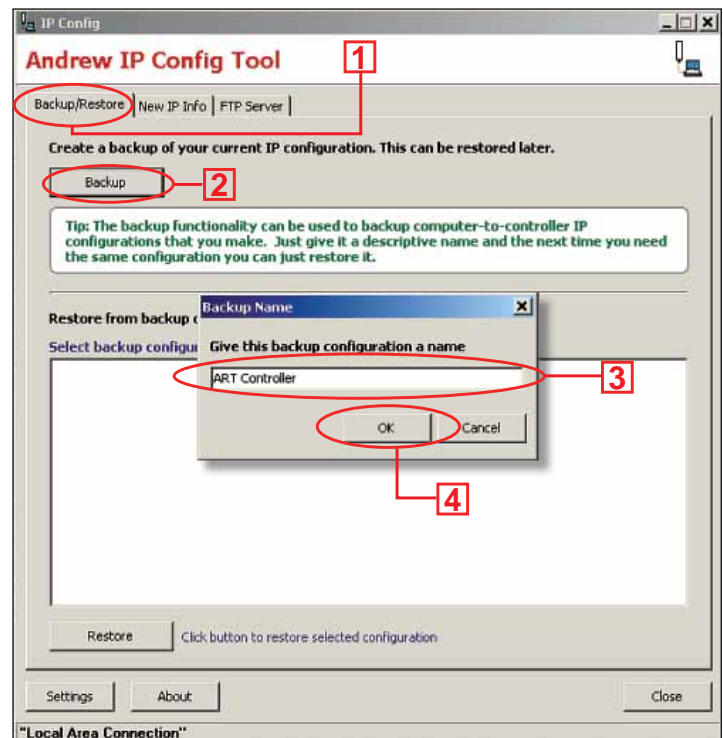


Figure 2-2. Creating A Backup File.

4. Use Andrew IP Config Tool to access the controller.

- Verify that the controller is powered up and connected to the computer's Ethernet port using the Ethernet crossover cable provided. To start a new session, double click on the IP Config Tool icon on the computer's desktop.
- To restore temporary IP settings on the PC/ laptop that were saved in the IP Config Tool, follow these steps (Figure 2-3):
 1. Click on **Backup/Restore** tab.
 2. Select the **Backup** file.
 3. Click on **Restore**.
 4. Backup IP settings are restored to a local computer.

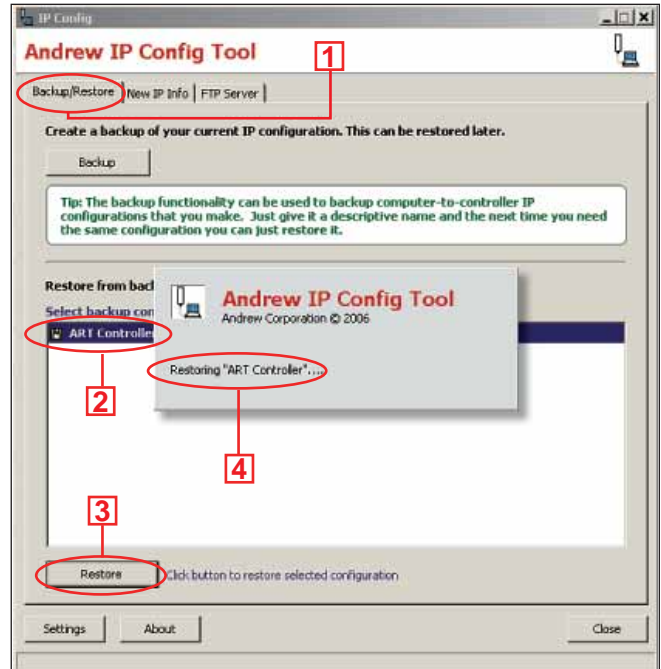


Figure 2-3. Using The IP Config Tool To Access The Controller.

- Open an Internet browser (Netscape and Mozilla are not supported). See Figure 2-4. If the ATC300-1000 controller interface does not automatically appear in the Internet browser, type in the controller's IP address into the URL address window, and click on Go. The factory default IP address for the ATC300-1000 controller is: 192.168.255.141.
- After verifying that the controller's interface can be viewed in the Internet browser, the Internet browser should be minimized while using the IP Config Tool to upload software updates.

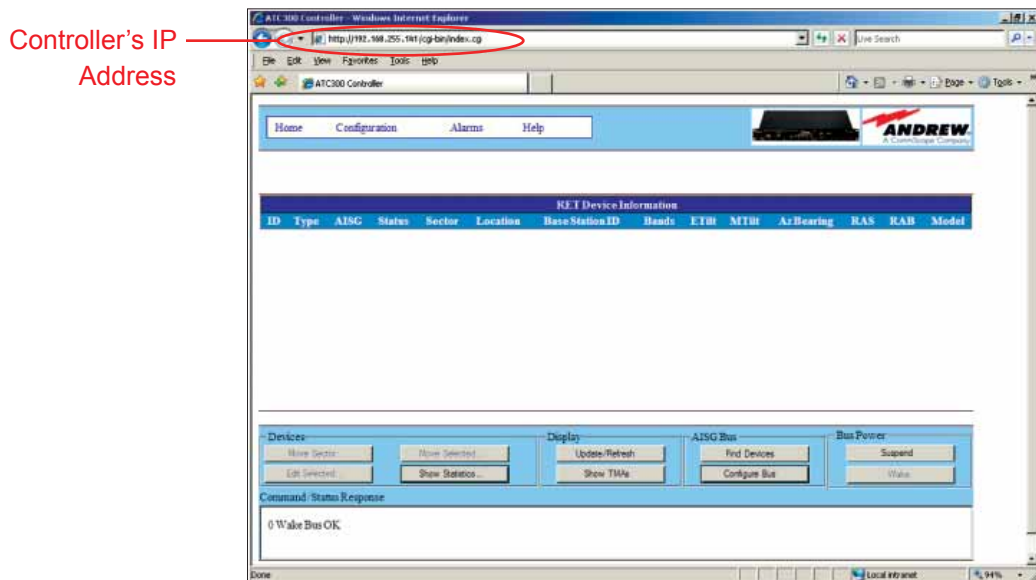


Figure 2-4. ATC300-1000 Controller Main Interface Screen.

3.0 Configuring the Controller's Static IP Address

See Section 7.1.1 in the Operations Manual, Bulletin 639544, for instructions to configure the static IP on the ATC300-1000 Controller.

4.0 Using Andrew IP Config Tool to Upload Software Updates to the Controller

Upload the software file update to the controller:

ATC300_*.tar Controller software file with bundled antenna definition file and Andrew actuator firmware

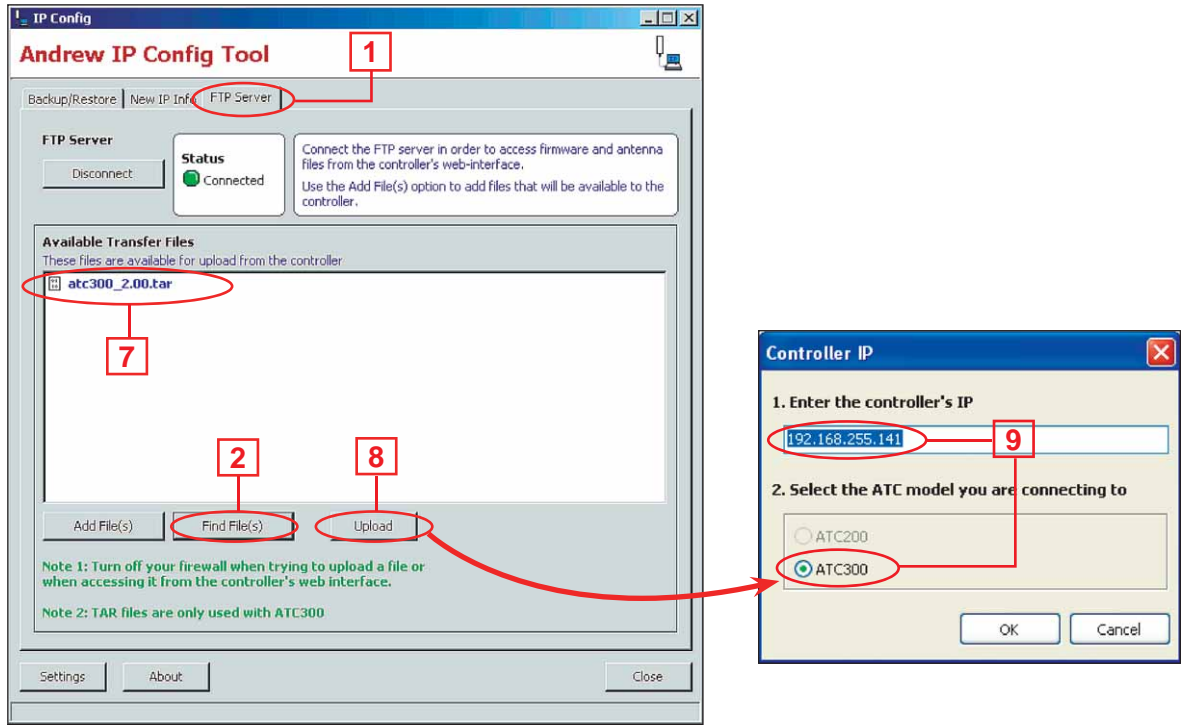
- Asterisk (*) in filename represents the version number. Use the file with the highest number preceding the file extension for each type file to ensure the latest version data is uploaded.
- *The controller will not recognize updates made to the 'ATC300_*.tar' file until it has been rebooted.*

Note: See Bulletin 639544, Section 10, for uploading software files to the actuator.

Follow steps 1 through 9 (Figure 2-5 on the next page) to upload software updates to the controller.

1. Click on **FTP Server** tab on the IP Config main screen. See Screen 1.
2. Click **Find Files** to open the Find Files dialog box shown in Screen 2.
3. Click **Find Files** to search for controller files. See Screen 2.
4. Select files. (Use the latest version.)
5. Click **Add Selected Files**.
6. Click on **Finish** to return to Screen 1, and view files available for upload.
7. To upload files (Screen 1), select the file.
8. Click on **Upload**.
9. Enter IP address for active controller in the **Controller IP** dialog, choose **ATC300** model and click **OK**.

Screen 1



Screen 2

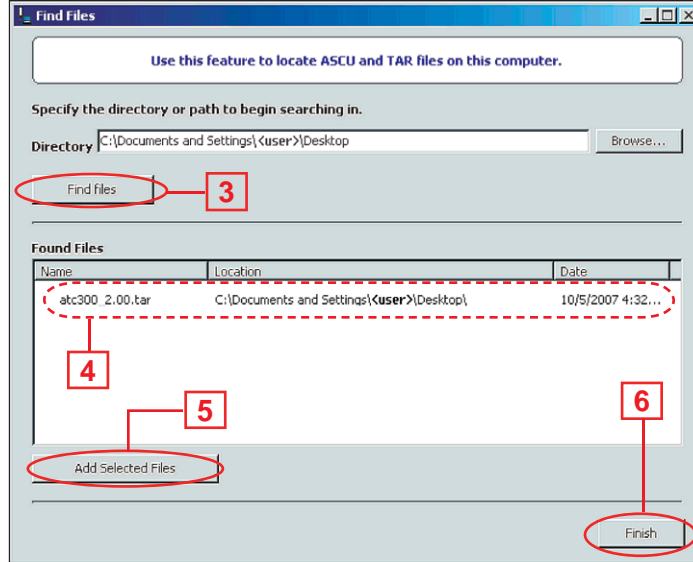


Figure 2-5. Using IP Config Tool To Update Controller Software.

See steps 10 through 12 (Figure 2-6) to complete upload:

10. The software file is uploaded through the Internet browser, which opens the ATC300-1000 operating window on the PC/laptop.
11. Click on **Back** (Screen 1) to go to the controller’s screen displaying the **Reboot** button (Screen 2).
12. Click **Close** on the ATC300-1000 browser window.
13. When access to the controller is no longer needed, the IP Config Tool can be closed to restore the computer to its original IP settings.

* Note: The **Reboot** button is used to reboot the controller. This is required when firmware updates are installed for the controller.

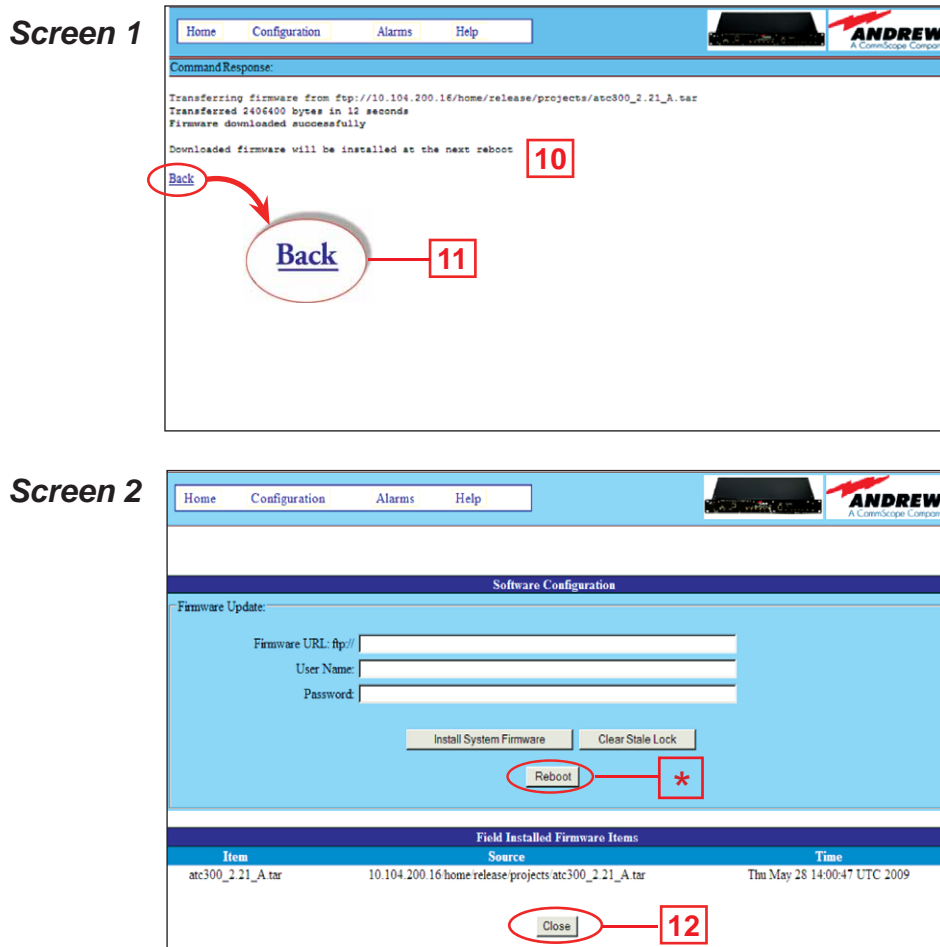


Figure 2-6. Finishing Software Upload.

See www.commscope.com for complete ATC300-1000 User Guide, Bulletin 639544.

Andrew Solutions

Customer Support Center

North America: +1-800-255-1479, Option 1

International: +1-779-435-6500, Option 1