



ANDREW®

A CommScope Company

ATC200-1000

Teletilt® Control System

Equipment Installation Overview



WARRANTY NOTICE

Proper installation procedures must be followed when installing and operating RET equipment. Failure to assure installations are done properly by trained installation personnel and to follow procedures discussed in this bulletin may cause warranty for such products to be void.

Andrew requires that all RET installations be pre-tested and configured prior to installation. Failure to conduct pre-test and pre-installation procedures defined by Andrew will void warranty.

SAFETY NOTICE

The installation, maintenance, or removal of an antenna requires qualified, experienced personnel. Andrew installation instructions are written for such installation personnel. Antenna systems should be inspected once a year by qualified personnel to verify proper installation, maintenance, and condition of equipment.

Andrew disclaims any liability or responsibility for the results of improper or unsafe installation practices.



Do not install near power lines. Power lines, telephone lines, and guy wires look the same. Assume any wire or line can electrocute you.



Do not install on a wet or windy day or when lightning or thunder is in the area. Do not use metal ladder.



Wear shoes with rubber soles and heels. Wear protective clothing including a long-sleeved shirt and rubber gloves.

Installation Training Available at Andrew Institute

1. Equipment installation options

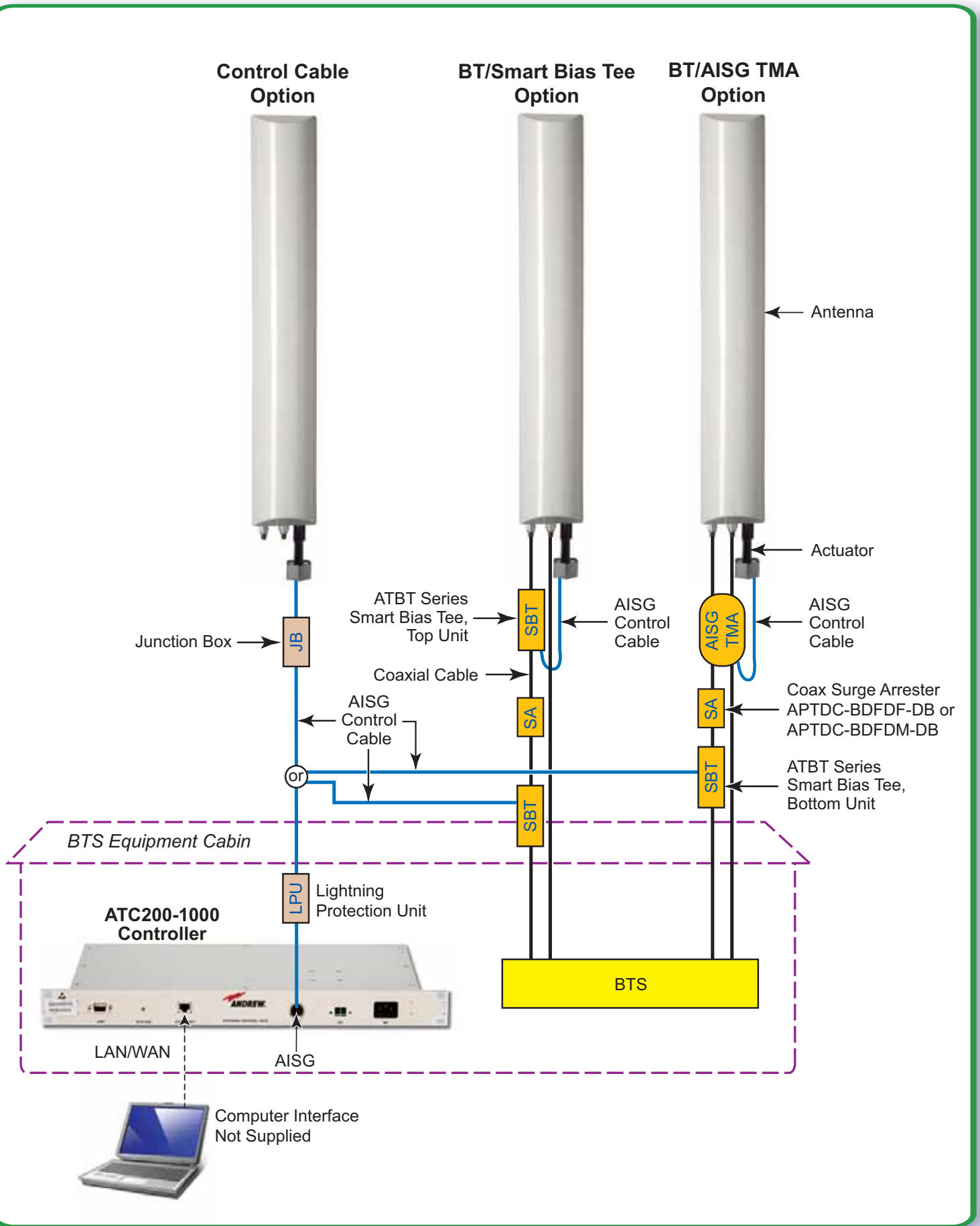


Figure 1. ATC200-1000 Teletilt® Controller System Connection Options.

2. Controller program startup and device scan

Pre-Installation Notes:

- Connect the local PC to the controller using the Ethernet crossover cable.
- Before installing antennas equipped with actuators to the tower, each actuator should be connected to the controller and tested for proper operation.
- Andrew recommends that you register online to receive notifications for updates made to the software and antenna definition file. It is also recommended that the Commscope web site be checked every 30 days for updated software/documentation.
- **If using the 48V power connection, ensure wires are properly connected. Reversal of wire connection can cause permanent damage to the controller.**

1. Controller access.

- Refer to Bulletin 639561 for instructions about using the IP Config Tool to reconfigure the local PC/laptop's IP address for access to the ATC200-1000's main operating interface.
- Type the controller's IP address into Internet browser URL window. The factory default IP address is 192.168.255.141. See screen below.

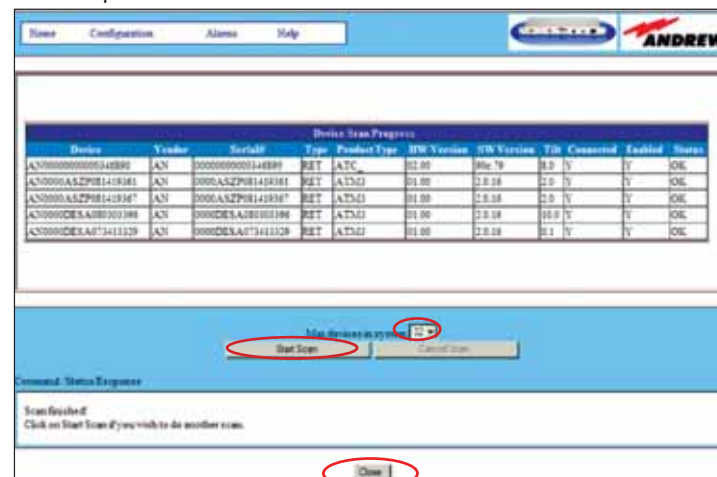


- Click on **Go** (or press **Enter** on the keyboard) to access the ATC200-1000 Controller main interface screen (below).



2. Device search. Click on **Find Devices**. See screen above.

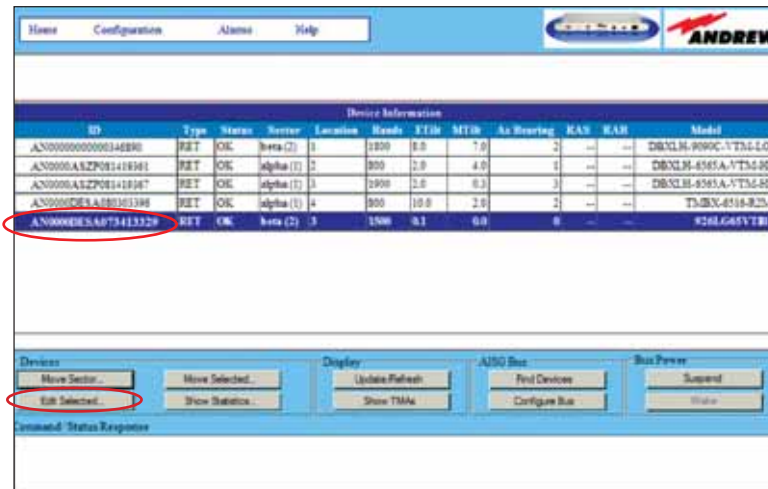
- Select number of known devices on **Max devices** drop down list, below.
- Click on **Start Scan**, as seen on screen below.
- After the scan is complete, click on **Close**.
- If an antenna/actuator has been removed or added to the site, a new scan is required.



3. Device configuration and adjustments

3a. Device configuration.

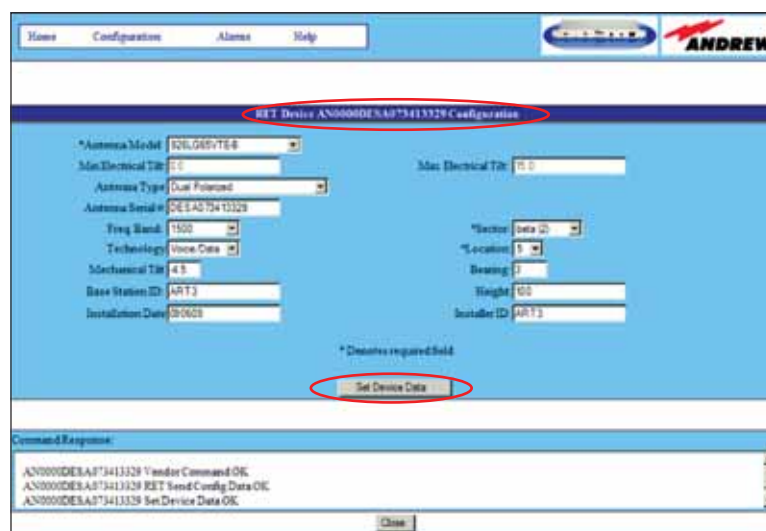
Select appropriate device to be configured and click on **Edit Selected**.



3b. Make appropriate selections and text entries on screen below.

- To receive commands from the controller a device must be configured to provide specific information about the antenna and its location on site.
- Factory installed actuators are pre-configured to include the antenna model number, antenna type, and antenna serial number.
- The remaining fields (Installation Date, Base Station ID, Mechanical Tilt, Technology, Freq. Band, Sector, Location, Bearing, Height, and Installer ID) will need to be configured.
- After entering data, click on **Set Device Data**.

Note: Click on **Close** to return to the controller's main screen when device configuration is complete.



Note: See www.commscope.com for complete user guide, Bulletin 639514.

Andrew, A CommScope Company

Customer Support Center

North America: +1-800-255-1479,
Option 1

International: +1-779-435-6500,
Option 1

www.commscope.com/andrew

Visit our Web site at www.commscope.com or contact your local Andrew representative for more information.
© 2009 CommScope, Inc. All rights reserved.

Andrew is a trademark of CommScope. All trademarks identified by ® or ™ are registered trademarks or trademarks, respectively, of CommScope. This document is for planning purposes only and is not intended to modify or supplement any specifications or warranties relating to Andrew products or services.

4a. Device adjustments for a single antenna.

- To change electrical downtilt on a single antenna, select the antenna actuator that will be tilted, and click **Move Selected** (screen 1).
- Enter the new electrical tilt angle and click on **Set Tilt** (screen 2).

4b. Device adjustments for a group of antennas.

Click on a device that is to be included in the sector move, and click **Move Sector**. See screen 1, below.



4c. Adjusting the downtilt angle on a group of antennas.

- As shown on the screen below, click on the **Additional** models, one at a time, to be included in the sector move.
- Click on **Add**. (Double-clicking on the model will also add it to the group for the sector move.)
- Enter the new electrical tilt angle. Review the **Electrical Tilt** range to verify that the new tilt angle entered is valid for the antenna model. Angles may be entered as whole degrees or as a combination of whole degrees and tenths of a degree (Ex: 5.0 or 5.5).
- Click on **Set Tilt**.

