



ATC200-1000

Teletilt® Control System

Computer Interface Setup



WARRANTY NOTICE

Proper installation procedures must be followed when installing and operating RET equipment. Failure to assure installations are done properly by trained installation personnel and to follow procedures discussed in this bulletin may cause warranty for such products to be void.

Andrew requires that all RET installations be pre-tested and configured prior to installation. Failure to conduct pre-test and pre-installation procedures defined by Andrew will void warranty.

SAFETY NOTICE

The installation, maintenance, or removal of an antenna requires qualified, experienced personnel. Andrew installation instructions are written for such installation personnel. Antenna systems should be inspected once a year by qualified personnel to verify proper installation, maintenance, and condition of equipment.

Andrew disclaims any liability or responsibility for the results of improper or unsafe installation practices.



Do not install near power lines. Power lines, telephone lines, and guy wires look the same. Assume any wire or line can electrocute you.



Do not install on a wet or windy day or when lightning or thunder is in the area. Do not use metal ladder.



Wear shoes with rubber soles and heels. Wear protective clothing including a long-sleeved shirt and rubber gloves.

Installation Training Available at Andrew Institute

This bulletin provides a quick reference approach to establishing communication between the ATC200-1000 Teletilt® controller and a local PC/laptop (see Bulletin 639514 for the complete user guide). Generally, the IP address is temporarily configured on the PC/laptop to be compatible with the ATC200-1000 controller. Andrew Wireless Services has developed an IP configuration tool to provide a safe and easy method for configuring the IP addressing on the PC/laptop. This bulletin covers setup using the Andrew IP Config Tool program.

Pre-Installation Notes:

- The Andrew IP Config Tool is compatible with Windows® 2000 and Windows® XP.
- Andrew recommends that you register online to receive notifications for updates made to the software and antenna definition file. It is also recommended that the CommScope web site be checked every 30 days for updated software or documentation.
- **If using the 48V power connection, ensure wires are properly connected. Reversal of wire connection can cause permanent damage to the controller.**
- Before installing antennas equipped with actuators to the tower, each actuator should be connected to the controller and tested for proper operation. A quick reference guide is included with the ATC200-1000 controller or Teletilt antenna.
- It is recommended that prior to antenna installation on the tower, the serial number, antenna type, and location where the antenna will be installed on the tower be recorded on the Site Configuration Worksheet provided.

Using Andrew IP Config Tool to Access Controller

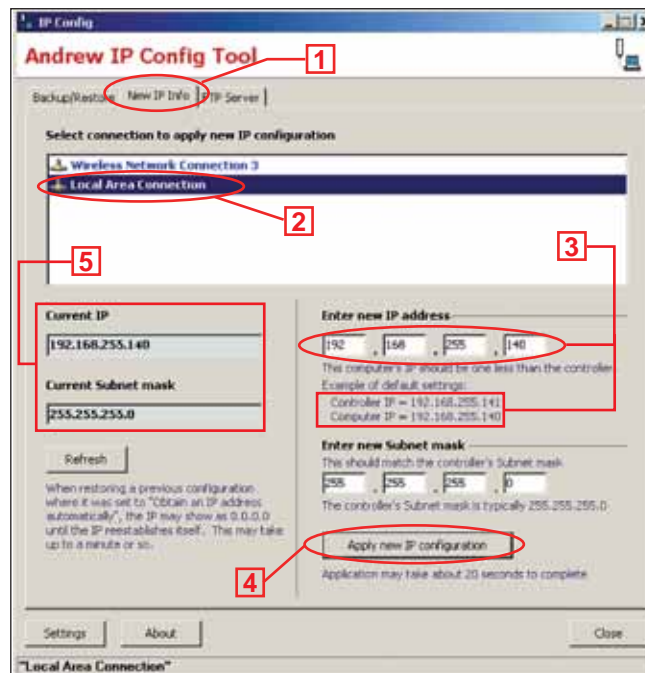
1. Download Andrew IP Config Tool.

- From the **Andrew Products** tab on www.commscope.com, click on **Antennas**→**Base Station Antenna Systems**→**Teletilt RET System**→**Downloads**→**Teletilt Software, Firmware, Tools, and Manuals** as seen on the screen below. The ATC200-1000 software, IP Configuration Software Tool, and Antenna Definition files can be downloaded from the links provided.
- Unzip the ipconfigtool.exe file. Double click this file and follow the on-screen prompts to complete the Andrew IP Config Tool installation.

The screenshot shows the Andrew website interface. The top navigation bar includes 'Company', 'Andrew', 'RFC / Broadband', 'SYSTEMS', and 'Support'. Below this is a secondary navigation bar with 'Products', 'Industry Solutions', 'Support & Documentation', 'About Us', 'Partners & Services', and 'Product Resource'. The main content area features a banner for 'Andrew joins CommScope' with the tagline 'Creating a global leader in infrastructure solutions for communications networks'. A breadcrumb trail reads: 'Home > Product > Antennas > Base Station Antenna Systems > Teletilt RET System'. The page title is 'Teletilt® RET System'. Under the heading 'Downloadable Firmware, Software, Tools, and Manuals', there is a paragraph of text and a 'PLEASE NOTE' box. At the bottom, there is a link for 'Antenna Definition Files' and a link for 'Teletilt® Software, Firmware, Tools, and Manuals'. A red circle highlights the latter link, with a red arrow pointing to it from the text 'Click on Teletilt Software, Firmware, Tools, and Manuals.'

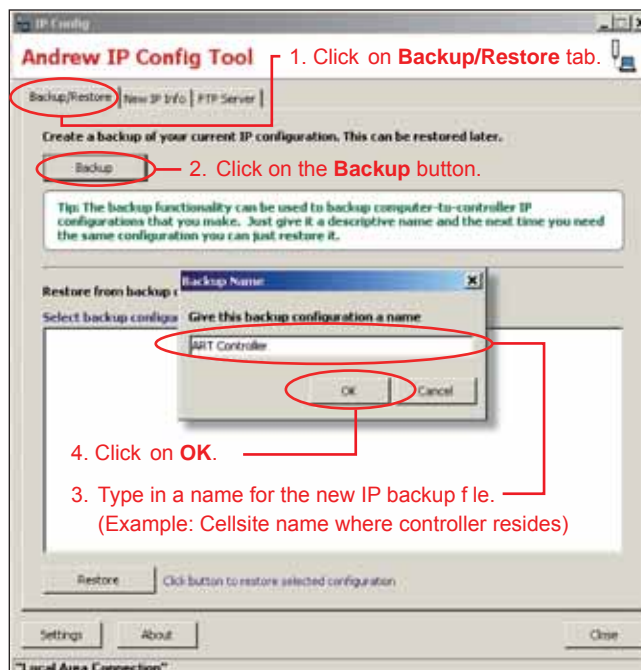
2. Use Andrew IP Config Tool to set up a new connection on the local computer.

- Double-click on the **IP Config Tool** icon that was placed on the computer's desktop during installation.
- Follow the directions illustrated on the following two screens to temporarily change the IP settings on the local PC/laptop.
 1. Click on **New IP Info** tab.
 2. Click on **Local Area Connection**.
 3. Enter a new IP address that is one digit lower than the controller's default setting.
 4. Click **Apply new IP configuration** button.
 5. New IP settings shown, replacing the original IP settings on the local PC/laptop.



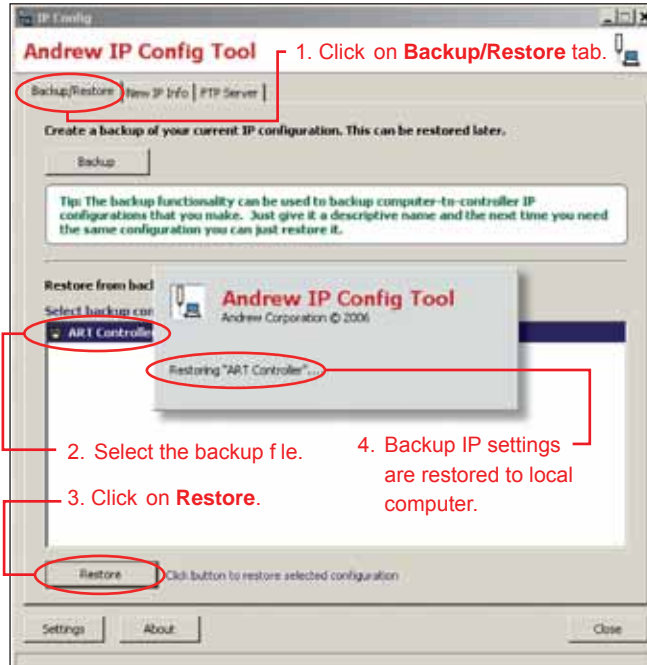
3. Create a backup file for future sessions.

- Follow the steps illustrated below.



4. Use Andrew IP Config Tool to access the controller.

- Verify that the controller is powered up and connected to the computer's Ethernet port using the Ethernet crossover cable provided. To start a new session, double-click on the IP Config Tool icon on the computer's desktop.
- Follow the directions illustrated on the screen shown below to restore temporary IP settings on the PC/laptop that were saved in the IP Config Tool.



- Open an Internet browser (Netscape and Mozilla are not supported). If the ATC200-1000 controller interface does not automatically appear in the Internet browser, type in the controller's IP address into the URL address window, and click on **Go**. The factory default IP address for the ATC200-1000 controller is: 192.168.255.141.
- After verifying that the controller's interface can be viewed in the Internet browser, the Internet browser should be minimized while using the IP Config Tool to upload software updates.

Using Andrew IP Config Tool to Upload Software Updates to the Controller

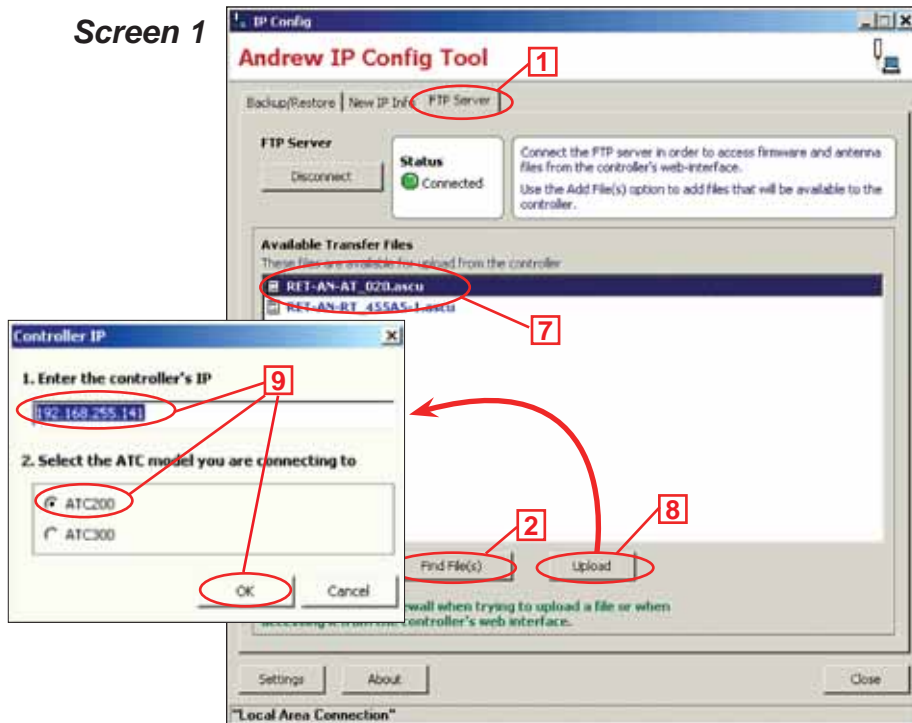
1. The following software files can be uploaded to the controller:

- RET-AN-RT_*.ascu Controller Software Interface File
 - RET-AN-KR_*.ascu Controller Operating Kernel File
 - RET -AN-AT_*.ascu Antenna Definition File
- Asterisk (*) in filename represents the version number. Use the file with the highest number preceding the file extension for each type file to ensure the latest version data is uploaded.
 - Note that ATM200 actuator software can only be uploaded to the actuators after a **Device Search** has been performed. See Bulletin 639513ATC200-1000 Teletilt Control System Equipment Installation Overview Quick Guide, for the **Device Search** procedure.

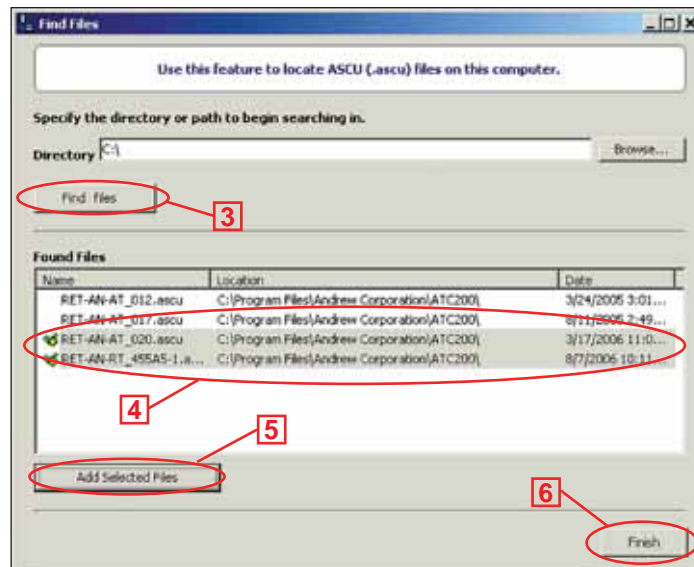
2. Follow steps 1 through 9 illustrated on the following screens to upload software updates to the controller.

1. Click on **FTP Server** tab on the IP Config main screen. See Screen 1.
2. Click on **Find Files** to open the Find Files dialog box shown in Screen 2.
3. Click on **Find files**. See Screen 2.
4. Select latest version file(s).
5. Click **Add Selected Files**.
6. Click on **Finish** to return to Screen 1, and view uploaded software updates.
7. To upload files (Screen 1), click on one file at a time.
8. Click on **Upload**.
9. Enter IP address for active controller and click **OK**.

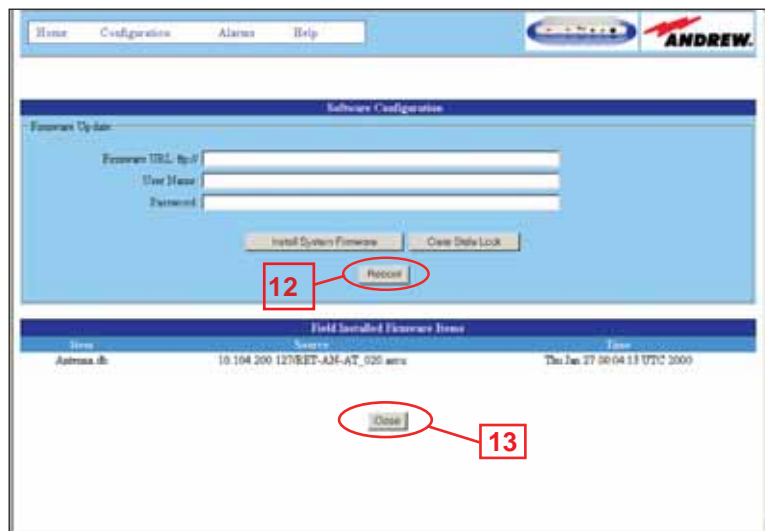
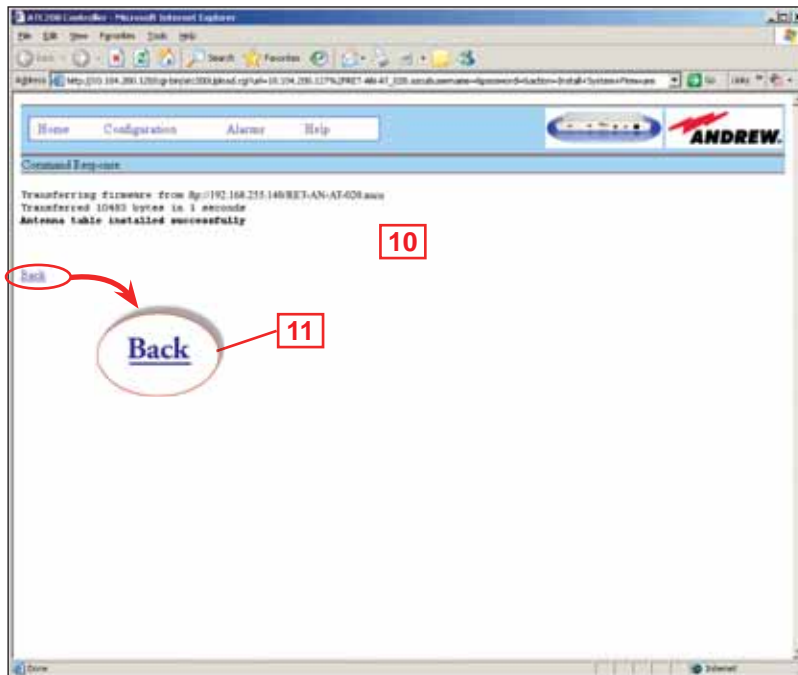
Screen 1



Screen 2



10. The software file is uploaded through the internet browser, which opens the ATC200-1000 operating window on the PC/laptop.
11. Click on **Back** to see the uploaded antenna definition files list on the controller's **Software Configuration** screen displaying the **Reboot** button.
12. Antenna definition files take affect instantly after upload, e.g. (RET-AN-AT_*.ascu).
If uploading controller operating firmware, you must reboot for updates to take affect, e.g. (RET-AN-RT_*.ascu).
13. Click on **Close**.



Note: See www.commscope.com for complete user guide, Bulletin 639514.

Andrew, A CommScope Company

Customer Support Center

North America: +1-800-255-1479,
Option 1

International: +1-779-435-6500,
Option 1

www.commscope.com/andrew

Visit our Web site at www.commscope.com or contact your local Andrew representative for more information.

© 2009 CommScope, Inc. All rights reserved.

Andrew is a trademark of CommScope. All trademarks identified by ® or ™ are registered trademarks or trademarks, respectively, of CommScope. This document is for planning purposes only and is not intended to modify or supplement any specifications or warranties relating to Andrew products or services.