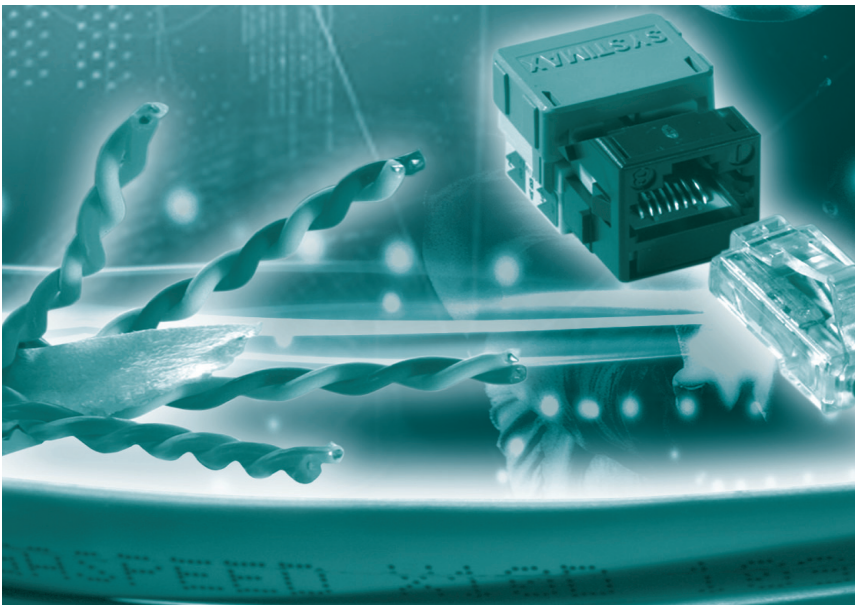




SYSTIMAX® GigaSPEED® X10D and LazrSPEED® Solutions from CommScope Makes SWIFT Internal LAN More Flexible and Reliable

10G copper and fiber cabling infrastructure ensures efficient services at headquarters in La Hulpe



In 1973, more than 230 banks in 15 countries joined forces and set up SWIFT (Society for Worldwide Interbank Financial Telecommunication). Their aim was to ensure that vital messages and transactions between them were secure, automated and standardized. Today, SWIFT provides messaging services and interface software to over 8,000 financial institutions, including banks, brokers and investment managers in 207 countries. In order to prepare its headquarters at La Hulpe, Belgium, to support the ever-increasing voice- and data traffic as well as future applications requiring high bandwidth, SWIFT decided to recable its entire building.

The organization now has a staff of 2,000 people, half of them in its headquarters at La Hulpe. The number of messages sent via the SWIFT network infrastructure every day is around 11 million - a figure that is growing by more than 10 percent per year.

"Since the service we provide to financial institutions worldwide is business critical, we can't allow any downtime or loss of data," said Fabrizio Scacchitti, who is responsible for installing the infrastructure for the SWIFT internal networks and company LANs for the headquarters and

SYSTIMAX®
SOLUTIONS

European offices. "Top-quality LAN infrastructure is absolutely essential. So, when the time came to re-cable our headquarters, we worked with our cabling provider, Fabricom, to find the best possible solution. The solution we decided on was a combination of SYSTIMAX® LazrSPEED® fiber and GigaSPEED® X10D copper cabling. Both types can support 10-Gigabit Ethernet, with the GigaSPEED X10D cabling providing four-connector channels up to 100 meters."

The laser optimized LazrSPEED Solution supports 10G connections over distances up to 300 meters. The GigaSPEED X10D Solution complies with the latest TIA Category 6A and ISO Class E_a cabling channel requirements and is compliant with the latest IEEE 10GBASE-T requirements. These include low insertion loss and enhanced suppression of all types of crosstalk. The complete solution, including cable, connectors and patching hardware, combines the ease of installation and flexibility of UTP (unshielded twisted pair) cabling with support for 10G Ethernet, providing the high level of performance, flexibility and cost effectiveness that is required.

"Flexibility is central to our business culture," explained Fabrizio Scacchitti. "At La Hulpe, changing customer needs, new projects and career development of employees, result in an average of 800 staff re-locations a year. The new infrastructure provides each employee with six connection points, four of which are in constant use for voice and data links; the other two are available for future applications."

Making a success of SWIFT's cabling upgrade required close cooperation between all the parties involved. These included CommScope the manufacturer; Anixter the distributor and Fabricom GTI the SYSTIMAX BusinessPartner that installed the new cabling infrastructure.

To support its BusinessPartner, Fabricom, CommScope provided staff with in-depth cabling expertise. Working together with Anixter, this team designed a cabling infrastructure with nodes in each office. Cables are connected from these nodes to 2,900 information outlets throughout the headquarters.

"This approach gave us savings in the amount of cable used, which in turn reduced cost," said Fabrizio Scacchitti. "So we could choose the most effective solution while still remaining in line with our original cost estimate."

The La Hulpe headquarters are housed in a five-floor Art Deco building. Fabricom re-cabled all of this as part of the complete refurbishment. The project's new cabling included connections to telecommunications rooms, test rooms, computer rooms and network gateways.

In total, nearly 190kms of GigaSPEED X10D copper cabling were installed. To complement this, SYSTIMAX LazrSPEED multimode fiber cables provide backbone connections between the communications and computer rooms around the building. These fiber links provide 10 Gb/s connections between the SYSTIMAX patching hardware and cabinets in the communications and computer rooms.

"In view of the ever-increasing speed of technological development, availability of the high bandwidth LAN infrastructure is crucial for SWIFT," said Fabrizio Scacchitti. "The 10-gigabit transmission speed offered by the GigaSPEED X10D Solution is not yet being used in full, but in terms of the future, it is enormously important to us. In 10 to 20 years' time, the cabling must still be able to support new IT systems and applications with ease – using CommScope is our guarantee of this."

During the installation project, Anixter's distribution centers played a key role in meeting deadlines. With inventories in excess of US\$300 million, these centers can meet the toughest cabling delivery lead times in any part of the world. Their cabling specialists also provide expertise in selecting and configuring the right equipment.

Commenting on the installation, Philippe Thiebaut, Sales Director, SYSTIMAX Solutions, CommScope, Belgium and Luxembourg said: "SWIFT is responsible for one of the world's most important financial communications systems. By working closely with them and our partners, we were able to deliver the very high performance and reliability they must have from their cabling infrastructure. Equally important, the cabling allows SWIFT to change and evolve to meet its internal office needs without concerns about connectivity."