



## Uniprise® Solutions

# ReadyPATCH™ Cu Pre-Terminated Copper Solutions

Solution Guide

# Uniprise® ReadyPATCH™ Cu Pre-Terminated Copper Solutions



**12 leg 6x2 SwitchPack  
for use in switch harness**

For Data Center infrastructure needs, particularly Tier I and Tier II Data Centers, Uniprise® ReadyPATCH™ Cu pre-terminated copper solutions provide the right level of technology and the perfect combination of solution benefits.

ReadyPATCH Cu solutions are equipped with modular UTP connectivity systems, and each of these high-density systems comes factory-connectorized and factory-tested. As a result, installer work is simplified, and component connections inside traffic-sensitive Data Centers are dramatically increased. Since ReadyPATCH Cu solutions also offer a unique combination of product quality, performance, reliability and price, they present an excellent choice for Data Center support.

ReadyPATCH Cu pre-terminated copper cable harnesses are easy to use and reliable. They deliver hassle-free installations in a fraction of the time required by traditional cabling methods, and they ensure that your network is up and running quickly. Through the innovation of modular design, these solutions improve cable management and scalability, and since each harness comes pre-terminated, the variable costs of termination, troubleshooting and rework are balanced out. ReadyPATCH Cu solutions arrive factory-tested and ready to install, backed by a 20-year warranty and CommScope's industry-leading connectivity experience.

## UNIPRISE ReadyPATCH Cu APPLICATIONS:

### Servers:

For large-scale server deployments, server harnesses can provide a simple, clutter-free, quick installation. They are ideal for Data Center deployment with CommScope® Server Cabinets.

### Switches:

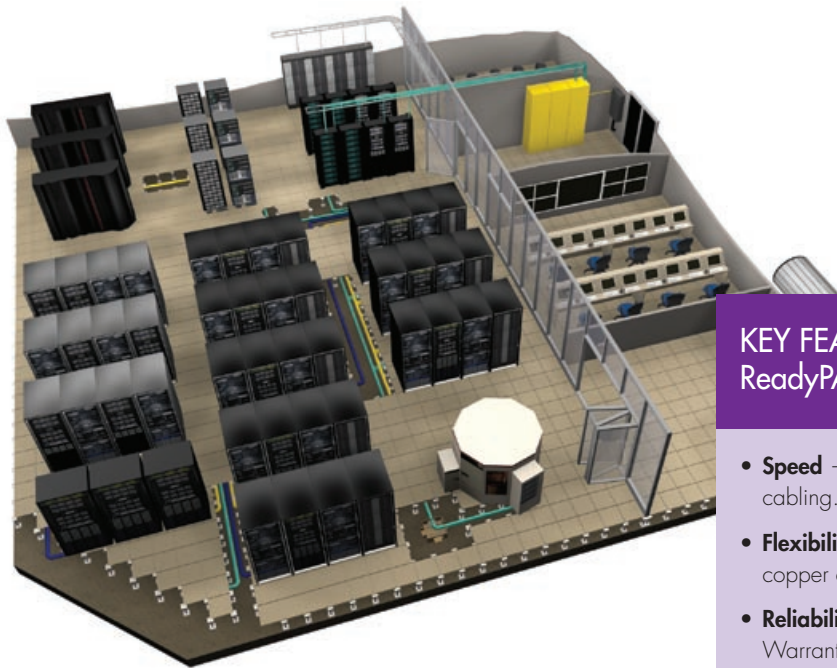
Linking network switch ports with network connectors, switch harnesses improve cable management and increase the flexibility of cross-connect fields. CommScope's SwitchPack connectivity makes these harnesses ideal for Data Centers and telecommunication rooms with high-density switch chassis.

### Intra-cabinet:

Connecting electronic equipment within a single cabinet, intra-cabinet harnesses optimize cable management in this sensitive, active environment. They are ideal for server-to-server and server-to-switch deployments.

### Infrastructure:

Serving both horizontal and vertical deployments, infrastructure harnesses typically feature modular connectors on each end. They are ideal for small to large Data Centers, telecommunication rooms, zone wiring environments and intelligent building applications.

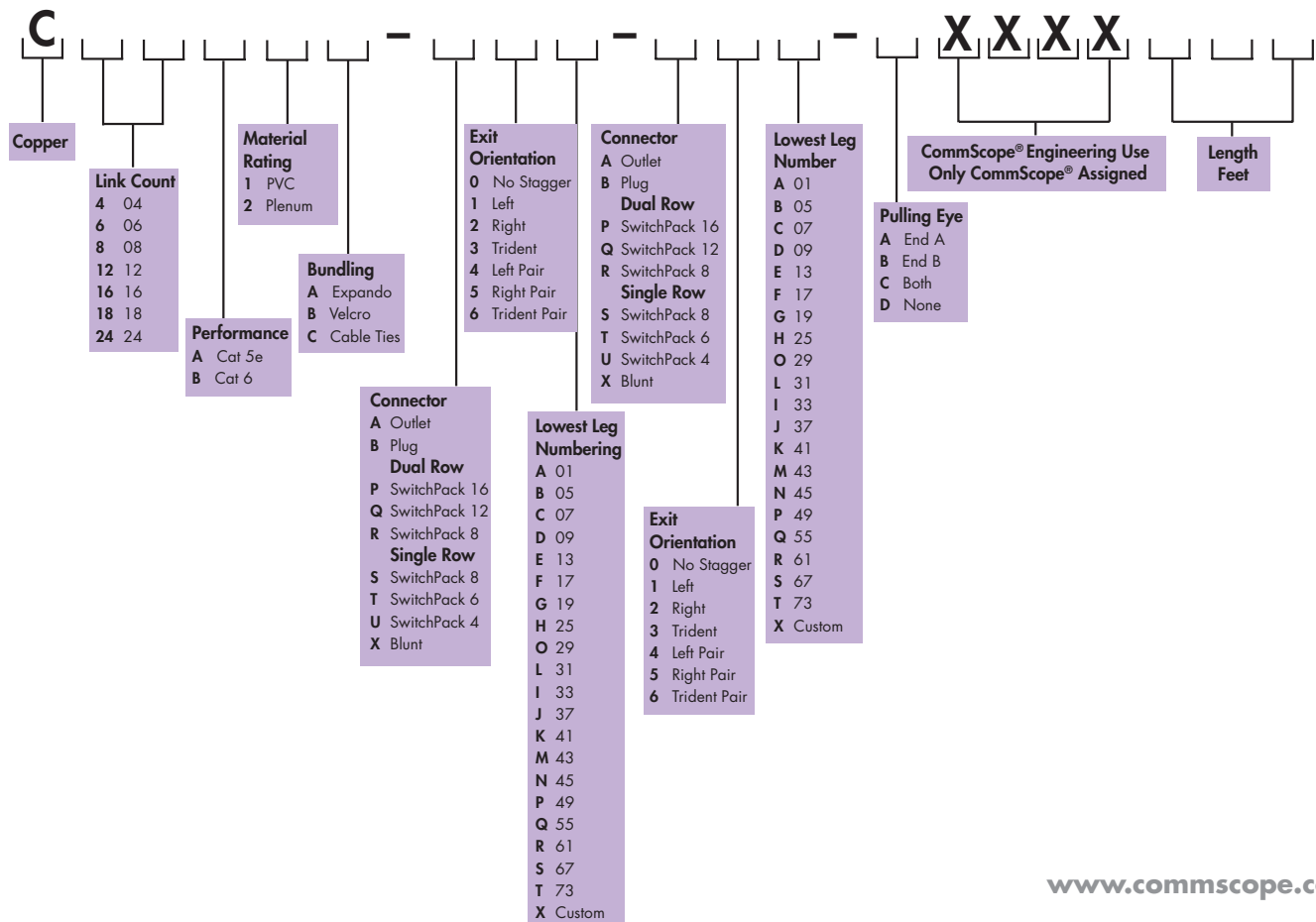


## KEY FEATURES AND BENEFITS OF ReadyPATCH™ Cu FOR DATA CENTERS:

- **Speed** — install up to eight times faster than with traditional cabling.
- **Flexibility** — choose from multiple options for a variety of copper environments.
- **Reliability** — count on a 20-year Extended Product Warranty and industry-best Applications Assurance.
- **Scalability** — plan for and install the exact number of ports you need now; add further harnesses as you need them in the future.
- **Cost-control** — enjoy pricing stability through minimized variable costs on termination, troubleshooting and rework.
- **Security** — decrease installation time in the critical Data Center spaces.

## ReadyPATCH™ Cu Copper Harness Configurator

CommScope is committed to understanding your specific design needs and tailoring the right pre-terminated copper harnesses for you.





[www.commscope.com](http://www.commscope.com)

Visit our Web site or contact your local CommScope representative for more information.

© 2011 CommScope, Inc. All rights reserved.

All trademarks identified by ® or ™ are registered trademarks or trademarks, respectively, of CommScope, Inc.

This document is for planning purposes only and is not intended to modify or supplement any specifications or warranties relating to CommScope products or services.

05/11