



SYSTIMAX® Solutions

InstaPATCH® ZERO Solution Guide

Rapid Server Deployment
and Change Management

North, South and Central Americas

As data centers face ever-increasing IT demands, growth demands and evolving technologies, IT Administrators, Facility Managers and Data Center Managers are challenged with responding to the rapid growth of their facilities and the businesses they support. Furthermore, rising operating expenses are driving data center operators to maximize their utilization of space, power and cooling through higher density server deployments, which introduces the challenge of managing larger bundles of cabling within the server cabinet.



To address these challenges, CommScope, in collaboration with IT enclosure industry leader Rittal® Corporation, developed the SYSTIMAX® InstaPATCH® ZERO server cabinet solution. Comprised of a 600 mm wide server cabinet, factory configured cord cassettes with pre-managed slack loops, and a mini rack mounted above the cabinet, InstaPATCH ZERO provides U/UTP and fiber connectivity in an integrated, modular system that enables rapid, plug and play server cabinet deployment and facilitates best practices in intra-cabinet cable management.

Deployment of InstaPATCH ZERO is a two-step process. Simply roll in a pre-configured cabinet and plug the cord bundles into the overhead patch panel. Once the servers are installed in the cabinet, they can be connected instantly by pulling the patch cord out of the cassette to complete the patch. When your server needs change, InstaPATCH ZERO's pre-terminated modularity enables you to slide in additional cassettes or quickly decommission and replace an entire cabinet.

In addition, the factory configured cord cassette with pre-managed slack loops takes the guess work out of the tedious and time consuming cable management tasks. The built-in patch cords are always available and are always the right length for server connections. When a server is disconnected, the built-in patch cords can be easily stored by simply pushing the patch cord back into the cord cassette.

InstaPATCH ZERO, together with InstaPATCH® Cu and InstaPATCH® 360, provide an end-to-end pre-terminated structured cabling solution that not only reduce deployment times, but increase your ability to respond to change as your data center evolves.

The InstaPATCH ZERO helps data centers:

- Save time – Modular, factory configured components enable plug and play installation – simply roll it in and plug it in to add server capacity;
- Save space – Overhead connectivity maximizes available rack space for active equipment, and pre-managed patch cord cassettes keep cord bundles neatly organized and managed, even in high density installations.
- Save Installation and maintenance cost – Pre-managed cords save labor costs associated with cable management during server deployment, decommissioning, and moves, adds and changes.
- Prepare for the future – Pre-terminated modularity and segregation of the permanent horizontal link from patch cords increase deployment efficiency over the life of your data center.

A Closer Look



Server Cabinet Integrated with Cord Cassettes

The InstaPATCH ZERO solution consists of three components:

- Server cabinet with integrated cord cassettes
- Additional cord cassette (for future growth)
- Overhead mini-rack

Server Cabinet Integrated with Cord Cassettes

Built on a unique modular 600 mm wide server cabinet equipped with pre-terminated cord cassettes that require zero (0) space in the vertical racks, InstaPATCH ZERO is a pre-terminated server cabinet solution optimized for rapid server deployment and change management. The InstaPATCH ZERO cabinet is based on the Rittal 16-fold TS8 modular frame and each cabinet can accept up to six InstaPATCH ZERO cord cassettes with built-in U/UTP and fiber patch cords. Cord cassettes are pre-installed and configured in the 0U space of a 42U 600 mm wide and 1200 mm deep server cabinet before shipping to end user sites, which provide up to 72 U/UTP ports or up to 72 U/UTP ports and 72 optical fiber duplex LC ports. Ready to adapt to changes in network design, InstaPATCH ZERO cabinet solutions can be installed, moved or decommissioned in moments.

Base Server Cabinet includes

- 42U, 600 mm W x 1200 mm D server cabinet based on Rittal TS8 modular frames
- 16-fold continuously welded steel frame delivers 30% more dimensional stability
- External access to all installation points for doors, walls and baying
- Available in sand texture black
- Fully perforated front and split-rear door with locking handles
- Castors are included (two swivel, two fixed)
- Maximum load bearing capacity – 2250 lb dynamic
- Doors can be easily removed or reversed
- Ground studs on all surfaces

Integrated Cabinet Features and Benefits

- Integrated, pre-managed connectivity accelerates server deployment by enabling data center personnel to roll it in and plug it in
- Extendable, pre-managed patch cords ensure cabling is always the right length and adequately managed to facilitate proper air flow
- Zero U connectivity maximizes available rack space for active equipment
- A total of 72 pre-terminated U/UTP cords and/or 72 optical fiber duplex LC cords can be pre-installed in server cabinets before shipped out to end user sites
- Available in 2, 4 and 6 cassette configurations to support copper or mixed copper/fiber connectivity (additional cassettes are available separately)
- Support GigaSPEED® X10D, GigaSPEED® XL and LazrSPEED® for high bandwidth applications



InstaPATCH ZERO Cord Cassette - Copper (U/UTP)



InstaPATCH ZERO Cord Cassette - Mixed Media



Overhead Mini-rack

Cord Cassettes

Cord cassettes are available in two configurations. Powered by either SYSTIMAX GigaSPEED X10D or GigaSPEED XL, the copper cord cassettes come with 12 U/UTP patch cords. The mixed media cassettes, on the other hand, contain 12 U/UTP (GigaSPEED X10D or GigaSPEED XL) and 24 OM4 fiber ruggedized fanout (for 12 LazrSPEED 550 Duplex LC connections). For initial deployment, cord cassettes are pre-installed and configured in the OU space of a 600 mm wide server cabinet. If needed, additional cord cassettes can be ordered separately and installed in the field to support the needs for increased capacity.

Features and Benefits

- Pre-managed patch cords make adding or disconnecting servers as easy as pulling out or pushing back the needed length of cord
- Provides built in patch cord management, improving air flow and reducing patch cable inventory issues
- Extendable cord bundles provide flexibility to span a range of distances, making it easier to accommodate design and equipment location changes

Overhead Mini-rack

For optimum cable management, CommScope bundles the patch cords into a trunk assembly that feeds out of the cabinet's top and connects to a 4U equipment rack that mounts to the overhead pathway. It accepts standard 19-inch patch panels and electronics and provides the transition between the permanent overhead cabling and the server cabinet.

Features and Benefits:

- Maximize rack-mount space in a cabinet for active equipment by placing patch panels or interconnect equipment above the cabinet or rack
- Accelerates deployment, decommissioning or replacement of server cabinets by segregating the connection to the permanent, horizontal link from the cabinet
- Two-post rack that mounts to overhead cable runway
- Available in 9.4 inches high, with 4U rack mounting spaces
- Accepts standard 19-inch patch panels and other 19-inch interconnect equipments
- Multiple mounting options, above, below or parallel to cable runway. The brackets can also be adjusted front, back, right or left to align with cable openings in the top of the rack or cabinet
- Compatible with multiple cable runway sizes
- An optional Vertical Cable Manager (VCM) provides a controlled pathway for patch cords into the server rack. The hinged door adds a professional, finished touch to the installation.

Physical Specifications

Material ID	Product Number	Height	Width	Depth
760157800	OVRHDRACK	9.4"	19.7"	3"
760158592	OVRHDRACKVCM	9.4"	23.5"	10.4"

Day 1 Installation: Roll in and Plug in

Deploying the InstaPATCH ZERO is simple by following a four step process:

Step 1: Install overhead mini-rack, patch panels and permanent horizontal links.

Step 2: Roll in the pre-terminated server cabinet integrated with cord cassettes.

Step 3: Connect the cassette trunks to the overhead patch panels.

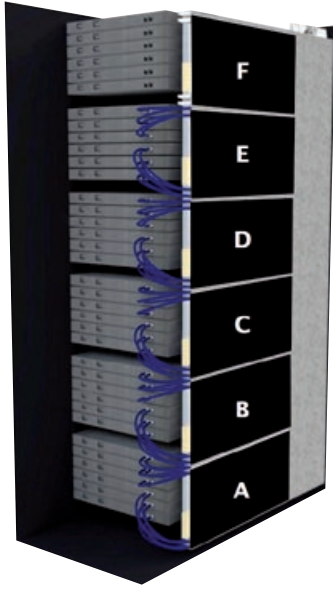
Step 4: Extend the built-in patch cords and plug them into servers.

Day 2 Expansion and Upgrades: Slide in and Plug in

As your data center's needs change, you can add server capacity by sliding additional cord cassettes into the cabinet, connecting the cassette trunks to the overhead patch panels and extending the cords to your servers. If you need to upgrade or refresh servers with virtually no downtime, you can quickly decommission and replace the cabinet without disrupting the permanent, horizontal link.

InstaPATCH ZERO Ordering Guide

The steps below have been designed to guide you to the appropriate selection for the InstaPATCH ZERO cabinet integrated with cord cassettes.



Rear view of a left position cabinet with cassette positions

Step 1: Select Cabinet Type

- 42U, 600 W 1 200 D, LEFT MOUNT
- 42U, 600 W 1 200 D, RIGHT MOUNT

* LEFT MOUNT – Cord cassette occupies the vertical OU space located on the LEFT side of the cabinet when viewed from the front of the enclosure

* RIGHT MOUNT – Cord cassette occupies the vertical OU space located on the RIGHT side of the cabinet when viewed from the front of the enclosure

Step 2: Select Cassette Media Type

- Copper only cassette (U/UTP)
 - Mixed media cassette (U/UTP + Fiber)
-

Step 3: Select Cassette Positions

- Bottom 2 positions (Position A & B)
 - Middle 2 positions (Position C & D)
 - Bottom 4 positions (Position A, B, C D)
 - All 6 positions (Position A, B, C, D, E, F)
-

Step 4: Select U/UTP Performance Level

- Category 6A
 - Category 6
-

Step 5: Select U/UTP Jacket Color

- Light Blue
 - Dark Gray
-

Please contact your local CommScope representative for availability and lead time.

Cabinet Ordering Information – Cassette Left Mount

InstaPATCH ZERO Server Cabinet - 42U 600W x 1200D Left Mount, U/UTP Only, Category 6A		
Material ID	Product Number	Detailed Description
760157917	PS42U600W1200D L2-A2110000	Left Mount, 2 Cord Cassettes, A and B Positions, Category 6A, Light Blue
760157925	PS42U600W1200D L2-A2001100	Left Mount, 2 Cord Cassettes, C and D Positions, Category 6A, Light Blue
760157933	PS42U600W1200D L4-A2111100	Left Mount, 4 Cord Cassettes, A through D Positions, Category 6A, Light Blue
760157941	PS42U600W1200D L6-A2111111	Left Mount, 6 Cord Cassettes, A through F Positions, Category 6A, Light Blue
760158071	PS42U600W1200D L2-A3110000	Left Mount, 2 Cord Cassettes, A and B Positions, Category 6A, Dark Gray
760158089	PS42U600W1200D L2-A3001100	Left Mount, 2 Cord Cassettes, C and D Positions, Category 6A, Dark Gray
760158097	PS42U600W1200D L4-A3111100	Left Mount, 4 Cord Cassettes, A through D Positions, Category 6A, Dark Gray
760158105	PS42U600W1200D L6-A3111111	Left Mount, 6 Cord Cassettes, A through F Positions, Category 6A, Dark Gray

InstaPATCH ZERO Server Cabinet - 42U 600W x 1200D Left Mount, U/UTP Only, Category 6		
Material ID	Product Number	Detailed Description
760158113	PS42U600W1200D L2-B2110000	Left Mount, 2 Cord Cassettes, A and B Positions, Category 6, Light Blue
760158121	PS42U600W1200D L2-B2001100	Left Mount, 2 Cord Cassettes, C and D Positions, Category 6, Light Blue
760158139	PS42U600W1200D L4-B2111100	Left Mount, 4 Cord Cassettes, A through D Positions, Category 6, Light Blue
760158147	PS42U600W1200D L6-B2111111	Left Mount, 6 Cord Cassettes, A through F Positions, Category 6, Light Blue
760157958	PS42U600W1200D L2-B3110000	Left Mount, 2 Cord Cassettes, A and B Positions, Category 6, Dark Gray
760157966	PS42U600W1200D L2-B3001100	Left Mount, 2 Cord Cassettes, C and D Positions, Category 6, Dark Gray
760157974	PS42U600W1200D L4-B3111100	Left Mount, 4 Cord Cassettes, A through D Positions, Category 6, Dark Gray
760157982	PS42U600W1200D L6-B3111111	Left Mount, 6 Cord Cassettes, A through F Positions, Category 6, Dark Gray

InstaPATCH ZERO Server Cabinet - 42U 600W x 1200D Left Mount, Mixed Media, Category 6A/24 OM4 Fiber Ruggedized Fanout		
Material ID	Product Number	Detailed Description
760158238	PS42U600W1200D L2-A2330000	Left Mount, 2 Cord Cassettes, A and B Positions, Category 6A, Light Blue, 24 OM4 Fiber
760158246	PS42U600W1200D L2-A2003300	Left Mount, 2 Cord Cassettes, C and D Positions, Category 6A, Light Blue, 24 OM4 Fiber
760158253	PS42U600W1200D L4-A2333300	Left Mount, 4 Cord Cassettes, A through D Positions, Category 6A, Light Blue, 24 OM4 Fiber
760158261	PS42U600W1200D L6-A2333333	Left Mount, 6 Cord Cassettes, A through F Positions, Category 6A, Light Blue, 24 OM4 Fiber
760158394	PS42U600W1200D L2-A3330000	Left Mount, 2 Cord Cassettes, A and B Positions, Category 6A, Dark Gray, 24 OM4 Fiber
760158402	PS42U600W1200D L2-A3003300	Left Mount, 2 Cord Cassettes, C and D Positions, Category 6A, Dark Gray, 24 OM4 Fiber
760158410	PS42U600W1200D L4-A3333300	Left Mount, 4 Cord Cassettes, A through D Positions, Category 6A, Dark gray, 24 OM4 Fiber
760158428	PS42U600W1200D L6-A3333333	Left Mount, 6 Cord Cassettes, A through F Positions, Category 6A, Dark Gray, 24 OM4 Fiber

InstaPATCH ZERO Server Cabinet - 42U 600W x 1200D Left Mount, Mixed Media, Category 6/24 OM4 Fiber Ruggedized Fanout		
Material ID	Product Number	Detailed Description
760158436	PS42U600W1200D L2-B2330000	Left Mount, 2 Cord Cassettes, A and B Positions, Category 6, Light Blue, 24 OM4 Fiber
760158444	PS42U600W1200D L2-B2003300	Left Mount, 2 Cord Cassettes, C and D Positions, Category 6, Light Blue, 24 OM4 Fiber
760158451	PS42U600W1200D L4-B2333300	Left Mount, 4 Cord Cassettes, A through D Positions, Category 6, Light Blue, 24 OM4 Fiber
760158469	PS42U600W1200D L6-B2333333	Left Mount, 6 Cord Cassettes, A through F Positions, Category 6, Light Blue, 24 OM4 Fiber
760158279	PS42U600W1200D L2-B3330000	Left Mount, 2 Cord Cassettes, A and B Positions, Category 6, Dark Gray, 24 OM4 Fiber
760158287	PS42U600W1200D L2-B3003300	Left Mount, 2 Cord Cassettes, C and D Positions, Category 6, Dark Gray, 24 OM4 Fiber
760158295	PS42U600W1200D L4-B3333300	Left Mount, 4 Cord Cassettes, A through D Positions, Category 6, Dark gray, 24 OM4 Fiber
760158303	PS42U600W1200D L6-B3333333	Left Mount, 6 Cord Cassettes, A through F Positions, Category 6, Dark Gray, 24 OM4 Fiber

Cabinet Ordering Information – Cassette Right Mount

InstaPATCH ZERO Server Cabinet - 42U 600W x 1200D Right Mount, U/UTP Only, Category 6A		
Material ID	Product Number	Detailed Description
760157990	PS42U600W1200D R2-A2110000	Right Mount, 2 Cord Cassettes, A and B Positions, Category 6A, Light Blue
760158006	PS42U600W1200D R2-A2001100	Right Mount, 2 Cord Cassettes, C and D Positions, Category 6A, Light Blue
760158014	PS42U600W1200D R4-A2111100	Right Mount, 4 Cord Cassettes, A through D Positions, Category 6A, Light Blue
760158022	PS42U600W1200D R6-A2111111	Right Mount, 6 Cord Cassettes, A through F Positions, Category 6A, Light Blue
760158154	PS42U600W1200D R2-A3110000	Right Mount, 2 Cord Cassettes, A and B Positions, Category 6A, Dark Gray
760158162	PS42U600W1200D R2-A3001100	Right Mount, 2 Cord Cassettes, C and D Positions, Category 6A, Dark Gray
760158170	PS42U600W1200D R4-A3111100	Right Mount, 4 Cord Cassettes, A through D Positions, Category 6A, Dark Gray
760158188	PS42U600W1200D R6-A3111111	Right Mount, 6 Cord Cassettes, A through F Positions, Category 6A, Dark Gray

InstaPATCH ZERO Server Cabinet - 42U 600W x 1200D Right Mount, U/UTP Only, Category 6		
Material ID	Product Number	Detailed Description
760158196	PS42U600W1200D R2-B2110000	Right Mount, 2 Cord Cassettes, A and B Positions, Category 6, Light Blue
760158204	PS42U600W1200D R2-B2001100	Right Mount, 2 Cord Cassettes, C and D Positions, Category 6, Light Blue
760158212	PS42U600W1200D R4-B2111100	Right Mount, 4 Cord Cassettes, A through D Positions, Category 6, Light Blue
760158220	PS42U600W1200D R6-B2111111	Right Mount, 6 Cord Cassettes, A through F Positions, Category 6, Light Blue
760158030	PS42U600W1200D R2-B3110000	Right Mount, 2 Cord Cassettes, A and B Positions, Category 6, Dark Gray
760158048	PS42U600W1200D R2-B3001100	Right Mount, 2 Cord Cassettes, C and D Positions, Category 6, Dark Gray
760158055	PS42U600W1200D R4-B3111100	Right Mount, 4 Cord Cassettes, A through D Positions, Category 6, Dark Gray
760158063	PS42U600W1200D R6-B3111111	Right Mount, 6 Cord Cassettes, A through F Positions, Category 6, Dark Gray

InstaPATCH ZERO Server Cabinet - 42U 600W x 1200D Right Mount, Mixed Media, Category 6A/24 OM4 Fiber Ruggedized Fanout		
Material ID	Product Number	Detailed Description
760158311	PS42U600W1200D R2-A2330000	Right Mount, 2 Cord Cassettes, A and B Positions, Category 6A, Light Blue, 24 OM4 Fiber
760158329	PS42U600W1200D R2-A2003300	Right Mount, 2 Cord Cassettes, C and D Positions, Category 6A, Light Blue, 24 OM4 Fiber
760158337	PS42U600W1200D R4-A2333300	Right Mount, 4 Cord Cassettes, A through D Positions, Category 6A, Light Blue, 24 OM4 Fiber
760158345	PS42U600W1200D R6-A2333333	Right Mount, 6 Cord Cassettes, A through F Positions, Category 6A, Light Blue, 24 OM4 Fiber
760158477	PS42U600W1200D R2-A3330000	Right Mount, 2 Cord Cassettes, A and B Positions, Category 6A, Dark Gray, 24 OM4 Fiber
760158485	PS42U600W1200D R2-A3003300	Right Mount, 2 Cord Cassettes, C and D Positions, Category 6A, Dark Gray, 24 OM4 Fiber
760158493	PS42U600W1200D R4-A3333300	Right Mount, 4 Cord Cassettes, A through D Positions, Category 6A, Dark Gray, 24 OM4 Fiber
760158501	PS42U600W1200D R6-A3333333	Right Mount, 6 Cord Cassettes, A through F Positions, Category 6A, Dark Gray, 24 OM4 Fiber

InstaPATCH ZERO Server Cabinet - 42U 600W x 1200D Right Mount, Mixed Media, Category 6/24 OM4 Fiber Ruggedized Fanout		
Material ID	Product Number	Detailed Description
760158519	PS42U600W1200D R2-B2330000	Right Mount, 2 Cord Cassettes, A and B Positions, Category 6, Light Blue, 24 OM4 Fiber
760158527	PS42U600W1200D R2-B2003300	Right Mount, 2 Cord Cassettes, C and D Positions, Category 6, Light Blue, 24 OM4 Fiber
760158535	PS42U600W1200D R4-B2333300	Right Mount, 4 Cord Cassettes, A through D Positions, Category 6, Light Blue, 24 OM4 Fiber
760158543	PS42U600W1200D R6-B2333333	Right Mount, 6 Cord Cassettes, A through F Positions, Category 6, Light Blue, 24 OM4 Fiber
760158352	PS42U600W1200D R2-B3330000	Right Mount, 2 Cord Cassettes, A and B Positions, Category 6, Dark Gray, 24 OM4 Fiber
760158360	PS42U600W1200D R2-B3003300	Right Mount, 2 Cord Cassettes, C and D Positions, Category 6, Dark Gray, 24 OM4 Fiber
760158378	PS42U600W1200D R4-B3333300	Right Mount, 4 Cord Cassettes, A through D Positions, Category 6, Dark Gray, 24 OM4 Fiber
760158386	PS42U600W1200D R6-B3333333	Right Mount, 6 Cord Cassettes, A through F Positions, Category 6, Dark Gray, 24 OM4 Fiber

Cord Cassette Ordering Information

Cord Cassette – Copper only, Category 6A									
Material ID	Product Number	Cord Cassette Media Type	U/UTP Cords	U/UTP Performance	U/UTP Jacket Color	U/UTP Termination	Fiber Duplex LC Cords	Fiber Jacket Color	Tail Length
ZC12A2B0000-F006	ZC12A2B0000-F006	Copper Only	12	Category 6A	Light Blue	Plug to Plug	NA	NA	6 Feet
ZC12A2B0000-F008	ZC12A2B0000-F008	Copper Only	12	Category 6A	Light Blue	Plug to Plug	NA	NA	8 Feet
ZC12A2B0000-F010	ZC12A2B0000-F010	Copper Only	12	Category 6A	Light Blue	Plug to Plug	NA	NA	10 Feet
ZC12A3B0000-F006	ZC12A3B0000-F006	Copper Only	12	Category 6A	Dark Gray	Plug to Plug	NA	NA	6 Feet
ZC12A3B0000-F008	ZC12A3B0000-F008	Copper Only	12	Category 6A	Dark Gray	Plug to Plug	NA	NA	8 Feet
ZC12A3B0000-F010	ZC12A3B0000-F010	Copper Only	12	Category 6A	Dark Gray	Plug to Plug	NA	NA	10 Feet

Cord Cassette – Copper only, Category 6									
Material ID	Product Number	Cord Cassette Media Type	U/UTP Cords	U/UTP Performance	U/UTP Jacket Color	U/UTP Termination	Fiber Duplex LC Cords	Fiber Jacket Color	Tail Length
ZC12B2B0000-F006	ZC12B2B0000-F006	Copper Only	12	Category 6	Light Blue	Plug to Plug	NA	NA	6 Feet
ZC12B2B0000-F008	ZC12B2B0000-F008	Copper Only	12	Category 6	Light Blue	Plug to Plug	NA	NA	8 Feet
ZC12B2B0000-F010	ZC12B2B0000-F010	Copper Only	12	Category 6	Light Blue	Plug to Plug	NA	NA	10 Feet
ZC12B3B0000-F006	ZC12B3B0000-F006	Copper Only	12	Category 6	Dark Gray	Plug to Plug	NA	NA	6 Feet
ZC12B3B0000-F008	ZC12B3B0000-F008	Copper Only	12	Category 6	Dark Gray	Plug to Plug	NA	NA	8 Feet
ZC12B3B0000-F010	ZC12B3B0000-F010	Copper Only	12	Category 6	Dark Gray	Plug to Plug	NA	NA	10 Feet

Cord Cassette – Mixed Media, Category 6A/24 OM4 Fiber Ruggedized Fanout									
Material ID	Product Number	Cord Cassette Media Type	U/UTP Cords	U/UTP Performance	U/UTP Jacket Color	U/UTP Termination	Fiber Duplex LC Cords	Fiber Jacket Color	Tail Length
ZC12A2B24LP-F006	ZC12A2B24LP-F006	Mixed Media	12	Category 6A	Light Blue	Plug to Plug	12	Aqua	6 Feet
ZC12A2B24LP-F008	ZC12A2B24LP-F008	Mixed Media	12	Category 6A	Light Blue	Plug to Plug	12	Aqua	8 Feet
ZC12A2B24LP-F010	ZC12A2B24LP-F010	Mixed Media	12	Category 6A	Light Blue	Plug to Plug	12	Aqua	10 Feet
ZC12A3B24LP-F006	ZC12A3B24LP-F006	Mixed Media	12	Category 6A	Dark Gray	Plug to Plug	12	Aqua	6 Feet
ZC12A3B24LP-F008	ZC12A3B24LP-F008	Mixed Media	12	Category 6A	Dark Gray	Plug to Plug	12	Aqua	8 Feet
ZC12A3B24LP-F010	ZC12A3B24LP-F010	Mixed Media	12	Category 6A	Dark Gray	Plug to Plug	12	Aqua	10 Feet

Cord Cassette – Mixed Media, Category 6/24 OM4 Fiber Ruggedized Fanout									
Material ID	Product Number	Cord Cassette Media Type	U/UTP Cords	U/UTP Performance	U/UTP Jacket Color	U/UTP Termination	Fiber Duplex LC Cords	Fiber Jacket Color	Tail Length
ZC12B2B24LP-F006	ZC12B2B24LP-F006	Mixed Media	12	Category 6	Light Blue	Plug to Plug	12	Aqua	6 Feet
ZC12B2B24LP-F008	ZC12B2B24LP-F008	Mixed Media	12	Category 6	Light Blue	Plug to Plug	12	Aqua	8 Feet
ZC12B2B24LP-F010	ZC12B2B24LP-F010	Mixed Media	12	Category 6	Light Blue	Plug to Plug	12	Aqua	10 Feet
ZC12B3B24LP-F006	ZC12B3B24LP-F006	Mixed Media	12	Category 6	Dark Gray	Plug to Plug	12	Aqua	6 Feet
ZC12B3B24LP-F008	ZC12B3B24LP-F008	Mixed Media	12	Category 6	Dark Gray	Plug to Plug	12	Aqua	8 Feet
ZC12B3B24LP-F010	ZC12B3B24LP-F010	Mixed Media	12	Category 6	Dark Gray	Plug to Plug	12	Aqua	10 Feet

Overhead Mini Rack Ordering Information

Material ID	Product Number	Detailed Description
760157800	OVRHDRACK	Overhead Mini Rack, 19 inch, 4U
760158592	OVRHDRACKVCM	Overhead Mini Rack, 19 inch, 4U with Vertical Cable Manager

The accessories listed below are available for the cabinet. Additional ordering information can be located in eCatalog under the Enclosures section.

- Sidewalls
- Door mount server fan panel
- Baying Kits
- Tool-less blanking panels
- Tool-less shelves
- PDU and universal mounting bracket
- Bolt Down Kits

COMMSCOPE®



www.commscope.com

Visit our Web site or contact your local CommScope representative for more information.

© 2011 CommScope, Inc. All rights reserved.

All trademarks identified by ® or ™ are registered trademarks or trademarks, respectively, of CommScope, Inc.

This document is for planning purposes only and is not intended to modify or supplement any specifications or warranties relating to CommScope products or services.

07/11