

SYSTIMAX®

SOLUTIONS

State-of-the-Art Cabling for Enidata

Eni Group choose SYSTIMAX® Structured Connectivity Solutions to equip new center

SYSTIMAX® Structured Connectivity Solutions (SCS) have been used to convert the former Milan research facility of Eni Group's oil and gas operations into one of the most advanced office complexes in Europe. The seven buildings that form the 13,000m² office complex were recabled as a new center for Enidata, the Eni Group's company that provides computer services for all members of the group. The Eni Group outsources all its telecommunication requirements to leading Italian telecom company, Albacom, which works closely with Enidata to specify the system and select suppliers.

After considering the alternatives, Albacom and Enidata chose the SYSTIMAX GigaSPEED® Solution. This can support Gigabit Ethernet over compact, easily installed copper cabling that is flexible and simple to manage. The SYSTIMAX OptiSPEED® Solution was selected to provide high performance multimode fiber backbone connections from patch panels to the main communications room. In addition to practical high performance cabling, SYSTIMAX SCS was also able to offer the product quality and certified installation that Enidata wanted.

During the project, there were some special challenges, including a high concentration of workplaces and limited space inside the buildings. The complex now houses more than 950 people, including 200 consultants. To provide cost effective, high performance voice, data and multimedia connections for this workforce, the company decided to use UTP structured cabling.

The Milan office complex includes buildings of different sizes and layouts. Three of the seven are in an "L" form, on three floors. In these, cabling is routed above the ceiling and connecting to floor outlets through PVC ducts. A fourth building has a linear plan and is built on four floors. Here, the horizontal cable runs are under raised floors while backbones run under the building's corridors. The OptiSPEED backbones are linked to wall mounted patch panels from which horizontal runs are connected to outlets at the desk. On the ground floor, existing metal ducting was re-used for the new wiring.

A fifth, smaller, building has a similar cable layout. In the final two buildings, which have two floors on a "T" plan, data and voice cables run under raised floors. Again backbones run under the corridors with wall-mounted distribution hardware.

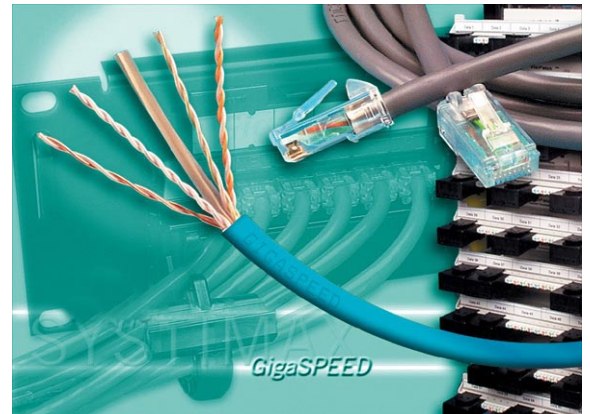
SYSTIMAX® Structured Connectivity Solutions

To install the cabling, Albacom chose Alpitel, a SYSTIMAX BusinessPartner that has worked in the networking sector since 1990. Alpitel handled the entire installation, providing eight certified technicians to plan and install the cabling. Its expertise and service was a key factor in the successful collaboration with the buyer.

Alpitel's planning for the new network infrastructure included location of patch panels and layout of outlets to give an average of one for each 9 square meters of office space. After removing existing coaxial and four-pair UTP cables, Alpitel installed new Low Smoke Zero Halogen GigaSPEED cabling.

The existing central telecommunications room was retained. This is the primary point of connection for external telephone networks and leased line together with the associated switchboards.

The telecommunications room is now the point of departure for the new fiber-optic backbone of the data network, linking communications rooms throughout the buildings. For network resilience, the two cable runs connecting with the closets take alternative routes through the buildings.



Throughout the building, Alpitel installed more than 1,350 triple RJ45 outlets. These are connected via communications closets with 24-port rack mounted SYSTIMAX PATCHMAX® RJ45 patch panels. The closets also contain the active LAN switches and other hardware. "This was a complex installation where high performance had to be combined with reliability and ease of management," said Giampiero Sforte, Business Development Manager, SYSTIMAX® Solutions, Italy. "Alpitel is one of Italy's top network infrastructure providers and, with SYSTIMAX SCS and guarantees, they were able to meet all Eni Data's needs and back this up with 20-year warranties and application assurances."

SYSTIMAX® SOLUTIONS

© 2004 CommScope, Inc.
All rights reserved.

Visit our Web site at www.systimax.com or contact your local SYSTIMAX Solutions representative or SYSTIMAX BusinessPartner for more information. SYSTIMAX Solutions is a trademark of CommScope. All trademarks identified by ® or ™ are registered trademarks or trademarks, respectively, of CommScope.

This document is for planning purposes only and is not intended to modify or supplement any specifications or warranties relating to SYSTIMAX Solutions products or services.