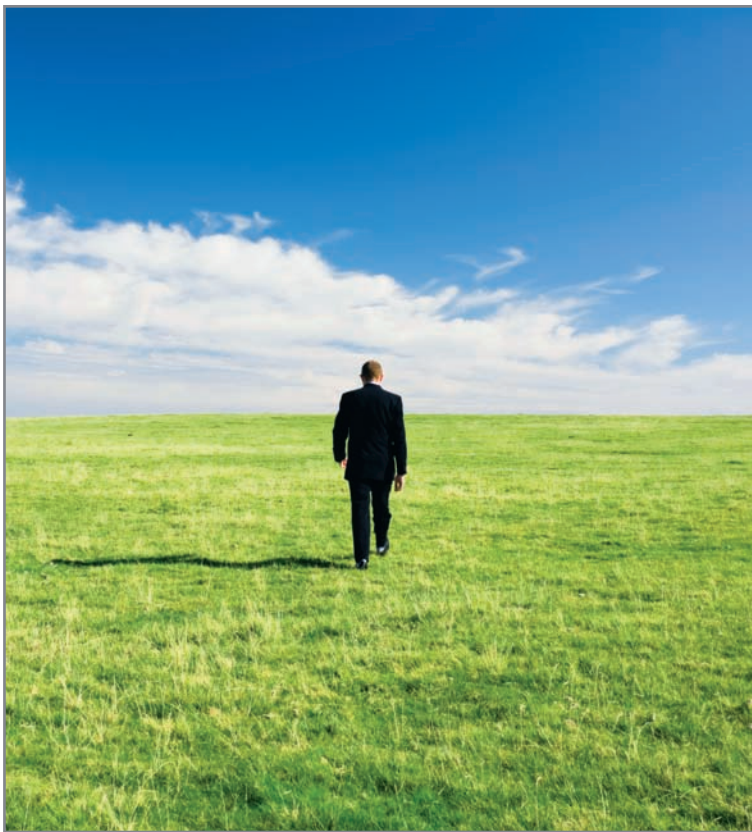


Environmental Responsibility

CommScope is committed to reducing its impact on the environment while providing intelligent, advanced and high-performing network infrastructure solutions.



Leading the Way to Your Greener Network Infrastructure

For business and technology reasons alone, network infrastructure solutions from CommScope Enterprise Solutions are among the world's best. But when you consider that CommScope can help you minimize your energy consumption, energy costs and long-term waste, it's clear that CommScope also is one of the greenest options for the network infrastructure physical layer.

For starters, CommScope solutions are built to outlast at least five generations of network equipment. Compared to less reliable products, that durability adds up to an enormous reduction in waste over the lifespan of your infrastructure. Also, with CommScope's integrated solutions, you only need one network for your entire building's systems. This lowers your energy consumption, reduces your demand for additional IT equipment and simplifies your IT management.

CommScope Enterprise and Broadband cables fully comply with the European Union's RoHS restrictions, assuring customers that our products have met EU health standards for materials in electrical and electronic equipment.

Also, CommScope's successful ReelSmart™ reel-recycling program has been tremendously beneficial to the environment. By grinding up previously-used wooden reels and pallets and combining the wood scraps with recycled plastic for new composite reels, the ReelSmart program has saved millions of pounds of wood from landfills and saved thousands of trees from destruction. Since its inception in 1988, the ReelSmart program has won two awards for excellence in waste reduction and reduced the costs associated with producing entirely new reels.

Making Tremendous Advances Every Day

Having initiated a recycling program in the 1980s and a formal Energy Conservation Team in 2001, CommScope Enterprise Solutions recognized the importance of green operations long before being green was fashionable. Since then, CommScope has transformed the day-to-day operations across our entire corporation.

Today, CommScope is one of only three IT companies that voluntarily report their greenhouse gas emissions to the U.S. Department of Energy. By 2006, our U.S. facilities collectively reduced their emissions by 3.5 percent, and this is only the beginning of the continual improvements to which we've committed.

At five manufacturing locations around the world, CommScope has earned ISO 14001-2004 Certification. This standard distinguishes a system of practices that minimize impact and analyzes our programs for recycling, waste reduction, chemical management, waste disposal, emissions and others. Maintaining this certification requires us to show continual improvement, a challenge we work toward every day.

In addition to our successful ReelSmart reel-recycling program, CommScope reclaims millions of pounds of metals, plastics and paper every year from our processes. We sell these materials to recyclers who return them to usable products and sell them to other companies for their use. This not only saves room in landfills but also mitigates the energy consumption associated with manufacturing new products from raw materials.

Our recycling efforts don't stop there. At our Catawba, North Carolina facility, the world's largest coaxial cable manufacturing plant, we reduce massive quantities of wastewater by reusing the water in our production process.



© 2008 CommScope, Inc. All rights reserved.

Visit our website at www.commscope.com or contact your local CommScope representative or BusinessPartner for more information. All trademarks identified by ® or ™ are registered trademarks or trademarks, respectively, of CommScope.

11/08 MI-112



Improving Your Carbon Footprint and Your Profitability

Reusing your network infrastructure is green. Replacing it is not. CommScope's network infrastructure is designed to last through multiple generations of network equipment. That means that you can reuse CommScope's physical layer solutions many times over, even as you replace your network equipment. Compared to replacement, this alone can cut the carbon footprint significantly, and it keeps infrastructure costs at less than 5 percent of total, long-term IT operations.

Also, most buildings have an average of 15 low-voltage systems running over separate cabling systems. But now, during new construction, you can integrate them onto one CommScope intelligent infrastructure. Operating an integrated CommScope infrastructure, you'll reduce energy consumption and save the resources that otherwise would be required to produce redundant cabling and hardware. With IP-enabled automation systems on one infrastructure, your building will be wired for life.

Traditionally, data centers suffer from terribly inefficient climate control, with more than half of cooling wasted due to poor airflow. CommScope's network infrastructure physical layer solutions' structured design promotes better airflow for more efficient energy usage and more optimal operating temperatures. In other words, CommScope structured solutions are good for the life of your IT resources and for life on Earth.

Looking Ahead to a Cleaner, Cooler Planet

At CommScope, we've diminished our environmental impact, and we've still got work to do. As we progress into the future, we will embrace emerging technologies and processes in order to further shrink our ecological footprint, even while continuing our global leadership in IT solutions. From the production of our products to the operations of our facilities to the ways in which we help our customers "green up" their businesses, CommScope remains committed to environmental stewardship. It's one of our longtime fundamental values, and you can rest assured that it will remain so.