

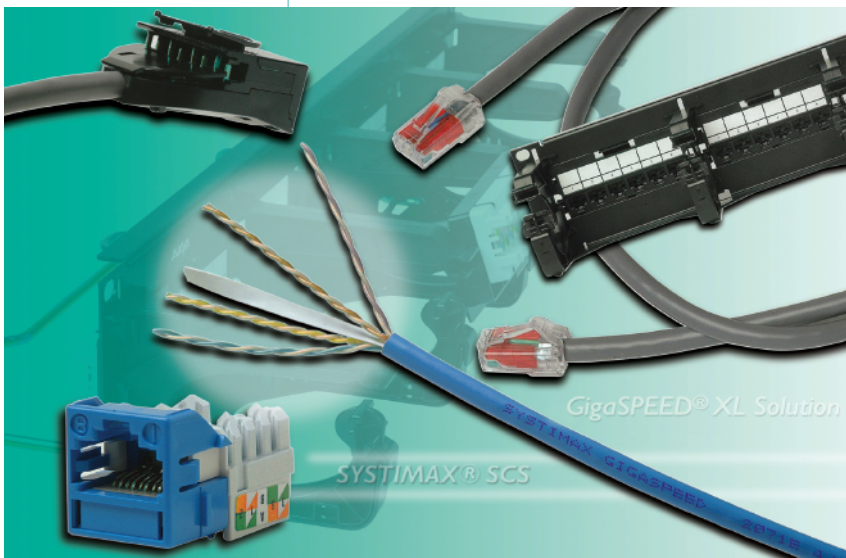
SYSTIMAX®

SOLUTIONS

Information Flows Faster at Brabant Water with SYSTIMAX® Structured Connectivity Solutions

Dutch water supply company chooses SYSTIMAX® GigaSPEED® XL and LazrSPEED® cabling solutions to build fast, responsive systems

Brabant Water supplies more than 2.2 million residents of the Netherlands' Noord-Brabant province with 175 million cubic meters of water annually. To do this, its 700 employees are operating from a headquarters building, five district offices and 34 pumping stations connected to households by 16,500 kilometers of main waterpipes.



Alongside this network of purification and distribution facilities the company also runs an advanced IT infrastructure. With 900,000 households and business customers to serve, it needs powerful systems and fast data network connections that ensure employees always have the information they need. To provide the high performance cabling this demands, Brabant Water chose SYSTIMAX® GigaSPEED® XL copper and LazrSPEED® fiber solutions.

The team planning the network infrastructure for the company's prestigious new eight-story headquarters in the city of Hertogenbosch was lead by its Information Technology (IT) Manager, Mr. A. van de Weijenberg. Their priority in selecting cabling was to find a system with performance and reliability high enough to meet their needs into the future.

"We looked for the solution with the best price/performance both in the short and long term," said A. van de Weijenberg. "It had to offer enough throughput and bandwidth to support any system we are likely to install in the foreseeable future and beyond.

SYSTIMAX® Structured Connectivity Solutions

“In a business like Brabant Water with almost two million customers, it is important to have responsive systems that are not slowed by network traffic peaks. In years to come this will be even more vital, so we rejected low cost cabling in favor of UTP copper and multimode fiber with the best performances in their class.”

At its previous headquarters, Brabant Water used Category 5 SYSTIMAX cabling. However, for the new building it wanted performance that exceeds Category 6 standards combined with industry-leading reliability and guarantees.

To provide this, more than 150 km of GigaSPEED XL copper cabling is now installed in the new HQ, connecting its communications rooms with nearly 3,000 information outlets. Designed using advanced modeling tools and testing techniques developed at SYSTIMAX Labs, the GigaSPEED XL Solution has performance above the Category 6 cabling standard. It can, for instance, support Gigabit Ethernet across channels with six connectors, even under most adverse conditions such as the presence of electromagnetic noise.

The LazrSPEED multimode optical fiber cabling used in the network's backbones supports Gigabit Ethernet connections between communications rooms and the main equipment room on the fifth floor. With its laser-optimized design, LazrSPEED fiber can also support 10 Gb/s transmission over distances up to 550 meters, without the need for complex singlemode electronics.

“ We looked for the solution with the best price/performance both in the short and long term ”

A. van de Weijenberg, IT Manager

In the communications rooms, located on the building's first, fourth and seventh floors, GigaSPEED XL cabling is connected via SYSTIMAX 110 VisiPatch™ patching hardware. This innovative system avoids the “patch cord spaghetti” that obscures connections on conventional patch panels. Its reverse connector design allows cords to be routed towards the back of the panel, leaving the area in front of the connectors clear. As a result it is easy to see connector labels, making re-patching quicker, easier and less prone to error.

The new cabling, which handles both data and telephone connections, was installed by a SYSTIMAX BusinessPartner. This company also designed the cabling system in cooperation with SYSTIMAX distributor Anixter who handled delivery logistics. During fit-out of the new building, close cooperation between these two companies resulted in the work being completed efficiently and on schedule.

“ We believe the low downtime combined with time savings of the SYSTIMAX portfolio will make the installation far easier and less expensive to maintain than the alternatives ”

Frits Kuus, Sales Director, SYSTIMAX Solutions, The Netherlands

The GigaSPEED XL cabling has been laid in cable trays above the ceilings and through ducts along the walls of the building. Throughout the work areas, twin information outlets connected by the cabling are mounted in pairs either in floor boxes, on the walls or in the ceiling.

The LazrSPEED fiber data backbones are routed through riser shafts and cable trays, alongside 100-pair SYSTIMAX telephone cables, to the satellite communications rooms. In the main equipment room, both copper and fiber cables run under a raised floor.

When completed, the installation was certified by SYSTIMAX® Solutions to receive the SYSTIMAX SCS 20-year guarantee and application assurances. Backed by extensive test programs at SYSTIMAX Labs, these guarantees and assurances cover both existing and future networking applications that conform to international standards.

Currently, horizontal copper connections from the communications rooms to outlets operate at 100 Mb/s and backbone connections at 1 Gb/s. However, these speeds can be increased tenfold in the future without any cabling changes.

Commenting on the installation, Frits Kuus, Sales Director, SYSTIMAX Solutions™, The Netherlands said: “We believe SYSTIMAX Solutions offered the best value to Brabant since mix and match cabling could not match the quality or guarantee the performance required. Added to this, low price solutions would probably work out to be more expensive because of higher downtime, additional running costs and the expense of having to upgrade sooner. We believe the low downtime combined with time savings of the SYSTIMAX portfolio will make the installation far easier and less expensive to maintain than the alternatives.”

SYSTIMAX® SOLUTIONS

© 2004 CommScope, Inc.
All rights reserved.

Visit our Web site at www.systemax.com or contact your local SYSTIMAX Solutions representative or SYSTIMAX BusinessPartner for more information. SYSTIMAX Solutions is a trademark of CommScope. All trademarks identified by ® or ™ are registered trademarks or trademarks, respectively, of CommScope.

This document is for planning purposes only and is not intended to modify or supplement any specifications or warranties relating to SYSTIMAX Solutions products or services.