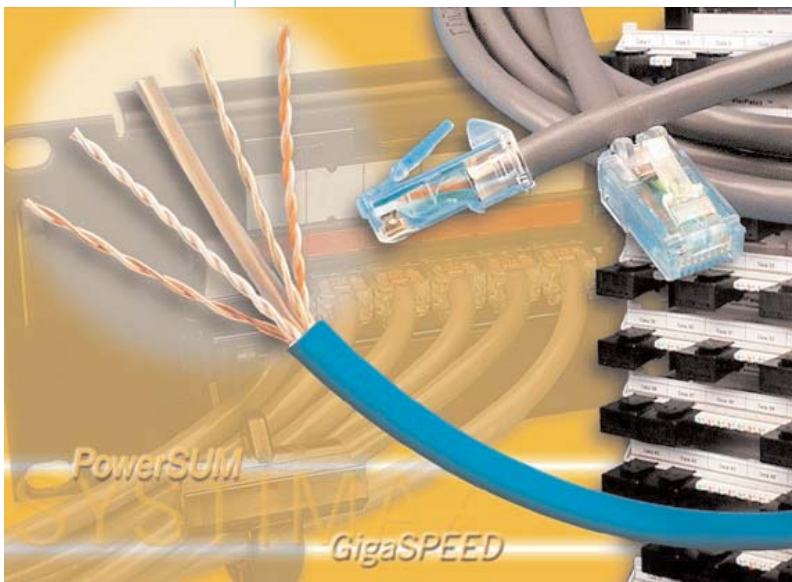


SYSTIMAX®

SOLUTIONS

Insinger de Beaufort Expands with SYSTIMAX® Structured Connectivity Solutions

Jersey-based trust company re-cables its extended office facility for ease of management and reliability



When Insinger de Beaufort Trust (Jersey) Limited leased another floor in its St Helier office building, it decided to upgrade its network infrastructure at the same time. Relocation of its communications suite to another floor provided an opportunity to re-cable the 2,150m² workspace to the highest standard and increase network outlets to 1,080.

To do this, the customer chose the SYSTIMAX® GigaSPEED® Solution with Low Smoke Zero Halogen (LSZH) cable. This was complemented by

12-core OptiSPEED® fiber cable for high-speed connections within its new communications suite. In total, nearly 65Km of the UTP copper GigaSPEED cable was used together with 220 meters of fiber cable.

"We aimed to ensure our expanded facilities had the best possible network infrastructure," said Steve Cabot, IT manager, Insinger de Beaufort Trust. "We wanted a system we could trust that would be inexpensive to operate and simple to extend if required to support further growth."

For the installation work and on-going support, Insinger de Beaufort chose Jersey Telecom, a SYSTIMAX Prestige System Integrator. During installation, SYSTIMAX distributor, Anixter, handled logistics and ensured the required cabling products were delivered when and where required.

The installation posed some special challenges for Jersey Telecom since the offices were in continual operation during the three month project, requiring noise and disruption to be minimized during working hours. Work also had to be carefully phased so that Insinger de Beaufort's 160 employees could relocate smoothly between different floors. During this process, both the old and new communications suites were in operation.

“ We aimed to ensure our expanded facilities had the best possible network infrastructure. We wanted a system we could trust that would be inexpensive to operate and simple to extend if required to support further growth. ”

Steve Cabot, IT Manager, Insinger de Beaufort Trust

GigaSPEED cabling is used both in horizontal connections where it runs in under-floor baskets and in the risers where it is routed in cable trays. Extra fiber and copper cabling was installed also in the new communications suite in readiness for an additional backbone switch that may be required in the future. Patching hardware in the new communications suite is the easy-to-manage SYSTIMAX 1100 system with RJ45 connectors.

Currently, this infrastructure serves applications including data communication, Internet access and video conferencing. As it expands, the firm can quickly extend its structured cabling without excessive costs. The cabling also has sufficient performance to support all foreseeable applications and its 20-year Extended Warranty and Application assurances guarantee that it will continue to meet specifications.

"With SYSTIMAX Structured Connectivity Solutions we are confident that our infrastructure will reliably meet all our needs for many years to come," said Cabot.

SYSTIMAX[®]

SOLUTIONS

© 2004 CommScope, Inc.
All rights reserved.

Visit our Web site at www.systemax.com or contact your local SYSTIMAX Solutions representative or SYSTIMAX BusinessPartner for more information. SYSTIMAX Solutions is a trademark of CommScope. All trademarks identified by © or ™ are registered trademarks or trademarks, respectively, of CommScope.

This document is for planning purposes only and is not intended to modify or supplement any specifications or warranties relating to SYSTIMAX Solutions products or services.